

Notifiable Diseases and Mortality Tables

TABLE I. Provisional cases of infrequently reported notifiable diseases (<1,000 cases reported during the preceding year) — United States, week ending April 20, 2013 (16th week)*

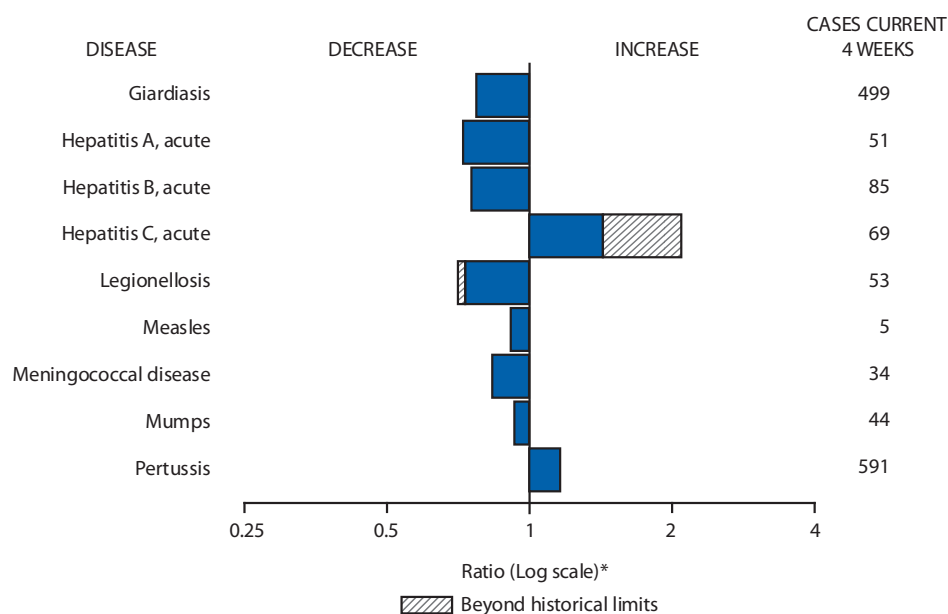
Disease	Current week	Cum 2013	5-year weekly average [†]	Total cases reported for previous years					States reporting cases during current week (No.)
				2012	2011	2010	2009	2008	
Anthrax	—	—	—	—	1	—	1	—	
Arboviral diseases ^{§, ¶} :									
California serogroup virus disease	—	—	0	78	137	75	55	62	
Eastern equine encephalitis virus disease	—	2	—	15	4	10	4	4	
Powassan virus disease	—	—	0	7	16	8	6	2	
St. Louis encephalitis virus disease	—	1	0	3	6	10	12	13	
Western equine encephalitis virus disease	—	—	—	—	—	—	—	—	
Babesiosis	—	14	3	866	1,128	NN	NN	NN	
Botulism, total	—	25	3	123	153	112	118	145	
foodborne	—	—	0	22	24	7	10	17	
infant	—	20	2	83	97	80	83	109	
other (wound and unspecified)	—	5	0	18	32	25	25	19	
Brucellosis	3	17	3	120	79	115	115	80	NY (1), FL (1), CA (1)
Chancroid	—	5	1	22	8	24	28	25	
Cholera	—	1	0	6	40	13	10	5	
Cyclosporiasis [§]	—	7	1	123	151	179	141	139	
Diphtheria	—	—	—	1	—	—	—	—	
<i>Haemophilus influenzae</i> ,** invasive disease (age <5 yrs):									
serotype b	—	8	0	23	14	23	35	30	
nonsertotype b	1	45	4	171	145	200	236	244	NY (1)
unknown serotype	2	78	4	251	226	223	178	163	FL (1), AK (1)
Hansen disease [§]	1	6	2	77	82	98	103	80	NYC (1)
Hantavirus pulmonary syndrome [§]	—	1	0	26	23	20	20	18	
Hemolytic uremic syndrome, postdiarrheal [§]	—	31	3	220	290	266	242	330	
Influenza-associated pediatric mortality ^{§, ††}	5	113	2	52	118	61	358	90	NY (1), KY (1), LA (1), TX (1), HI (1)
Listeriosis	2	95	11	678	870	821	851	759	PA (2)
Measles ^{§§}	—	26	4	54	220	63	71	140	
Meningococcal disease, invasive ^{¶¶} :									
A, C, Y, and W-135	1	36	6	141	257	280	301	330	WA (1)
serogroup B	2	25	3	94	159	135	174	188	TX (1), WA (1)
other serogroup	—	4	0	18	20	12	23	38	
unknown serogroup	9	140	9	294	323	406	482	616	NY (1), NYC (1), PA (1), DE (1), VA (1), FL (2), LA (1), ID (1)
Novel influenza A virus infections ^{***}	—	—	123	313	14	4	43,774	2	
Plague	—	—	0	3	3	2	8	3	
Poliomyelitis, paralytic	—	—	—	—	—	—	1	—	
Polio virus infection, nonparalytic [§]	—	—	—	—	—	—	—	—	
Psittacosis [§]	—	—	0	2	2	4	9	8	
Q fever, total [§]	1	16	3	134	134	131	113	120	
acute	1	11	2	112	110	106	93	106	CA (1)
chronic	—	5	0	22	24	25	20	14	
Rabies, human	—	—	0	1	6	2	4	2	
Rubella ^{†††}	—	3	0	9	4	5	3	16	
Rubella, congenital syndrome	—	—	—	2	—	—	2	—	
SARS-CoV [§]	—	—	—	—	—	—	—	—	
Smallpox [§]	—	—	—	—	—	—	—	—	
Streptococcal toxic-shock syndrome [§]	2	38	4	127	168	142	161	157	NY (1), MI (1)
Syphilis, congenital (age <1 yr) ^{§§§}	—	28	6	289	360	377	423	431	
Tetanus	—	6	1	36	36	26	18	19	
Toxic-shock syndrome (staphylococcal) [§]	2	19	1	66	78	82	74	71	PA (1), MI (1)
Trichinellosis	1	11	0	19	15	7	13	39	NY (1)
Tularemia	—	6	2	164	166	124	93	123	
Typhoid fever	1	63	7	324	390	467	397	449	VA (1)
Vancomycin-intermediate <i>Staphylococcus aureus</i> [§]	2	21	2	123	82	91	78	63	OH (1), MI (1)
Vancomycin-resistant <i>Staphylococcus aureus</i> [§]	—	—	—	1	—	2	1	—	
Vibriosis (noncholera <i>Vibrio</i> species infections) [§]	4	75	9	974	832	846	789	588	MD (1), FL (3)
Viral hemorrhagic fever ^{¶¶¶}	—	—	—	—	—	1	NN	NN	
Yellow fever	—	—	—	—	—	—	—	—	

See Table 1 footnotes on next page.

TABLE I. (Continued) Provisional cases of infrequently reported notifiable diseases (<1,000 cases reported during the preceding year) — United States, week ending April 20, 2013 (16th week)*

—: No reported cases. N: Not reportable. NN: Not Nationally Notifiable. Cum: Cumulative year-to-date counts.
 * Case counts for reporting year 2012 and 2013 are provisional and subject to change. For further information on interpretation of these data, see <http://www.cdc.gov/nndss/document/ProvisionalNationalNotifiableDiseasesSurveillanceData20100927.pdf>.
 † Calculated by summing the incidence counts for the current week, the 2 weeks preceding the current week, and the 2 weeks following the current week, for a total of 5 preceding years. The total sum of incident cases is then divided by 25 weeks. Additional information is available at <http://www.cdc.gov/nndss/document/5yearweeklyaverage.pdf>.
 ‡ Not reportable in all states. Data from states where the condition is not reportable are excluded from this table except starting in 2007 for the arboviral diseases, STD data, TB data, and influenza-associated pediatric mortality, and in 2003 for SARS-CoV. Reporting exceptions are available at http://www.cdc.gov/nndss/document/SRCA_FINAL_REPORT_2006-2010.xlsx.
 ¶ Includes both neuroinvasive and nonneuroinvasive. Updated weekly from reports to the Division of Vector-Borne Infectious Diseases, National Center for Zoonotic, Vector-Borne, and Enteric Diseases (ArboNET Surveillance). Data for West Nile virus are available in Table II.
 ** Data for *H. influenzae* (all ages, all serotypes) are available in Table II.
 †† Updated weekly from reports to the Influenza Division, National Center for Immunization and Respiratory Diseases. Since September 30, 2012, 131 influenza-associated pediatric deaths occurring during the 2012-13 influenza season have been reported.
 ‡‡ No measles cases were reported for the current week.
 ¶¶ Data for meningococcal disease (all serogroups) are available in Table II.
 *** CDC discontinued reporting of individual confirmed and probable cases of 2009 pandemic influenza A (H1N1) virus infections on July 24, 2009. During 2009, four cases of human infection with novel influenza A viruses, different from the 2009 pandemic influenza A (H1N1) strain, were reported to CDC. The four cases of novel influenza A virus infection reported to CDC during 2010, the fourteen cases reported during 2011, and the 313 cases reported in 2012 are different from the 2009 pandemic influenza A (H1N1) virus. Total case counts are provided by the Influenza Division, National Center for Immunization and Respiratory Diseases (NCIRD).
 ††† No rubella cases were reported for the current week.
 ‡‡‡ Updated weekly from reports to the Division of STD Prevention, National Center for HIV/AIDS, Viral Hepatitis, STD, and TB Prevention.
 ¶¶¶ There were no cases of viral hemorrhagic fever reported during the current week. See Table II for dengue hemorrhagic fever.

FIGURE I. Selected notifiable disease reports, United States, comparison of provisional 4-week totals April 20, 2013, with historical data



* Ratio of current 4-week total to mean of 15 4-week totals (from previous, comparable, and subsequent 4-week periods for the past 5 years). The point where the hatched area begins is based on the mean and two standard deviations of these 4-week totals.

Notifiable Disease Data Team and 122 Cities Mortality Data Team
 Jeffrey Kriseman
 Deborah A. Adams Willie J. Anderson
 Lenee Blanton Rosaline Dhara
 Diana Harris Onweh Alan W. Schley
 Pearl C. Sharp

Morbidity and Mortality Weekly Report

TABLE II. Provisional cases of selected notifiable diseases, United States, weeks ending April 20, 2013, and April 21, 2012 (16th week)*

Reporting area	<i>Chlamydia trachomatis</i> infection					Coccidioidomycosis					Cryptosporidiosis				
	Current week	Previous 52 weeks		Cum 2013	Cum 2012	Current week	Previous 52 weeks		Cum 2013	Cum 2012	Current week	Previous 52 weeks		Cum 2013	Cum 2012
		Med	Max				Med	Max				Med	Max		
United States	11,370	26,716	30,789	374,586	436,637	70	228	439	1,841	6,234	46	112	288	1,277	1,831
New England	121	953	1,340	13,199	14,701	—	0	1	1	1	—	7	19	46	84
Connecticut	—	247	560	2,983	3,782	N	0	0	N	N	—	1	3	4	10
Maine	—	64	102	809	1,044	N	0	0	N	N	—	1	4	6	14
Massachusetts	—	470	706	6,673	6,889	—	0	0	—	—	—	2	8	25	39
New Hampshire	5	58	83	787	1,012	—	0	1	1	—	—	1	4	4	11
Rhode Island	99	82	160	1,364	1,555	—	0	0	—	1	—	0	3	1	2
Vermont	17	34	110	583	419	N	0	0	N	N	—	1	6	6	8
Mid. Atlantic	1,818	3,479	4,502	51,642	56,286	—	0	1	—	3	9	12	40	126	181
New Jersey	187	539	647	8,193	8,729	N	0	0	N	N	—	0	4	6	10
New York (Upstate)	748	725	1,917	10,823	10,794	N	0	0	N	N	4	3	16	32	28
New York City	—	1,143	1,278	13,494	19,340	N	0	0	N	N	—	1	8	11	31
Pennsylvania	883	1,059	1,992	19,132	17,423	—	0	1	—	3	5	6	20	77	112
E.N. Central	1,459	4,327	4,774	53,949	69,028	—	1	4	7	15	13	27	110	280	487
Illinois	22	1,296	1,507	11,703	21,516	N	0	0	N	N	—	3	8	18	51
Indiana	208	572	838	8,016	8,912	N	0	0	N	N	—	2	8	25	60
Michigan	587	910	1,303	12,787	14,634	—	0	2	3	8	2	5	40	53	86
Ohio	350	1,046	1,207	14,360	16,476	—	0	2	2	6	7	9	28	99	163
Wisconsin	292	467	553	7,083	7,490	—	0	1	2	1	4	8	43	85	127
W.N. Central	271	1,551	1,799	19,752	25,758	—	1	8	3	36	—	16	42	152	222
Iowa	19	210	255	2,833	3,689	N	0	0	N	N	—	4	22	37	75
Kansas	32	212	256	2,960	3,608	N	0	0	N	N	—	2	6	21	38
Minnesota	7	342	436	3,244	5,426	—	1	7	2	32	—	0	0	—	—
Missouri	194	542	657	7,764	8,729	—	0	1	1	3	—	4	12	44	44
Nebraska	—	119	186	1,115	2,204	—	0	0	—	1	—	2	10	14	19
North Dakota	1	50	73	678	867	—	0	0	—	—	—	0	3	6	10
South Dakota	18	76	109	1,158	1,235	N	0	0	N	N	—	2	6	30	36
S. Atlantic	2,829	5,266	6,539	75,838	88,821	—	0	1	1	2	7	19	54	285	372
Delaware	69	92	322	1,754	1,144	—	0	1	—	—	—	0	2	2	6
District of Columbia	—	132	283	2,168	2,128	—	0	0	—	—	N	0	0	N	N
Florida	966	1,524	1,775	23,558	24,383	N	0	0	N	N	4	8	24	87	135
Georgia	760	959	1,246	13,850	17,845	N	0	0	N	N	—	5	14	75	92
Maryland	—	458	1,211	5,141	6,394	—	0	1	1	2	3	1	5	17	33
North Carolina	—	804	1,771	8,654	15,038	N	0	0	N	N	—	0	28	44	35
South Carolina	483	527	905	8,523	8,899	N	0	0	N	N	—	1	4	23	24
Virginia	437	655	1,018	10,671	11,495	N	0	0	N	N	—	2	7	33	43
West Virginia	114	90	149	1,519	1,495	N	0	0	N	N	—	0	3	4	4
E.S. Central	1,252	1,931	2,559	27,288	32,821	—	0	0	—	—	1	4	14	63	79
Alabama	411	566	862	8,598	9,319	N	0	0	N	N	—	2	6	30	31
Kentucky	268	331	787	5,200	5,044	N	0	0	N	N	1	1	4	11	12
Mississippi	360	375	765	6,041	7,899	N	0	0	N	N	—	0	4	10	12
Tennessee	213	608	735	7,449	10,559	N	0	0	N	N	—	1	5	12	24
W.S. Central	1,108	3,492	5,739	51,815	51,877	—	0	1	2	—	4	10	42	118	111
Arkansas	249	329	394	5,116	5,305	N	0	0	N	N	—	1	5	5	10
Louisiana	546	494	2,017	4,682	4,117	—	0	1	2	—	—	3	7	46	24
Oklahoma	313	109	2,373	5,784	3,646	N	0	0	N	N	2	1	13	18	22
Texas	—	2,473	3,709	36,233	38,809	N	0	0	N	N	2	5	27	49	55
Mountain	805	1,660	1,981	19,732	28,517	57	166	360	1,266	4,544	3	12	48	85	145
Arizona	—	529	769	969	9,738	57	161	356	1,240	4,463	—	1	4	8	7
Colorado	355	413	582	6,356	6,896	N	0	0	N	N	—	1	7	5	20
Idaho	90	86	198	1,592	1,450	N	0	0	N	N	2	3	25	24	25
Montana	36	1	92	1,087	1	—	0	1	—	1	1	1	4	10	24
Nevada	169	217	325	3,316	3,490	—	1	6	12	39	—	0	2	4	4
New Mexico	138	219	459	4,101	3,844	—	0	3	7	20	—	1	4	7	35
Utah	17	146	182	1,945	2,516	—	1	4	6	19	—	2	22	26	21
Wyoming	—	37	67	366	582	—	0	1	1	2	—	0	4	1	9
Pacific	1,707	4,170	5,183	61,371	68,828	13	65	89	561	1,633	9	11	27	122	150
Alaska	47	104	149	1,709	1,789	N	0	0	N	N	—	0	1	—	—
California	1,027	3,206	4,192	46,619	53,054	13	65	89	560	1,632	3	6	14	63	70
Hawaii	—	123	152	1,345	1,888	N	0	0	N	N	—	0	1	—	1
Oregon	283	259	377	4,295	4,560	—	0	1	1	1	3	3	11	40	68
Washington	350	472	632	7,403	7,537	—	0	0	—	—	3	1	22	19	11
Territories															
American Samoa	—	12	59	—	—	N	0	0	N	N	N	0	0	N	N
C.N.M.I.	—	—	—	—	—	—	—	—	—	—	—	—	—	—	—
Guam	—	—	—	—	—	—	—	—	—	—	—	—	—	—	—
Puerto Rico	172	111	307	1,891	2,041	N	0	0	N	N	N	0	0	N	N
U.S. Virgin Islands	—	16	25	—	230	—	0	0	—	—	—	0	0	—	—

C.N.M.I.: Commonwealth of Northern Mariana Islands.

U: Unavailable. —: No reported cases. N: Not reportable. NN: Not Nationally Notifiable. Cum: Cumulative year-to-date counts. Med: Median. Max: Maximum.

* Case counts for reporting year 2012 and 2013 are provisional and subject to change. For further information on interpretation of these data, see <http://www.cdc.gov/nndss/document/ProvisionalNationalNotifiableDiseasesSurveillanceData20100927.pdf>. Data for TB are displayed in Table IV, which appears quarterly.

Morbidity and Mortality Weekly Report

TABLE II. (Continued) Provisional cases of selected notifiable diseases, United States, weeks ending April 20, 2013, and April 21, 2012 (16th week)*

Reporting area	Dengue Virus Infection									
	Dengue Fever [†]					Dengue Hemorrhagic Fever [§]				
	Current week	Previous 52 weeks		Cum 2013	Cum 2012	Current week	Previous 52 weeks		Cum 2013	Cum 2012
	Med	Max				Med	Max			
United States	—	11	31	46	61	—	0	1	—	—
New England	—	0	3	5	3	—	0	0	—	—
Connecticut	—	0	3	3	2	—	0	0	—	—
Maine	—	0	0	—	—	—	0	0	—	—
Massachusetts	—	0	0	—	—	—	0	0	—	—
New Hampshire	—	0	1	1	—	—	0	0	—	—
Rhode Island	—	0	0	—	—	—	0	0	—	—
Vermont	—	0	1	1	1	—	0	0	—	—
Mid. Atlantic	—	1	8	9	20	—	0	0	—	—
New Jersey	—	0	0	—	—	—	0	0	—	—
New York (Upstate)	—	0	3	—	5	—	0	0	—	—
New York City	—	1	7	3	10	—	0	0	—	—
Pennsylvania	—	0	2	6	5	—	0	0	—	—
E.N. Central	—	1	3	3	9	—	0	1	—	—
Illinois	—	0	3	—	4	—	0	1	—	—
Indiana	—	0	2	—	1	—	0	0	—	—
Michigan	—	0	1	—	1	—	0	0	—	—
Ohio	—	0	1	3	1	—	0	0	—	—
Wisconsin	—	0	1	—	2	—	0	0	—	—
W.N. Central	—	0	2	1	2	—	0	1	—	—
Iowa	—	0	1	—	1	—	0	0	—	—
Kansas	—	0	1	1	—	—	0	0	—	—
Minnesota	—	0	2	—	1	—	0	0	—	—
Missouri	—	0	1	—	—	—	0	1	—	—
Nebraska	—	0	0	—	—	—	0	0	—	—
North Dakota	—	0	0	—	—	—	0	0	—	—
South Dakota	—	0	1	—	—	—	0	0	—	—
S. Atlantic	—	3	12	22	16	—	0	0	—	—
Delaware	—	0	0	—	—	—	0	0	—	—
District of Columbia	—	0	0	—	—	—	0	0	—	—
Florida	—	2	9	19	13	—	0	0	—	—
Georgia	—	0	2	—	—	—	0	0	—	—
Maryland	—	0	2	1	1	—	0	0	—	—
North Carolina	—	0	1	2	—	—	0	0	—	—
South Carolina	—	0	1	—	1	—	0	0	—	—
Virginia	—	0	2	—	1	—	0	0	—	—
West Virginia	—	0	0	—	—	—	0	0	—	—
E.S. Central	—	0	2	3	1	—	0	0	—	—
Alabama	—	0	2	—	1	—	0	0	—	—
Kentucky	—	0	1	—	—	—	0	0	—	—
Mississippi	—	0	1	1	—	—	0	0	—	—
Tennessee	—	0	2	2	—	—	0	0	—	—
W.S. Central	—	0	2	—	1	—	0	0	—	—
Arkansas	—	0	0	—	—	—	0	0	—	—
Louisiana	—	0	1	—	—	—	0	0	—	—
Oklahoma	—	0	1	—	—	—	0	0	—	—
Texas	—	0	2	—	1	—	0	0	—	—
Mountain	—	0	2	—	—	—	0	0	—	—
Arizona	—	0	2	—	—	—	0	0	—	—
Colorado	—	0	0	—	—	—	0	0	—	—
Idaho	—	0	1	—	—	—	0	0	—	—
Montana	—	0	1	—	—	—	0	0	—	—
Nevada	—	0	1	—	—	—	0	0	—	—
New Mexico	—	0	0	—	—	—	0	0	—	—
Utah	—	0	0	—	—	—	0	0	—	—
Wyoming	—	0	0	—	—	—	0	0	—	—
Pacific	—	1	7	3	9	—	0	1	—	—
Alaska	—	0	1	—	—	—	0	0	—	—
California	—	1	5	—	6	—	0	0	—	—
Hawaii	—	0	2	—	1	—	0	0	—	—
Oregon	—	0	0	—	—	—	0	0	—	—
Washington	—	0	2	3	2	—	0	1	—	—
Territories										
American Samoa	—	0	0	—	—	—	0	0	—	—
C.N.M.I.	—	—	—	—	—	—	—	—	—	—
Guam	—	—	—	—	—	—	—	—	—	—
Puerto Rico	—	114	343	2,300	255	—	0	3	11	5
U.S. Virgin Islands	—	1	42	—	—	—	0	1	—	—

C.N.M.I.: Commonwealth of Northern Mariana Islands.

U: Unavailable. —: No reported cases. N: Not reportable. NN: Not Nationally Notifiable. Cum: Cumulative year-to-date counts. Med: Median. Max: Maximum.

* Case counts for reporting year 2012 and 2013 are provisional and subject to change. For further information on interpretation of these data, see <http://www.cdc.gov/nndss/document/ProvisionalNationalNotifiableDiseasesSurveillanceData20100927.pdf>. Data for TB are displayed in Table IV, which appears quarterly.

† Dengue Fever includes cases that meet criteria for Dengue Fever with hemorrhage, other clinical and unknown case classifications.

§ DHF includes cases that meet criteria for dengue shock syndrome (DSS), a more severe form of DHF.

Morbidity and Mortality Weekly Report

TABLE II. (Continued) Provisional cases of selected notifiable diseases, United States, weeks ending April 20, 2013, and April 21, 2012 (16th week)*

Reporting area	Ehrlichiosis/Anaplasmosis†														
	<i>Ehrlichia chaffeensis</i>					<i>Anaplasma phagocytophilum</i>					Undetermined				
	Current week	Previous 52 weeks		Cum 2013	Cum 2012	Current week	Previous 52 weeks		Cum 2013	Cum 2012	Current week	Previous 52 weeks		Cum 2013	Cum 2012
	Med	Max				Med	Max				Med	Max			
United States	—	13	66	18	56	3	20	68	29	211	—	2	19	4	16
New England	—	0	4	1	2	—	4	23	2	76	—	0	0	—	—
Connecticut	—	0	0	—	—	—	1	11	—	42	—	0	0	—	—
Maine	—	0	1	—	—	—	0	4	—	7	—	0	0	—	—
Massachusetts	—	0	0	—	—	—	0	0	—	—	—	0	0	—	—
New Hampshire	—	0	1	1	—	—	1	5	1	12	—	0	0	—	—
Rhode Island	—	0	3	—	2	—	1	11	1	14	—	0	0	—	—
Vermont	—	0	0	—	—	—	0	2	—	1	—	0	0	—	—
Mid. Atlantic	—	0	5	2	4	3	5	17	8	26	—	0	2	—	2
New Jersey	—	0	0	—	—	—	0	1	—	—	—	0	0	—	—
New York (Upstate)	—	0	3	1	3	3	4	17	6	19	—	0	2	—	2
New York City	—	0	3	1	1	—	0	4	2	7	—	0	0	—	—
Pennsylvania	—	0	1	—	—	—	0	0	—	—	—	0	0	—	—
E.N. Central	—	0	5	1	6	—	7	42	12	96	—	1	14	4	12
Illinois	—	0	4	—	2	—	0	1	1	4	—	0	1	—	—
Indiana	—	0	0	—	—	—	0	0	—	—	—	1	7	2	3
Michigan	—	0	0	—	—	—	0	0	—	—	—	0	1	1	1
Ohio	—	0	1	1	—	—	0	1	—	—	—	0	1	—	—
Wisconsin	—	0	3	—	4	—	7	42	11	92	—	0	6	1	8
W.N. Central	—	2	32	1	16	—	0	4	—	1	—	0	4	—	—
Iowa	N	0	0	N	N	N	0	0	N	N	N	0	0	N	N
Kansas	—	0	4	1	5	—	0	1	—	—	—	0	0	—	—
Minnesota	—	0	0	—	—	—	0	0	—	—	—	0	0	—	—
Missouri	—	2	31	—	11	—	0	4	—	1	—	0	4	—	—
Nebraska	—	0	0	—	—	—	0	1	—	—	—	0	0	—	—
North Dakota	—	0	0	—	—	—	0	0	—	—	—	0	0	—	—
South Dakota	—	0	0	—	—	—	0	0	—	—	—	0	1	—	—
S. Atlantic	—	4	32	10	21	—	1	8	7	5	—	0	2	—	—
Delaware	—	0	2	—	2	—	0	1	—	—	—	0	0	—	—
District of Columbia	N	0	0	N	N	N	0	0	N	N	N	0	0	N	N
Florida	—	0	3	2	5	—	0	2	1	—	—	0	0	—	—
Georgia	—	0	3	6	1	—	0	1	1	2	—	0	1	—	—
Maryland	—	0	4	—	2	—	0	2	1	—	—	0	0	—	—
North Carolina	—	0	19	1	4	—	0	6	1	1	—	0	0	—	—
South Carolina	—	0	1	—	—	—	0	0	—	—	—	0	0	—	—
Virginia	—	1	16	1	7	—	0	2	2	2	—	0	2	—	—
West Virginia	—	0	0	—	—	—	0	1	1	—	—	0	1	—	—
E.S. Central	—	1	9	2	4	—	0	3	—	5	—	0	1	—	2
Alabama	—	0	1	—	—	—	0	3	—	2	—	0	1	—	2
Kentucky	—	0	4	1	—	—	0	1	—	—	—	0	0	—	—
Mississippi	—	0	1	—	—	—	0	1	—	—	—	0	0	—	—
Tennessee	—	1	6	1	4	—	0	2	—	3	—	0	1	—	—
W.S. Central	—	0	16	1	3	—	0	2	—	2	—	0	1	—	—
Arkansas	—	0	11	1	2	—	0	1	—	1	—	0	0	—	—
Louisiana	—	0	1	—	—	—	0	0	—	—	—	0	1	—	—
Oklahoma	—	0	14	—	—	—	0	2	—	—	—	0	0	—	—
Texas	—	0	1	—	1	—	0	0	—	1	—	0	0	—	—
Mountain	—	0	0	—	—	—	0	0	—	—	—	0	1	—	—
Arizona	—	0	0	—	—	—	0	0	—	—	—	0	0	—	—
Colorado	N	0	0	N	N	N	0	0	N	N	N	0	0	N	N
Idaho	N	0	0	N	N	N	0	0	N	N	N	0	0	N	N
Montana	N	0	0	N	N	N	0	0	N	N	N	0	0	N	N
Nevada	—	0	0	—	—	—	0	0	—	—	—	0	0	—	—
New Mexico	N	0	0	N	N	N	0	0	N	N	N	0	0	N	N
Utah	—	0	0	—	—	—	0	0	—	—	—	0	1	—	—
Wyoming	—	0	0	—	—	—	0	0	—	—	—	0	0	—	—
Pacific	—	0	0	—	—	—	0	0	—	—	—	0	1	—	—
Alaska	N	0	0	N	N	N	0	0	N	N	N	0	0	N	N
California	—	0	0	—	—	—	0	0	—	—	—	0	1	—	—
Hawaii	N	0	0	N	N	N	0	0	N	N	N	0	0	N	N
Oregon	—	0	0	—	—	—	0	0	—	—	—	0	0	—	—
Washington	—	0	0	—	—	—	0	0	—	—	—	0	0	—	—
Territories															
American Samoa	N	0	0	N	N	N	0	0	N	N	N	0	0	N	N
C.N.M.I.	—	—	—	—	—	—	—	—	—	—	—	—	—	—	—
Guam	N	—	—	N	N	N	—	—	N	N	N	—	—	N	N
Puerto Rico	N	0	0	N	N	N	0	0	N	N	N	0	0	N	N
U.S. Virgin Islands	—	0	0	—	—	—	0	0	—	—	—	0	0	—	—

C.N.M.I.: Commonwealth of Northern Mariana Islands.

U: Unavailable. —: No reported cases. N: Not reportable. NN: Not Nationally Notifiable. Cum: Cumulative year-to-date counts. Med: Median. Max: Maximum.

* Case counts for reporting year 2012 and 2013 are provisional and subject to change. For further information on interpretation of these data, see <http://www.cdc.gov/nndss/document/ProvisionalNationalNotifiableDiseasesSurveillanceData20100927.pdf>. Data for TB are displayed in Table IV, which appears quarterly.

† Cumulative total *E. ewingii* cases reported for year 2012 = 17, and 0 cases reported for 2013.

Morbidity and Mortality Weekly Report

TABLE II. (Continued) Provisional cases of selected notifiable diseases, United States, weeks ending April 20, 2013, and April 21, 2012 (16th week)*

Reporting area	Giardiasis					Gonorrhea					Haemophilus influenzae, invasive† All ages, all serotypes				
	Current week	Previous 52 weeks		Cum 2013	Cum 2012	Current week	Previous 52 weeks		Cum 2013	Cum 2012	Current week	Previous 52 weeks		Cum 2013	Cum 2012
		Med	Max				Med	Max				Med	Max		
United States	125	239	393	3,125	3,633	2,583	6,311	7,765	86,227	97,786	37	59	166	1,098	1,233
New England	8	25	53	259	344	29	117	169	1,687	1,651	1	3	11	62	82
Connecticut	—	3	9	44	67	—	43	84	608	592	—	1	4	13	23
Maine	6	3	10	36	40	—	8	18	73	133	1	0	2	10	9
Massachusetts	—	13	26	142	175	—	54	99	818	685	—	2	6	34	43
New Hampshire	1	2	6	10	24	3	3	9	41	48	—	0	0	—	2
Rhode Island	—	0	7	9	15	24	8	22	111	171	—	0	1	—	5
Vermont	1	3	10	18	23	2	2	12	36	22	—	0	1	5	—
Mid. Atlantic	32	44	80	547	716	383	859	1,106	11,861	13,869	12	13	52	192	247
New Jersey	—	3	12	46	77	46	140	192	1,985	2,352	—	2	10	32	46
New York (Upstate)	15	14	47	162	192	127	143	521	1,919	1,963	7	3	35	44	63
New York City	5	14	26	185	275	—	279	351	3,059	4,530	—	3	7	37	65
Pennsylvania	12	12	24	154	172	210	288	560	4,898	5,024	5	4	10	79	73
E.N. Central	15	35	73	425	684	361	1,145	1,451	13,961	17,105	3	9	19	152	209
Illinois	—	6	15	35	124	7	354	442	2,883	5,208	—	3	7	44	58
Indiana	—	3	10	29	85	50	149	208	2,030	2,066	—	2	5	32	42
Michigan	—	8	21	90	171	147	241	378	3,214	3,667	—	1	5	25	30
Ohio	14	11	22	176	168	89	320	391	4,479	4,732	3	3	8	49	57
Wisconsin	1	8	25	95	136	68	88	150	1,355	1,432	—	1	4	2	22
W.N. Central	1	17	43	197	268	82	339	440	4,088	5,207	—	5	9	74	78
Iowa	1	4	11	42	70	3	34	53	414	602	—	0	0	—	—
Kansas	—	2	7	18	31	8	39	58	456	731	—	1	3	16	9
Minnesota	—	0	0	—	—	1	58	94	672	790	—	1	5	17	30
Missouri	—	6	14	74	71	69	152	198	2,066	2,402	—	2	7	31	24
Nebraska	—	1	11	35	51	—	25	43	225	416	—	0	2	6	10
North Dakota	—	1	4	8	13	—	6	12	88	91	—	0	1	3	5
South Dakota	—	2	9	20	32	1	14	26	167	175	—	0	1	1	—
S. Atlantic	34	47	75	700	658	667	1,326	1,670	18,949	22,656	7	16	39	331	286
Delaware	—	0	2	2	6	15	19	49	364	268	—	0	2	5	1
District of Columbia	—	0	5	—	18	—	43	94	628	743	—	0	2	3	—
Florida	24	21	56	361	279	218	382	478	6,017	5,931	6	5	11	92	71
Georgia	—	9	27	169	164	192	282	374	3,829	4,985	—	4	12	65	66
Maryland	5	5	11	66	64	—	100	241	1,101	1,414	—	2	5	30	33
North Carolina	N	0	0	N	N	—	215	544	2,395	4,476	—	1	12	50	35
South Carolina	3	2	5	28	34	124	144	218	2,237	2,389	—	1	10	49	35
Virginia	2	5	16	65	75	101	130	214	2,111	2,239	1	1	10	28	33
West Virginia	—	1	5	9	18	17	17	32	267	211	—	0	3	9	12
E.S. Central	2	3	13	45	49	350	545	789	7,544	8,714	7	4	12	99	88
Alabama	2	3	13	45	49	123	169	255	2,445	2,656	1	1	7	36	21
Kentucky	N	0	0	N	N	78	89	215	1,332	1,203	3	0	2	16	18
Mississippi	N	0	0	N	N	107	123	223	1,845	2,111	—	0	2	12	11
Tennessee	N	0	0	N	N	42	168	239	1,922	2,744	3	2	7	35	38
W.S. Central	2	6	16	76	70	176	950	1,581	13,216	13,192	5	3	18	58	56
Arkansas	2	2	8	21	24	52	79	122	1,235	1,406	3	0	3	8	9
Louisiana	—	4	10	55	46	63	172	612	1,259	1,493	—	1	5	11	21
Oklahoma	—	0	0	—	—	61	32	660	1,476	1,046	2	2	17	38	25
Texas	N	0	0	N	N	—	640	1,047	9,246	9,247	—	0	1	1	1
Mountain	2	20	48	192	277	109	245	323	2,497	3,751	—	4	14	67	115
Arizona	—	2	4	18	29	—	103	161	230	1,608	—	1	5	17	39
Colorado	1	6	15	41	86	59	57	100	905	781	—	1	4	13	24
Idaho	1	3	10	32	41	2	2	8	28	42	—	0	2	6	4
Montana	—	1	4	9	16	4	0	8	51	—	—	0	1	1	2
Nevada	—	2	5	20	16	37	46	79	720	586	—	0	1	4	10
New Mexico	—	2	7	23	23	5	33	60	407	578	—	1	3	16	19
Utah	—	5	15	36	52	2	9	18	150	139	—	0	4	9	15
Wyoming	—	0	4	13	14	—	1	4	6	17	—	0	1	1	2
Pacific	29	48	124	684	567	426	805	939	12,424	11,641	2	3	9	63	72
Alaska	—	2	6	13	23	6	15	32	264	204	1	0	2	4	4
California	17	29	47	466	358	335	672	769	10,235	9,897	—	1	2	14	27
Hawaii	1	0	3	11	8	—	16	26	208	211	—	0	2	7	8
Oregon	2	7	14	89	115	28	28	45	495	430	1	1	6	36	33
Washington	9	8	86	105	63	57	70	99	1,222	899	—	0	3	2	—
Territories															
American Samoa	—	0	0	—	—	—	0	0	—	—	—	0	0	—	—
C.N.M.I.	—	—	—	—	—	—	—	—	—	—	—	—	—	—	—
Guam	—	—	—	—	—	—	—	—	—	—	—	—	—	—	—
Puerto Rico	—	0	1	—	1	3	6	24	98	88	—	0	0	—	—
U.S. Virgin Islands	—	0	0	—	—	—	2	8	—	45	—	0	0	—	—

C.N.M.I.: Commonwealth of Northern Mariana Islands.

U: Unavailable. —: No reported cases. N: Not reportable. NN: Not Nationally Notifiable. Cum: Cumulative year-to-date counts. Med: Median. Max: Maximum.

* Case counts for reporting year 2012 and 2013 are provisional and subject to change. For further information on interpretation of these data, see <http://www.cdc.gov/nndss/document/ProvisionalNationalNotifiableDiseasesSurveillanceData20100927.pdf>. Data for TB are displayed in Table IV, which appears quarterly.

† Data for *H. influenzae* (age <5 yrs for serotype b, nonserotype b, and unknown serotype) are available in Table I.

Morbidity and Mortality Weekly Report

TABLE II. (Continued) Provisional cases of selected notifiable diseases, United States, weeks ending April 20, 2013, and April 21, 2012 (16th week)*

Reporting area	Hepatitis (viral, acute), by type														
	A					B					C				
	Current week	Previous 52 weeks		Cum 2013	Cum 2012	Current week	Previous 52 weeks		Cum 2013	Cum 2012	Current week	Previous 52 weeks		Cum 2013	Cum 2012
	Med	Max				Med	Max				Med	Max			
United States	15	27	49	343	451	23	52	87	651	887	16	32	60	368	505
New England	—	1	6	17	24	—	1	7	13	33	—	1	4	4	37
Connecticut	—	0	2	3	5	—	0	2	—	5	—	0	4	—	14
Maine	—	0	2	3	5	—	0	1	7	5	—	0	2	1	1
Massachusetts	—	1	4	7	10	—	1	5	6	20	—	0	3	1	19
New Hampshire	—	0	1	2	4	—	0	2	—	2	N	0	0	N	N
Rhode Island	—	0	1	1	—	U	0	0	U	U	U	0	0	U	U
Vermont	—	0	1	1	—	—	0	1	—	1	—	0	1	2	3
Mid. Atlantic	4	3	10	54	72	1	3	9	41	88	4	3	11	48	62
New Jersey	—	0	4	4	19	—	0	4	—	27	—	0	3	8	20
New York (Upstate)	4	1	4	19	20	1	1	7	10	16	4	1	10	27	18
New York City	—	1	4	13	17	—	1	5	18	26	—	0	1	1	4
Pennsylvania	—	1	5	18	16	—	1	4	13	19	—	1	4	12	20
E.N. Central	2	4	14	75	73	2	8	16	109	147	1	4	10	46	82
Illinois	—	1	4	12	27	—	1	4	13	31	—	0	3	7	7
Indiana	—	0	2	2	7	—	1	6	15	34	—	2	7	13	37
Michigan	1	2	7	35	28	—	1	7	22	26	1	1	5	23	20
Ohio	1	1	5	20	4	2	3	9	55	47	—	0	2	2	3
Wisconsin	—	0	2	6	7	—	0	1	4	9	—	0	3	1	15
W.N. Central	—	1	4	11	21	—	1	4	23	34	—	0	2	5	6
Iowa	—	0	2	1	—	—	0	2	3	2	—	0	0	—	—
Kansas	—	0	2	1	4	—	0	2	4	1	—	0	2	1	4
Minnesota	—	0	0	—	—	—	0	0	—	—	—	0	0	—	—
Missouri	—	0	1	2	11	—	1	3	16	28	—	0	1	4	2
Nebraska	—	0	3	5	6	—	0	1	—	3	—	0	1	—	—
North Dakota	—	0	1	2	—	—	0	0	—	—	—	0	0	—	—
South Dakota	—	0	0	—	—	—	0	1	—	—	—	0	2	—	—
S. Atlantic	6	5	16	82	66	6	15	24	197	214	7	8	15	93	103
Delaware	—	0	2	1	2	—	0	1	2	5	U	0	0	U	U
District of Columbia	—	0	0	—	—	—	0	0	—	—	—	0	0	—	—
Florida	4	2	8	21	22	4	5	11	81	68	3	2	5	36	31
Georgia	1	1	4	18	13	—	2	5	32	36	—	1	5	5	24
Maryland	1	0	3	6	7	1	1	4	16	24	1	1	4	17	10
North Carolina	—	1	4	18	5	—	1	5	14	23	2	1	6	14	16
South Carolina	—	0	1	3	3	—	1	4	11	10	—	0	1	—	—
Virginia	—	1	9	15	12	1	1	6	21	21	1	1	6	11	10
West Virginia	—	0	2	—	2	—	2	10	20	27	—	1	5	10	12
E.S. Central	—	2	5	18	14	7	10	21	154	179	1	7	11	95	101
Alabama	—	0	2	—	4	—	1	5	23	27	—	0	2	4	8
Kentucky	—	0	3	12	1	1	3	8	44	57	1	4	8	67	56
Mississippi	—	0	2	1	1	—	1	4	13	19	U	0	0	U	U
Tennessee	—	0	2	5	8	6	4	10	74	76	—	2	7	24	37
W.S. Central	1	2	8	21	50	6	5	39	69	89	2	2	16	28	16
Arkansas	—	0	2	—	2	—	1	4	17	21	1	0	2	4	—
Louisiana	—	0	1	3	1	—	0	4	8	19	—	0	3	3	3
Oklahoma	—	0	4	—	—	—	0	16	7	16	—	1	9	14	3
Texas	1	2	8	18	47	6	3	19	37	33	1	1	5	7	10
Mountain	1	2	7	26	47	—	1	4	11	31	—	1	5	13	51
Arizona	—	1	5	17	20	—	0	2	1	6	U	0	0	U	U
Colorado	—	0	3	1	15	—	0	2	—	7	—	0	3	—	17
Idaho	1	0	2	3	5	—	0	1	2	—	—	0	2	5	5
Montana	—	0	2	1	2	—	0	1	—	—	—	0	3	3	2
Nevada	—	0	1	1	3	—	0	2	7	13	—	0	1	3	6
New Mexico	—	0	2	2	1	—	0	1	1	1	—	0	3	—	9
Utah	—	0	1	1	1	—	0	2	—	4	—	0	1	2	12
Wyoming	—	0	0	—	—	—	0	0	—	—	—	0	0	—	—
Pacific	1	4	10	39	84	1	3	11	34	72	1	3	17	36	47
Alaska	—	0	1	1	1	—	0	1	2	3	—	0	0	—	—
California	—	3	8	20	70	—	2	7	16	50	1	1	6	17	27
Hawaii	—	0	1	2	2	—	0	1	3	3	—	0	0	—	—
Oregon	—	0	2	6	2	—	0	3	10	9	—	0	2	6	16
Washington	1	0	2	10	9	1	0	5	3	7	—	1	17	13	4
Territories															
American Samoa	—	0	0	—	—	—	0	0	—	—	—	0	0	—	—
C.N.M.I.	—	—	—	—	—	—	—	—	—	—	—	—	—	—	—
Guam	—	—	—	—	—	—	—	—	—	—	—	—	—	—	—
Puerto Rico	—	0	0	—	—	—	0	1	—	3	N	0	0	N	N
U.S. Virgin Islands	—	0	0	—	—	—	0	0	—	—	—	0	0	—	—

C.N.M.I.: Commonwealth of Northern Mariana Islands.

U: Unavailable. —: No reported cases. N: Not reportable. NN: Not Nationally Notifiable. Cum: Cumulative year-to-date counts. Med: Median. Max: Maximum.

* Case counts for reporting year 2012 and 2013 are provisional and subject to change. For further information on interpretation of these data, see <http://www.cdc.gov/nndss/document/ProvisionalNationalNotifiableDiseasesSurveillanceData20100927.pdf>. Data for TB are displayed in Table IV, which appears quarterly.

Morbidity and Mortality Weekly Report

TABLE II. (Continued) Provisional cases of selected notifiable diseases, United States, weeks ending April 20, 2013, and April 21, 2012 (16th week)*

Reporting area	Legionellosis					Lyme disease					Malaria				
	Current week	Previous 52 weeks		Cum 2013	Cum 2012	Current week	Previous 52 weeks		Cum 2013	Cum 2012	Current week	Previous 52 weeks		Cum 2013	Cum 2012
		Med	Max				Med	Max				Med	Max		
United States	9	63	155	531	627	47	477	1,581	2,070	4,775	8	23	74	219	257
New England	—	5	19	30	31	1	139	688	345	1,529	—	1	6	7	22
Connecticut	—	1	7	3	5	—	37	182	116	513	—	0	2	—	4
Maine	—	0	3	4	2	1	16	69	51	125	—	0	2	—	—
Massachusetts	—	3	11	16	16	—	57	364	115	638	—	0	4	5	17
New Hampshire	—	0	2	1	4	—	16	96	25	195	—	0	2	2	—
Rhode Island	—	0	6	3	4	—	0	43	7	8	—	0	5	—	—
Vermont	—	0	2	3	—	—	8	29	31	50	—	0	1	—	1
Mid. Atlantic	1	14	45	110	149	26	192	666	1,170	2,194	2	6	13	56	49
New Jersey	—	2	12	14	21	—	49	166	389	755	—	0	4	10	—
New York (Upstate)	1	6	15	26	51	12	39	264	178	299	1	1	4	13	5
New York City	—	2	13	25	29	—	1	36	4	5	1	3	11	26	35
Pennsylvania	—	4	19	45	48	14	97	413	599	1,135	—	1	4	7	9
E.N. Central	2	13	54	114	148	—	18	176	55	347	—	2	8	20	32
Illinois	—	2	23	18	30	—	1	18	4	16	—	0	6	5	10
Indiana	—	2	6	34	30	—	1	6	2	10	—	0	2	4	5
Michigan	—	2	9	6	19	—	1	9	4	16	—	0	5	4	4
Ohio	2	4	17	53	57	—	1	6	13	9	—	0	3	6	10
Wisconsin	—	1	7	3	12	—	13	146	32	296	—	0	2	1	3
W.N. Central	—	3	10	18	37	—	2	18	6	19	—	1	5	8	9
Iowa	—	0	2	1	2	—	1	16	2	12	—	0	2	3	1
Kansas	—	0	2	1	2	—	0	2	2	5	—	0	1	2	3
Minnesota	—	1	4	6	12	—	0	0	—	—	—	0	0	—	—
Missouri	—	1	8	2	16	—	0	2	2	1	—	0	2	1	4
Nebraska	—	0	2	6	2	—	0	2	—	—	—	0	1	1	1
North Dakota	—	0	1	—	1	—	0	1	—	—	—	0	1	—	—
South Dakota	—	0	2	2	2	—	0	1	—	1	—	0	2	1	—
S. Atlantic	1	11	27	110	127	20	65	234	454	621	5	7	15	93	78
Delaware	—	0	2	—	6	4	10	30	88	141	—	0	1	—	1
District of Columbia	N	0	0	N	N	N	0	0	N	N	—	0	1	—	2
Florida	1	4	11	49	53	3	2	7	18	30	1	1	3	19	21
Georgia	—	1	4	10	14	—	0	4	7	7	—	1	6	12	9
Maryland	—	2	6	16	18	6	28	97	233	287	3	2	8	40	17
North Carolina	—	1	8	15	7	—	0	33	12	7	—	0	8	8	7
South Carolina	—	0	3	3	4	—	0	3	—	8	—	0	2	1	3
Virginia	—	2	4	16	15	7	18	182	85	134	1	1	4	13	16
West Virginia	—	0	3	1	10	—	1	10	11	7	—	0	1	—	2
E.S. Central	2	2	7	22	26	—	1	5	11	13	—	0	4	7	5
Alabama	—	0	2	4	6	—	0	2	4	5	—	0	2	1	2
Kentucky	—	0	4	4	6	—	0	4	5	4	—	0	2	3	2
Mississippi	—	0	2	3	3	—	0	0	—	1	—	0	1	—	1
Tennessee	2	1	3	11	11	—	0	4	2	3	—	0	2	3	—
W.S. Central	2	4	36	42	32	—	1	14	4	6	—	2	38	9	18
Arkansas	2	0	3	5	3	—	0	0	—	—	—	0	1	—	2
Louisiana	—	0	3	10	4	—	0	1	—	1	—	0	2	2	1
Oklahoma	—	0	9	—	—	—	0	0	—	—	—	0	4	2	4
Texas	—	3	26	27	25	—	1	14	4	5	—	1	36	5	11
Mountain	—	2	7	30	27	—	0	5	6	6	—	1	6	4	14
Arizona	—	0	3	8	8	—	0	2	—	1	—	0	3	1	1
Colorado	—	0	3	5	8	—	0	0	—	—	—	0	3	—	4
Idaho	—	0	2	3	2	—	0	3	5	2	—	0	1	—	2
Montana	—	0	1	1	1	—	0	2	—	—	—	0	0	—	—
Nevada	—	0	2	4	4	—	0	2	—	1	—	0	1	3	4
New Mexico	—	0	2	4	—	—	0	1	—	—	—	0	1	—	1
Utah	—	0	5	5	3	—	0	1	1	1	—	0	2	—	2
Wyoming	—	0	1	—	1	—	0	1	—	1	—	0	0	—	—
Pacific	1	3	15	55	50	—	2	8	19	40	1	2	7	15	30
Alaska	—	0	1	—	—	—	0	1	—	3	1	0	1	1	2
California	1	2	10	37	37	—	1	4	7	21	—	1	5	9	26
Hawaii	—	0	1	2	—	N	0	0	N	N	—	0	1	1	1
Oregon	—	0	3	8	11	—	1	6	11	16	—	0	2	—	1
Washington	—	0	9	8	2	—	0	4	1	—	—	0	5	4	—
Territories															
American Samoa	N	0	0	N	N	N	0	0	N	N	—	0	0	—	—
C.N.M.I.	—	—	—	—	—	—	—	—	—	—	—	—	—	—	—
Guam	—	—	—	—	—	—	—	—	—	—	—	—	—	—	—
Puerto Rico	—	0	0	—	—	N	0	0	N	N	—	0	0	—	—
U.S. Virgin Islands	—	0	0	—	—	N	0	0	N	N	—	0	0	—	—

C.N.M.I.: Commonwealth of Northern Mariana Islands.

U: Unavailable. —: No reported cases. N: Not reportable. NN: Not Nationally Notifiable. Cum: Cumulative year-to-date counts. Med: Median. Max: Maximum.

* Case counts for reporting year 2012 and 2013 are provisional and subject to change. For further information on interpretation of these data, see <http://www.cdc.gov/nndss/document/ProvisionalNationalNotifiableDiseasesSurveillanceData20100927.pdf>. Data for TB are displayed in Table IV, which appears quarterly.

Morbidity and Mortality Weekly Report

TABLE II. (Continued) Provisional cases of selected notifiable diseases, United States, weeks ending April 20, 2013, and April 21, 2012 (16th week)*

Reporting area	Meningococcal disease, invasive† All serogroups					Mumps					Pertussis				
	Current week	Previous 52 weeks		Cum 2013	Cum 2012	Current week	Previous 52 weeks		Cum 2013	Cum 2012	Current week	Previous 52 weeks		Cum 2013	Cum 2012
		Med	Max				Med	Max				Med	Max		
United States	12	11	31	205	208	7	4	29	125	75	113	821	1,379	4,663	9,738
New England	—	0	3	8	2	—	0	2	4	—	—	50	101	283	351
Connecticut	—	0	1	2	—	—	0	1	3	—	—	2	9	7	43
Maine	—	0	1	1	—	—	0	1	1	—	—	14	37	105	40
Massachusetts	—	0	2	3	2	—	0	2	—	—	—	13	29	65	117
New Hampshire	—	0	1	1	—	—	0	1	—	—	—	4	18	23	29
Rhode Island	—	0	1	1	—	—	0	1	—	—	—	1	20	8	17
Vermont	—	0	1	—	—	—	0	0	—	—	—	8	42	75	105
Mid. Atlantic	3	1	5	21	30	1	0	4	8	8	21	95	190	410	1,568
New Jersey	—	0	2	2	4	—	0	0	—	—	—	6	40	20	317
New York (Upstate)	1	0	2	8	8	1	0	1	2	—	12	41	121	211	626
New York City	1	0	2	4	9	—	0	3	4	8	—	6	19	23	178
Pennsylvania	1	0	3	7	9	—	0	1	2	—	9	31	73	156	447
E.N. Central	—	1	4	12	27	—	1	3	11	22	6	164	358	862	2,914
Illinois	—	0	2	3	8	—	0	2	5	12	—	32	65	126	655
Indiana	—	0	1	3	1	—	0	2	1	2	—	9	18	55	65
Michigan	—	0	2	2	7	—	0	1	—	4	—	11	40	122	172
Ohio	—	0	2	4	8	—	0	2	5	2	6	17	37	265	241
Wisconsin	—	0	2	—	3	—	0	1	—	2	—	87	262	294	1,781
W.N. Central	—	1	4	16	17	—	0	2	2	8	—	120	255	387	1,271
Iowa	—	0	1	—	1	—	0	1	—	—	—	31	100	95	269
Kansas	—	0	1	2	3	—	0	1	—	2	—	18	30	35	102
Minnesota	—	0	3	5	2	—	0	1	—	2	—	37	145	91	682
Missouri	—	0	3	4	10	—	0	1	1	3	—	14	45	119	179
Nebraska	—	0	1	2	1	—	0	0	—	1	—	3	19	33	17
North Dakota	—	0	1	—	—	—	0	1	1	—	—	0	45	4	16
South Dakota	—	0	1	3	—	—	0	0	—	—	—	1	6	10	6
S. Atlantic	4	2	6	52	32	5	0	26	80	8	18	54	106	559	567
Delaware	1	0	0	1	1	—	0	0	—	—	—	1	4	10	9
District of Columbia	—	0	1	1	—	—	0	2	—	—	—	0	4	13	9
Florida	2	1	3	30	18	—	0	1	—	3	13	10	25	130	120
Georgia	—	0	2	4	5	—	0	1	—	—	—	7	15	99	46
Maryland	—	0	1	2	3	2	0	15	41	—	—	6	19	48	73
North Carolina	—	0	2	7	1	—	0	1	—	1	4	9	75	128	120
South Carolina	—	0	2	1	1	—	0	1	—	—	—	4	18	52	45
Virginia	1	0	2	4	—	3	0	11	39	3	1	11	41	76	124
West Virginia	—	0	1	2	3	—	0	1	—	1	—	1	12	3	21
E.S. Central	—	0	2	5	6	—	0	2	2	—	4	24	48	216	208
Alabama	—	0	1	1	2	—	0	1	1	—	—	4	12	46	55
Kentucky	—	0	1	1	1	—	0	1	—	—	3	12	35	87	81
Mississippi	—	0	1	2	1	—	0	0	—	—	—	1	3	17	30
Tennessee	—	0	1	1	2	—	0	1	1	—	1	6	15	66	42
W.S. Central	2	1	5	15	19	1	0	3	6	4	34	49	327	521	313
Arkansas	—	0	1	2	—	—	0	1	1	—	2	3	26	71	17
Louisiana	1	0	1	2	—	—	0	1	1	—	—	1	7	7	7
Oklahoma	—	0	2	1	4	—	0	3	—	—	—	0	34	14	1
Texas	1	0	4	10	15	1	0	2	4	4	32	42	279	429	288
Mountain	1	0	3	11	13	—	0	1	1	9	17	123	172	853	1,223
Arizona	—	0	2	6	1	—	0	0	—	3	2	16	32	145	337
Colorado	—	0	2	1	3	—	0	1	—	3	—	29	65	113	241
Idaho	1	0	1	2	1	—	0	0	—	—	3	4	14	53	28
Montana	—	0	1	—	4	—	0	0	—	1	12	11	48	202	79
Nevada	—	0	1	1	2	—	0	1	1	—	—	2	8	30	14
New Mexico	—	0	2	—	1	—	0	0	—	—	—	19	39	152	173
Utah	—	0	1	—	—	—	0	1	—	1	—	30	52	157	344
Wyoming	—	0	1	1	1	—	0	0	—	1	—	0	5	1	7
Pacific	2	2	16	65	62	—	1	3	11	16	13	103	564	572	1,323
Alaska	—	0	1	—	—	—	0	1	—	—	6	7	31	148	23
California	—	2	6	52	45	—	0	2	7	14	1	14	30	131	234
Hawaii	—	0	1	1	2	—	0	1	—	—	—	1	4	2	31
Oregon	—	0	2	5	13	—	0	2	3	1	1	10	55	105	236
Washington	2	0	12	7	2	—	0	1	1	1	5	63	530	186	799
Territories															
American Samoa	—	0	0	—	—	—	0	0	—	—	—	0	0	—	—
C.N.M.I.	—	—	—	—	—	—	—	—	—	—	—	—	—	—	—
Guam	—	—	—	—	—	—	—	—	—	—	—	—	—	—	—
Puerto Rico	—	0	0	—	—	—	0	0	—	3	—	0	0	—	—
U.S. Virgin Islands	—	0	0	—	—	—	0	0	—	—	—	0	0	—	—

C.N.M.I.: Commonwealth of Northern Mariana Islands.

U: Unavailable. —: No reported cases. N: Not reportable. NN: Not Nationally Notifiable. Cum: Cumulative year-to-date counts. Med: Median. Max: Maximum.

* Case counts for reporting year 2012 and 2013 are provisional and subject to change. For further information on interpretation of these data, see <http://www.cdc.gov/nndss/document/ProvisionalNationalNotifiableDiseasesSurveillanceData20100927.pdf>. Data for TB are displayed in Table IV, which appears quarterly.

† Data for meningococcal disease, invasive caused by serogroups A, C, Y, and W-135; serogroup B; other serogroup; and unknown serogroup are available in Table I.

Morbidity and Mortality Weekly Report

TABLE II. (Continued) Provisional cases of selected notifiable diseases, United States, weeks ending April 20, 2013, and April 21, 2012 (16th week)*

Reporting area	Rabies, animal					Salmonellosis					Shiga toxin-producing <i>E. coli</i> (STEC) [†]				
	Current week	Previous 52 weeks		Cum 2013	Cum 2012	Current week	Previous 52 weeks		Cum 2013	Cum 2012	Current week	Previous 52 weeks		Cum 2013	Cum 2012
		Med	Max				Med	Max				Med	Max		
United States	61	80	141	666	1,126	336	994	1,697	6,954	8,812	31	121	198	698	1,021
New England	3	6	16	78	117	5	37	73	302	390	—	4	9	40	25
Connecticut	—	3	8	34	60	—	7	19	66	94	—	1	4	9	8
Maine	3	1	4	16	35	1	3	11	22	20	—	0	4	6	—
Massachusetts	—	0	0	—	—	—	20	54	159	213	—	2	6	14	16
New Hampshire	—	1	3	10	4	1	3	9	23	20	—	0	4	7	—
Rhode Island	—	0	5	3	7	3	1	7	16	22	—	0	1	—	—
Vermont	—	1	7	15	11	—	1	7	16	21	—	0	3	4	1
Mid. Atlantic	5	18	38	82	240	39	88	188	748	1,072	5	11	24	83	115
New Jersey	—	0	0	—	—	—	16	48	123	262	—	1	6	9	31
New York (Upstate)	5	7	20	82	78	19	22	64	190	248	1	4	15	29	28
New York City	—	0	0	—	—	5	19	49	208	242	—	1	7	17	23
Pennsylvania	—	10	29	—	162	15	29	63	227	320	4	3	12	28	33
E.N. Central	—	1	13	5	21	24	99	237	807	1,128	9	18	77	125	195
Illinois	—	1	6	3	6	—	34	79	249	377	—	4	16	23	35
Indiana	—	0	2	—	—	—	12	40	85	135	—	2	23	16	36
Michigan	—	0	5	1	11	2	16	46	176	196	—	4	41	28	61
Ohio	—	0	7	1	4	22	24	50	230	227	9	4	20	46	27
Wisconsin	N	0	0	N	N	—	13	36	67	193	—	4	21	12	36
W.N. Central	5	3	18	36	56	5	43	108	419	467	—	15	31	80	139
Iowa	—	0	5	—	2	2	10	32	97	91	—	3	15	14	15
Kansas	3	1	5	20	20	3	9	18	73	95	—	1	7	12	17
Minnesota	—	0	0	—	—	—	0	0	—	—	—	0	0	—	—
Missouri	—	0	3	12	8	—	18	48	156	183	—	5	15	37	76
Nebraska	—	0	0	—	—	—	3	26	39	49	—	1	6	7	12
North Dakota	—	0	13	—	7	—	1	5	18	16	—	0	3	4	8
South Dakota	2	1	7	4	19	—	3	9	36	33	—	1	4	6	11
S. Atlantic	12	19	34	271	345	120	280	625	2,077	2,677	12	10	72	136	113
Delaware	—	0	0	—	—	1	2	10	14	27	—	0	3	2	2
District of Columbia	—	0	0	—	—	—	0	3	1	16	—	0	1	—	3
Florida	—	0	13	32	103	68	110	272	973	1,021	8	2	10	55	27
Georgia	—	0	0	—	—	10	43	112	284	420	2	2	7	27	25
Maryland	—	6	17	78	89	10	16	41	171	225	1	1	5	13	10
North Carolina	—	0	0	—	—	7	26	166	274	498	—	1	61	21	19
South Carolina	—	0	0	—	—	11	24	73	150	200	—	0	7	1	5
Virginia	12	11	23	149	131	13	23	48	194	237	1	1	6	11	20
West Virginia	—	1	6	12	22	—	3	15	16	33	—	0	2	6	2
E.S. Central	—	1	5	9	25	10	62	209	407	571	—	5	13	48	58
Alabama	—	1	5	6	20	3	19	59	126	172	—	1	5	11	16
Kentucky	—	0	3	3	4	—	9	50	66	106	—	1	9	11	11
Mississippi	—	0	1	—	1	—	15	65	99	136	—	0	3	6	6
Tennessee	—	0	0	—	—	7	18	63	116	157	—	2	11	20	25
W.S. Central	36	12	61	180	246	73	148	416	824	1,139	1	11	113	29	90
Arkansas	—	0	35	17	58	6	16	229	71	92	—	1	10	10	11
Louisiana	—	0	0	—	—	—	23	59	134	232	—	0	3	2	5
Oklahoma	14	0	23	19	10	15	15	34	129	115	1	2	8	11	12
Texas	22	11	39	144	178	52	91	322	490	700	—	7	96	6	62
Mountain	—	1	16	3	36	7	43	78	406	481	2	11	46	50	107
Arizona	N	0	0	N	N	2	13	24	148	143	—	2	7	8	33
Colorado	—	0	0	—	—	1	9	19	40	128	—	3	9	1	25
Idaho	—	0	15	—	—	1	2	7	28	34	1	1	30	13	15
Montana	N	0	0	N	N	—	2	7	14	19	1	0	5	8	5
Nevada	—	0	4	2	1	1	3	12	44	35	—	0	5	9	6
New Mexico	—	0	3	1	31	2	6	20	74	50	—	1	5	—	12
Utah	—	0	2	—	—	—	4	15	51	63	—	1	15	11	7
Wyoming	—	0	6	—	4	—	1	8	7	9	—	0	3	—	4
Pacific	—	4	14	2	40	53	106	193	964	887	2	15	42	107	179
Alaska	—	0	1	—	5	—	1	5	17	17	N	0	0	N	N
California	—	4	12	—	35	26	71	134	664	618	—	7	21	40	109
Hawaii	—	0	0	—	—	7	4	58	59	33	—	0	5	13	2
Oregon	—	0	2	2	—	8	8	17	102	95	—	3	11	30	44
Washington	—	0	0	—	—	12	13	95	122	124	2	3	34	24	24
Territories															
American Samoa	—	0	0	—	—	—	1	2	—	1	—	0	0	—	—
C.N.M.I.	—	—	—	—	—	—	—	—	—	—	—	—	—	—	—
Guam	—	—	—	—	—	—	—	—	—	—	—	—	—	—	—
Puerto Rico	—	0	3	—	25	—	0	4	—	17	—	0	2	—	—
U.S. Virgin Islands	—	0	0	—	—	—	0	0	—	—	—	0	0	—	—

C.N.M.I.: Commonwealth of Northern Mariana Islands.

U: Unavailable. —: No reported cases. N: Not reportable. NN: Not Nationally Notifiable. Cum: Cumulative year-to-date counts. Med: Median. Max: Maximum.

* Case counts for reporting year 2012 and 2013 are provisional and subject to change. For further information on interpretation of these data, see <http://www.cdc.gov/nndss/document/ProvisionalNationalNotifiableDiseasesSurveillanceData20100927.pdf>. Data for TB are displayed in Table IV, which appears quarterly.† Includes *E. coli* O157:H7; Shiga toxin-positive, serogroup non-O157; and Shiga toxin-positive, not serogrouped.

Morbidity and Mortality Weekly Report

TABLE II. (Continued) Provisional cases of selected notifiable diseases, United States, weeks ending April 20, 2013, and April 21, 2012 (16th week)*

Reporting area	Spotted Fever Rickettsiosis (including RMSF) [†]														
	Shigellosis					Confirmed					Probable				
	Current week	Previous 52 weeks		Cum 2013	Cum 2012	Current week	Previous 52 weeks		Cum 2013	Cum 2012	Current week	Previous 52 weeks		Cum 2013	Cum 2012
	Med	Max				Med	Max				Med	Max			
United States	81	264	405	1,847	3,455	—	3	13	19	36	2	54	229	94	376
New England	1	4	13	46	31	—	0	1	—	—	—	0	3	—	3
Connecticut	—	1	3	10	9	—	0	0	—	—	—	0	0	—	—
Maine	—	0	2	1	1	—	0	0	—	—	—	0	1	—	1
Massachusetts	—	2	10	28	21	—	0	0	—	—	—	0	3	—	—
New Hampshire	—	0	1	2	—	—	0	0	—	—	—	0	1	—	—
Rhode Island	1	0	5	3	—	—	0	0	—	—	—	0	3	—	2
Vermont	—	0	1	2	—	—	0	1	—	—	—	0	0	—	—
Mid. Atlantic	5	31	73	192	875	—	0	2	1	6	1	1	5	7	21
New Jersey	—	3	30	16	477	—	0	0	—	—	—	0	1	—	—
New York (Upstate)	4	12	37	70	143	—	0	1	—	1	1	0	3	2	2
New York City	—	8	20	86	211	—	0	0	—	—	—	0	3	3	6
Pennsylvania	1	2	7	20	44	—	0	2	1	5	—	0	4	2	13
E.N. Central	24	40	116	516	369	—	0	2	—	1	—	3	18	8	26
Illinois	—	5	17	25	46	—	0	1	—	—	—	1	12	2	12
Indiana	—	1	17	17	23	—	0	1	—	1	—	1	5	5	6
Michigan	—	4	14	57	77	—	0	1	—	—	—	0	1	—	—
Ohio	24	28	103	404	206	—	0	0	—	—	—	0	3	1	4
Wisconsin	—	2	18	13	17	—	0	0	—	—	—	0	3	—	4
W.N. Central	—	8	32	55	90	—	0	6	—	2	—	4	33	1	67
Iowa	—	2	11	15	4	—	0	0	—	—	—	0	1	1	3
Kansas	—	1	6	8	51	—	0	0	—	—	—	0	0	—	—
Minnesota	—	0	0	—	—	—	0	0	—	—	—	0	0	—	—
Missouri	—	1	7	14	30	—	0	5	—	2	—	4	33	—	63
Nebraska	—	2	22	13	4	—	0	1	—	—	—	0	1	—	1
North Dakota	—	0	1	3	1	—	0	1	—	—	—	0	0	—	—
South Dakota	—	0	3	2	—	—	0	0	—	—	—	0	1	—	—
S. Atlantic	13	51	98	346	814	—	2	8	18	21	1	14	145	40	77
Delaware	—	0	4	2	1	—	0	0	—	—	—	0	2	3	7
District of Columbia	—	0	3	—	9	—	0	0	—	—	—	0	1	—	—
Florida	11	26	66	114	465	—	0	1	1	—	—	0	3	2	6
Georgia	2	12	21	129	198	—	1	8	16	17	—	0	0	—	—
Maryland	—	3	14	23	73	—	0	0	—	—	—	0	2	5	2
North Carolina	—	2	10	37	35	—	0	4	—	—	—	1	133	7	18
South Carolina	—	1	5	25	7	—	0	1	1	2	—	1	6	5	5
Virginia	—	1	6	15	24	—	0	1	—	2	1	5	36	18	39
West Virginia	—	0	3	1	2	—	0	0	—	—	—	0	1	—	—
E.S. Central	2	20	41	137	407	—	0	2	—	—	—	11	56	29	76
Alabama	—	5	20	54	105	—	0	1	—	—	—	2	13	6	16
Kentucky	—	5	21	20	161	—	0	1	—	—	—	0	7	4	3
Mississippi	—	4	13	41	88	—	0	2	—	—	—	0	3	—	1
Tennessee	2	3	9	22	53	—	0	1	—	—	—	10	49	19	56
W.S. Central	26	48	133	350	610	—	0	3	—	1	—	10	73	8	81
Arkansas	7	2	7	41	16	—	0	3	—	1	—	8	64	7	41
Louisiana	—	3	10	40	60	—	0	0	—	—	—	0	2	—	1
Oklahoma	8	7	39	53	105	—	0	1	—	—	—	0	26	—	20
Texas	11	34	92	216	429	—	0	1	—	—	—	1	7	1	19
Mountain	2	11	32	63	86	—	0	1	—	5	—	0	5	—	21
Arizona	2	6	18	35	54	—	0	1	—	5	—	0	3	—	17
Colorado	—	1	19	4	8	—	0	1	—	—	—	0	1	—	—
Idaho	—	0	2	—	2	—	0	0	—	—	—	0	1	—	2
Montana	—	0	2	—	3	—	0	0	—	—	—	0	1	—	—
Nevada	—	1	9	13	1	—	0	1	—	—	—	0	0	—	—
New Mexico	—	1	10	7	12	—	0	0	—	—	—	0	1	—	—
Utah	—	0	4	3	6	—	0	0	—	—	—	0	1	—	2
Wyoming	—	0	3	1	—	—	0	0	—	—	—	0	1	—	—
Pacific	8	16	42	142	173	—	0	2	—	—	—	0	2	1	4
Alaska	—	0	1	—	5	N	0	0	N	N	N	0	0	N	N
California	3	12	33	90	124	—	0	2	—	—	—	0	1	1	4
Hawaii	—	0	6	20	4	N	0	0	N	N	N	0	0	N	N
Oregon	1	1	10	14	24	—	0	0	—	—	—	0	1	—	—
Washington	4	1	19	18	16	—	0	0	—	—	—	0	0	—	—
Territories															
American Samoa	—	1	3	—	—	N	0	0	N	N	N	0	0	N	N
C.N.M.I.	—	—	—	—	—	—	—	—	—	—	—	—	—	—	—
Guam	—	—	—	—	—	N	—	—	N	N	N	—	—	N	N
Puerto Rico	—	0	0	—	—	N	0	0	N	N	N	0	0	N	N
U.S. Virgin Islands	—	0	0	—	—	N	0	0	N	N	N	0	0	N	N

C.N.M.I.: Commonwealth of Northern Mariana Islands.

U: Unavailable. —: No reported cases. N: Not reportable. NN: Not Nationally Notifiable. Cum: Cumulative year-to-date counts. Med: Median. Max: Maximum.

* Case counts for reporting year 2012 and 2013 are provisional and subject to change. For further information on interpretation of these data, see <http://www.cdc.gov/nndss/document/ProvisionalNationalNotifiableDiseasesSurveillanceData20100927.pdf>. Data for TB are displayed in Table IV, which appears quarterly.

[†] Illnesses with similar clinical presentation that result from Spotted fever group rickettsia infections are reported as Spotted fever rickettsioses. Rocky Mountain spotted fever (RMSF) caused by *Rickettsia rickettsii*, is the most common and well-known spotted fever.

Morbidity and Mortality Weekly Report

TABLE II. (Continued) Provisional cases of selected notifiable diseases, United States, weeks ending April 20, 2013, and April 21, 2012 (16th week)*

Reporting area	<i>Streptococcus pneumoniae</i> , [†] invasive disease														
	All ages					Age <5					Syphilis, primary and secondary				
	Current week	Previous 52 weeks		Cum 2013	Cum 2012	Current week	Previous 52 weeks		Cum 2013	Cum 2012	Current week	Previous 52 weeks		Cum 2013	Cum 2012
		Med	Max				Med	Max				Med	Max		
United States	226	262	790	5,959	5,946	10	23	47	369	434	79	293	383	3,732	4,421
New England	7	11	55	233	269	—	1	4	12	27	2	7	16	116	147
Connecticut	—	6	21	122	133	—	0	2	5	8	—	0	4	5	22
Maine	6	2	8	48	36	—	0	1	3	1	—	0	5	2	6
Massachusetts	—	0	4	5	19	—	0	3	3	13	—	6	13	88	86
New Hampshire	—	1	5	30	36	—	0	1	1	4	1	0	4	9	12
Rhode Island	—	0	29	1	22	—	0	0	—	1	1	0	4	10	20
Vermont	1	1	6	27	23	—	0	0	—	—	—	0	2	2	1
Mid. Atlantic	43	34	63	653	884	1	2	5	31	34	6	35	55	491	556
New Jersey	—	0	16	8	252	—	0	3	—	11	—	3	8	33	65
New York (Upstate)	38	16	39	333	363	1	1	4	21	17	2	4	32	85	56
New York City	5	14	36	312	269	—	0	3	10	6	—	19	31	232	283
Pennsylvania	N	—	—	N	N	N	0	0	N	N	4	9	19	141	152
E.N. Central	39	57	131	1,237	1,222	—	4	12	49	86	3	30	60	329	536
Illinois	N	0	0	N	N	—	1	3	12	18	—	12	23	105	246
Indiana	—	13	49	212	270	—	0	2	3	11	2	4	10	53	69
Michigan	4	13	30	274	256	—	0	3	16	19	—	5	14	67	90
Ohio	32	21	63	550	509	—	1	6	13	26	—	8	15	86	109
Wisconsin	3	10	29	201	187	—	0	2	5	12	1	2	5	18	22
W.N. Central	1	12	34	229	270	—	2	5	37	35	2	8	17	125	100
Iowa	N	0	0	N	N	N	0	0	N	N	—	1	4	12	14
Kansas	N	0	0	N	N	N	0	0	N	N	—	0	3	6	5
Minnesota	—	7	24	129	165	—	0	3	11	9	1	3	5	38	29
Missouri	N	0	0	N	N	—	1	3	14	14	1	3	9	58	49
Nebraska	—	1	7	51	64	—	0	1	5	4	—	0	2	7	2
North Dakota	—	0	4	2	6	—	0	1	2	—	—	0	1	1	1
South Dakota	1	2	6	47	35	—	0	1	5	8	—	0	2	3	—
S. Atlantic	60	61	138	1,537	1,312	2	5	14	108	84	23	61	104	794	1,017
Delaware	1	0	3	16	17	—	0	1	—	—	1	0	5	7	19
District of Columbia	—	1	7	24	21	—	0	1	—	1	—	3	8	59	69
Florida	25	18	59	513	414	1	1	6	37	29	2	25	37	344	430
Georgia	9	18	58	468	358	—	2	6	33	19	12	10	51	114	127
Maryland	8	7	26	208	197	1	0	4	15	13	—	8	14	91	126
North Carolina	N	0	0	N	N	N	0	0	N	N	—	1	14	—	110
South Carolina	17	7	20	210	168	—	0	3	5	9	7	4	10	86	68
Virginia	N	0	0	N	N	—	1	5	13	10	1	4	40	91	65
West Virginia	—	5	23	98	137	—	0	2	5	3	—	0	2	2	3
E.S. Central	20	23	56	590	533	3	2	5	36	35	7	13	25	135	225
Alabama	4	2	10	81	44	1	0	3	11	1	—	3	10	36	64
Kentucky	8	4	12	121	93	—	0	1	3	3	6	2	9	37	29
Mississippi	2	3	12	94	80	1	0	2	8	10	1	1	11	24	54
Tennessee	6	12	37	294	316	1	0	3	14	21	—	5	9	38	78
W.S. Central	34	28	352	755	670	3	3	24	50	63	10	42	66	581	637
Arkansas	—	3	24	89	74	—	0	2	1	6	10	2	13	55	75
Louisiana	1	4	14	97	94	—	0	4	7	7	—	6	20	63	89
Oklahoma	N	0	0	N	N	1	0	2	8	10	—	2	5	28	20
Texas	33	20	328	569	502	2	2	23	34	40	—	33	47	435	453
Mountain	20	28	63	671	721	1	2	7	39	61	6	12	25	130	170
Arizona	18	10	40	383	283	1	1	4	20	24	—	3	7	2	65
Colorado	—	6	22	69	165	—	0	3	3	11	—	4	12	48	44
Idaho	N	0	0	N	N	—	0	1	3	—	—	0	4	2	9
Montana	—	0	4	10	20	—	0	1	2	1	—	0	1	3	—
Nevada	—	2	7	48	46	—	0	1	2	7	5	3	8	45	27
New Mexico	2	5	17	134	118	—	0	4	7	8	1	2	5	17	17
Utah	—	2	10	17	80	—	0	3	2	10	—	1	3	12	8
Wyoming	—	0	3	10	9	—	0	1	—	—	—	0	1	1	—
Pacific	2	4	10	54	65	—	0	2	7	9	20	73	104	1,031	1,033
Alaska	2	2	8	32	46	—	0	2	6	9	—	0	2	6	3
California	N	0	0	N	N	N	0	0	N	N	16	61	86	879	864
Hawaii	—	1	6	22	19	—	0	2	1	—	—	0	3	2	4
Oregon	N	0	0	N	N	N	0	0	N	N	—	4	15	80	64
Washington	N	0	0	N	N	N	0	0	N	N	4	5	13	64	98
Territories															
American Samoa	N	0	0	N	N	—	0	0	—	—	—	0	0	—	—
C.N.M.I.	—	—	—	—	—	—	—	—	—	—	—	—	—	—	—
Guam	—	—	—	—	—	—	—	—	—	—	—	—	—	—	—
Puerto Rico	—	0	0	—	—	—	0	0	—	—	1	7	17	112	68
U.S. Virgin Islands	—	0	0	—	—	—	0	0	—	—	—	0	0	—	—

C.N.M.I.: Commonwealth of Northern Mariana Islands.

U: Unavailable. —: No reported cases. N: Not reportable. NN: Not Nationally Notifiable. Cum: Cumulative year-to-date counts. Med: Median. Max: Maximum.

* Case counts for reporting year 2012 and 2013 are provisional and subject to change. For further information on interpretation of these data, see <http://www.cdc.gov/nndss/document/ProvisionalNationalNotifiableDiseasesSurveillanceData20100927.pdf>. Data for TB are displayed in Table IV, which appears quarterly.

† Includes drug resistant and susceptible cases of invasive *Streptococcus pneumoniae* disease among children <5 years and among all ages. Case definition: Isolation of *S. pneumoniae* from a normally sterile body site (e.g., blood or cerebrospinal fluid).

Morbidity and Mortality Weekly Report

TABLE II. (Continued) Provisional cases of selected notifiable diseases, United States, weeks ending April 20, 2013, and April 21, 2012 (16th week)*

Reporting area	Varicella (chickenpox)					West Nile virus disease [†]									
	Current week	Previous 52 weeks		Cum 2013	Cum 2012	Neuroinvasive					Nonneuroinvasive [§]				
		Med	Max			Current week	Previous 52 weeks	Cum 2013	Cum 2012	Current week	Previous 52 weeks	Cum 2013	Cum 2012		
United States	101	184	371	2,519	5,027	—	4	323	—	2	—	4	342	1	2
New England	3	20	54	228	528	—	0	8	—	—	—	0	5	—	—
Connecticut	—	5	11	60	74	—	0	2	—	—	—	0	3	—	—
Maine	2	3	10	47	122	—	0	1	—	—	—	0	0	—	—
Massachusetts	—	7	21	85	211	—	0	7	—	—	—	0	3	—	—
New Hampshire	—	2	8	9	52	—	0	1	—	—	—	0	0	—	—
Rhode Island	—	0	10	4	21	—	0	1	—	—	—	0	1	—	—
Vermont	1	2	13	23	48	—	0	1	—	—	—	0	1	—	—
Mid. Atlantic	7	17	42	223	543	—	0	19	—	—	—	0	18	—	—
New Jersey	—	4	19	2	214	—	0	5	—	—	—	0	5	—	—
New York (Upstate)	N	0	0	N	N	—	0	6	—	—	—	0	8	—	—
New York City	—	0	0	—	—	—	0	5	—	—	—	0	2	—	—
Pennsylvania	7	14	33	221	329	—	0	5	—	—	—	0	4	—	—
E.N. Central	42	56	145	830	1,303	—	0	91	—	—	—	0	39	—	1
Illinois	1	16	29	234	357	—	0	31	—	—	—	0	18	—	1
Indiana	6	7	26	91	116	—	0	8	—	—	—	0	6	—	—
Michigan	10	15	62	174	342	—	0	33	—	—	—	0	12	—	—
Ohio	22	14	33	249	319	—	0	19	—	—	—	0	12	—	—
Wisconsin	3	7	24	82	169	—	0	11	—	—	—	0	3	—	—
W.N. Central	—	6	39	32	281	—	0	36	—	1	—	0	60	—	—
Iowa	N	0	0	N	N	—	0	3	—	—	—	0	5	—	—
Kansas	—	0	0	—	85	—	0	3	—	1	—	0	6	—	—
Minnesota	—	0	0	—	—	—	0	6	—	—	—	0	7	—	—
Missouri	—	5	36	10	161	—	0	4	—	—	—	0	1	—	—
Nebraska	—	0	3	—	16	—	0	8	—	—	—	0	22	—	—
North Dakota	—	0	5	10	10	—	0	8	—	—	—	0	11	—	—
South Dakota	—	0	4	12	9	—	0	17	—	—	—	0	28	—	—
S. Atlantic	25	25	48	429	719	—	0	21	—	—	—	0	21	—	—
Delaware	—	0	2	3	2	—	0	1	—	—	—	0	2	—	—
District of Columbia	—	0	2	—	8	—	0	3	—	—	—	0	1	—	—
Florida	19	12	31	239	406	—	0	5	—	—	—	0	5	—	—
Georgia	—	1	6	23	15	—	0	6	—	—	—	0	10	—	—
Maryland	N	0	0	N	N	—	0	5	—	—	—	0	4	—	—
North Carolina	N	0	0	N	N	—	0	3	—	—	—	0	0	—	—
South Carolina	6	0	13	52	—	—	0	5	—	—	—	0	2	—	—
Virginia	—	8	20	86	178	—	0	4	—	—	—	0	3	—	—
West Virginia	—	2	12	26	110	—	0	1	—	—	—	0	3	—	—
E.S. Central	—	3	9	56	85	—	0	20	—	—	—	0	22	1	1
Alabama	—	3	9	55	80	—	0	7	—	—	—	0	4	—	1
Kentucky	N	0	0	N	N	—	0	4	—	—	—	0	2	—	—
Mississippi	—	0	1	1	5	—	0	12	—	—	—	0	17	1	—
Tennessee	N	0	0	N	N	—	0	4	—	—	—	0	2	—	—
W.S. Central	20	37	213	495	852	—	2	145	—	—	—	1	166	—	—
Arkansas	3	3	19	28	70	—	0	9	—	—	—	0	3	—	—
Louisiana	—	0	6	15	27	—	0	18	—	—	—	0	26	—	—
Oklahoma	N	0	0	N	N	—	0	24	—	—	—	0	22	—	—
Texas	17	34	211	452	755	—	2	105	—	—	—	1	131	—	—
Mountain	4	19	43	205	678	—	0	37	—	1	—	0	22	—	—
Arizona	—	5	21	7	224	—	0	10	—	1	—	0	7	—	—
Colorado	—	7	17	69	210	—	0	17	—	—	—	0	13	—	—
Idaho	N	0	0	N	N	—	0	1	—	—	—	0	3	—	—
Montana	2	2	8	28	47	—	0	1	—	—	—	0	2	—	—
Nevada	N	0	0	N	N	—	0	1	—	—	—	0	2	—	—
New Mexico	2	1	5	23	50	—	0	9	—	—	—	0	5	—	—
Utah	—	4	13	76	139	—	0	1	—	—	—	0	1	—	—
Wyoming	—	0	3	2	8	—	0	1	—	—	—	0	2	—	—
Pacific	—	2	8	21	38	—	0	33	—	—	—	0	26	—	—
Alaska	—	1	4	14	21	—	0	0	—	—	—	0	0	—	—
California	—	0	4	3	6	—	0	33	—	—	—	0	25	—	—
Hawaii	—	1	2	4	11	—	0	0	—	—	—	0	0	—	—
Oregon	N	0	0	N	N	—	0	0	—	—	—	0	2	—	—
Washington	N	0	0	N	N	—	0	4	—	—	—	0	0	—	—
Territories															
American Samoa	N	0	0	N	N	—	0	0	—	—	—	0	0	—	—
C.N.M.I.	—	—	—	—	—	—	—	—	—	—	—	—	—	—	—
Guam	—	—	—	—	—	—	—	—	—	—	—	—	—	—	—
Puerto Rico	—	0	4	—	48	—	0	1	—	—	—	0	0	—	—
U.S. Virgin Islands	—	0	0	—	—	—	0	0	—	—	—	0	0	—	—

C.N.M.I.: Commonwealth of Northern Mariana Islands.

U: Unavailable. —: No reported cases. N: Not reportable. NN: Not Nationally Notifiable. Cum: Cumulative year-to-date counts. Med: Median. Max: Maximum.

* Case counts for reporting year 2012 and 2013 are provisional and subject to change. For further information on interpretation of these data, see <http://www.cdc.gov/nndss/document/ProvisionalNationalNotifiableDiseasesSurveillanceData20100927.pdf>. Data for TB are displayed in Table IV, which appears quarterly.

† Updated weekly from reports to the Division of Vector-Borne Infectious Diseases, National Center for Zoonotic, Vector-Borne, and Enteric Diseases (ArboNET Surveillance). Data for California serogroup, eastern equine, Powassan, St. Louis, and western equine diseases are available in Table I.

§ Not reportable in all states. Data from states where the condition is not reportable are excluded from this table, except starting in 2007 for the domestic arboviral diseases and influenza-associated pediatric mortality, and in 2003 for SARS-CoV. Reporting exceptions are available at http://www.cdc.gov/nndss/document/SRCA_FINAL_REPORT_2006-2010.xlsx.

Morbidity and Mortality Weekly Report

TABLE III. Deaths in 122 U.S. cities,* week ending April 20, 2013 (16th week)

Reporting area	All causes, by age (years)						P&I†	Total	Reporting area (Continued)	All causes, by age (years)						P&I†	Total
	All Ages	≥65	45-64	25-44	1-24	<1				All Ages	≥65	45-64	25-44	1-24	<1		
New England	439	316	83	23	5	12	43	S. Atlantic	1,106	711	285	62	28	20	71		
Boston, MA	126	90	22	8	1	5	14	Atlanta, GA	160	99	39	15	5	2	13		
Bridgeport, CT	29	20	4	3	2	—	5	Baltimore, MD	161	94	56	8	2	1	7		
Cambridge, MA	12	9	2	1	—	—	2	Charlotte, NC	151	95	40	9	3	4	6		
Fall River, MA	34	27	7	—	—	—	2	Jacksonville, FL	154	106	34	7	3	4	15		
Hartford, CT	63	39	17	4	1	2	2	Miami, FL	70	46	18	3	3	—	1		
Lowell, MA	22	21	—	—	1	—	2	Norfolk, VA	52	35	10	3	—	4	7		
Lynn, MA	6	4	2	—	—	—	2	Richmond, VA	80	54	17	2	5	2	1		
New Bedford, MA	23	19	3	1	—	—	1	Savannah, GA	72	41	18	9	3	1	5		
New Haven, CT	U	U	U	U	U	U	U	St. Petersburg, FL	74	54	15	3	2	—	5		
Providence, RI	U	U	U	U	U	U	U	Tampa, FL	16	8	6	1	1	—	—		
Somerville, MA	U	U	U	U	U	U	U	Washington, D.C.	103	67	31	2	1	2	8		
Springfield, MA	40	25	10	1	—	4	2	Wilmington, DE	13	12	1	—	—	—	3		
Waterbury, CT	26	22	1	3	—	—	3	E.S. Central	1,045	676	274	58	17	20	82		
Worcester, MA	58	40	15	2	—	1	8	Birmingham, AL	201	130	54	9	3	5	16		
Mid. Atlantic	1,952	1,399	418	85	29	21	109	Chattanooga, TN	102	80	17	3	—	2	9		
Albany, NY	58	36	13	3	2	4	5	Knoxville, TN	105	60	33	5	4	3	8		
Allentown, PA	28	23	5	—	—	—	5	Lexington, KY	106	78	20	5	1	2	4		
Buffalo, NY	110	80	22	4	1	3	5	Memphis, TN	205	125	56	17	5	2	24		
Camden, NJ	31	17	8	5	1	—	2	Mobile, AL	106	67	29	7	3	—	8		
Elizabeth, NJ	19	13	6	—	—	—	2	Montgomery, AL	63	39	22	2	—	—	5		
Erie, PA	46	30	14	2	—	—	2	Nashville, TN	157	97	43	10	1	6	8		
Jersey City, NJ	15	9	5	1	—	—	1	W.S. Central	1,441	921	364	91	33	31	78		
New York City, NY	1,257	913	263	53	20	8	54	Austin, TX	96	61	21	8	3	3	5		
Newark, NJ	21	9	6	6	—	—	1	Baton Rouge, LA	100	64	28	5	2	1	3		
Paterson, NJ	18	8	7	1	—	2	4	Corpus Christi, TX	79	52	20	4	2	1	7		
Philadelphia, PA	U	U	U	U	U	U	U	Dallas, TX	222	139	61	14	2	5	12		
Pittsburgh, PA [§]	57	46	8	—	3	—	4	El Paso, TX	79	59	14	5	—	1	3		
Reading, PA	33	26	5	1	1	—	5	Fort Worth, TX	U	U	U	U	U	U	U		
Rochester, NY	86	60	19	4	—	3	4	Houston, TX	316	189	81	29	9	8	9		
Schenectady, NY	26	21	5	—	—	—	4	Little Rock, AR	85	59	19	4	1	2	6		
Scranton, PA	30	25	5	—	—	—	2	New Orleans, LA	73	35	22	7	6	3	—		
Syracuse, NY	58	38	18	1	1	—	5	San Antonio, TX	248	168	63	7	6	4	25		
Trenton, NJ	24	16	4	3	—	1	1	Shreveport, LA	92	53	29	6	1	3	5		
Utica, NY	15	14	1	—	—	—	2	Tulsa, OK	51	42	6	2	1	—	3		
Yonkers, NY	20	15	4	1	—	—	1	Mountain	1,195	791	274	74	29	25	56		
E.N. Central	2,170	1,451	513	126	41	39	169	Albuquerque, NM	114	67	33	12	1	1	11		
Akron, OH	53	36	9	5	3	—	6	Boise, ID	58	37	13	2	3	3	1		
Canton, OH	27	19	6	2	—	—	3	Colorado Springs, CO	73	50	16	5	2	—	—		
Chicago, IL	264	171	68	16	6	3	17	Denver, CO	95	62	20	7	1	5	—		
Cincinnati, OH	80	46	15	7	5	7	6	Las Vegas, NV	304	204	79	11	6	4	17		
Cleveland, OH	279	203	59	12	3	2	12	Ogden, UT	30	22	8	—	—	—	2		
Columbus, OH	275	174	73	18	5	5	21	Phoenix, AZ	198	125	39	19	7	7	11		
Dayton, OH	131	95	23	9	3	1	14	Pueblo, CO	23	16	4	2	1	—	2		
Detroit, MI	166	83	63	14	5	1	6	Salt Lake City, UT	129	89	23	7	5	5	5		
Evansville, IN	59	41	14	4	—	—	4	Tucson, AZ	171	119	39	9	3	—	7		
Fort Wayne, IN	81	57	17	5	1	1	2	Pacific	1,831	1,298	379	91	31	30	140		
Gary, IN	6	4	2	—	—	—	—	Berkeley, CA	12	9	—	1	—	2	2		
Grand Rapids, MI	46	31	10	2	—	3	4	Fresno, CA	129	84	32	4	5	4	8		
Indianapolis, IN	192	122	46	11	2	11	22	Glendale, CA	32	27	4	1	—	—	9		
Lansing, MI	63	40	19	1	—	3	8	Honolulu, HI	80	67	9	2	2	—	10		
Milwaukee, WI	97	59	28	7	2	1	5	Long Beach, CA	53	33	14	5	1	—	5		
Peoria, IL	62	49	9	3	1	—	7	Los Angeles, CA	254	173	48	20	7	6	24		
Rockford, IL	78	58	16	3	1	—	6	Pasadena, CA	30	23	5	—	—	1	1		
South Bend, IN	40	35	5	—	—	—	5	Portland, OR	169	121	39	7	1	1	5		
Toledo, OH	99	74	20	3	2	—	11	Sacramento, CA	237	170	49	12	2	4	15		
Youngstown, OH	72	54	11	4	2	1	10	San Diego, CA	171	122	33	8	1	6	10		
W.N. Central	738	479	179	50	13	14	48	San Francisco, CA	112	70	31	9	—	2	2		
Des Moines, IA	89	60	22	4	1	2	8	San Jose, CA	221	163	44	6	7	1	22		
Duluth, MN	27	24	3	—	—	—	2	Santa Cruz, CA	29	15	11	2	—	1	1		
Kansas City, KS	26	12	13	—	1	—	2	Seattle, WA	109	76	23	9	—	1	8		
Kansas City, MO	126	79	29	12	4	1	8	Spokane, WA	63	53	7	1	1	1	6		
Lincoln, NE	54	44	7	1	1	1	1	Tacoma, WA	130	92	30	4	4	—	12		
Minneapolis, MN	64	36	19	3	—	5	1	Total¶	11,917	8,042	2,769	660	226	212	796		
Omaha, NE	89	63	15	6	2	3	5										
St. Louis, MO	109	52	41	12	2	2	9										
St. Paul, MN	57	41	11	3	1	—	6										
Wichita, KS	97	68	19	9	1	—	6										

U: Unavailable. —: No reported cases.

* Mortality data in this table are voluntarily reported from 122 cities in the United States, most of which have populations of >100,000. A death is reported by the place of its occurrence and by the week that the death certificate was filed. Fetal deaths are not included.

† Pneumonia and influenza.

§ Because of changes in reporting methods in this Pennsylvania city, these numbers are partial counts for the current week. Complete counts will be available in 4 to 6 weeks.

¶ Total includes unknown ages.