

## Notifiable Diseases and Mortality Tables

TABLE I. Provisional cases of infrequently reported notifiable diseases (<1,000 cases reported during the preceding year) — United States, week ending May 18, 2013 (20th week)\*

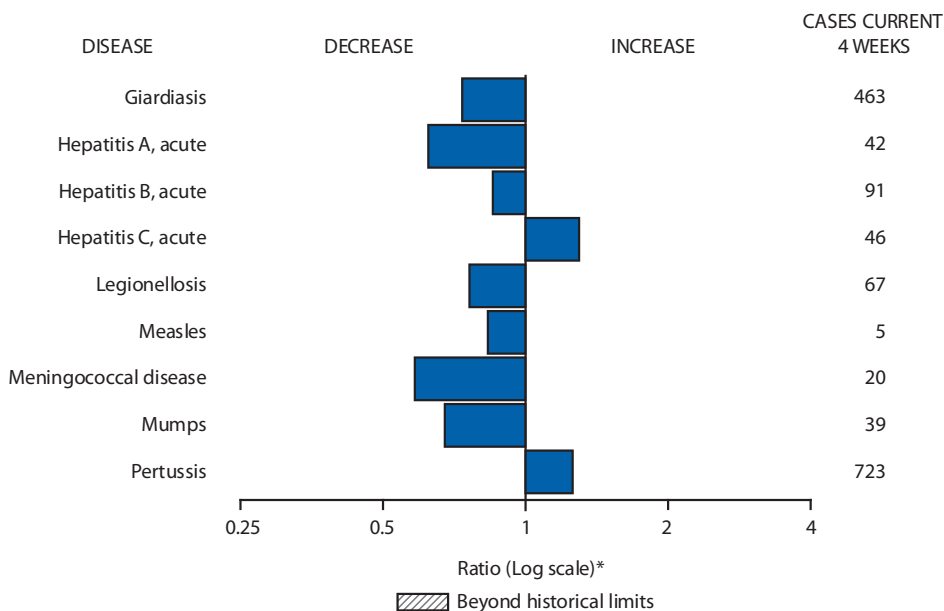
Disease	Current week	Cum 2013	5-year weekly average <sup>†</sup>	Total cases reported for previous years					States reporting cases during current week (No.)
				2012	2011	2010	2009	2008	
Anthrax	—	—	—	—	1	—	1	—	
Arboviral diseases <sup>§, ¶</sup> :									
California serogroup virus disease	—	—	0	78	137	75	55	62	
Eastern equine encephalitis virus disease	—	2	—	15	4	10	4	4	
Powassan virus disease	—	—	0	7	16	8	6	2	
St. Louis encephalitis virus disease	—	—	0	3	6	10	12	13	
Western equine encephalitis virus disease	—	—	—	—	—	—	—	—	
Babesiosis	—	23	6	950	1,128	NN	NN	NN	
Botulism, total	—	49	3	124	153	112	118	145	
foodborne	—	—	0	23	24	7	10	17	
infant	—	43	2	87	97	80	83	109	
other (wound and unspecified)	—	6	0	14	32	25	25	19	
Brucellosis	2	24	3	120	79	115	115	80	MD (1), MT (1)
Chancroid	—	6	0	17	8	24	28	25	
Cholera	—	1	0	6	40	13	10	5	
Cyclosporiasis <sup>§</sup>	—	8	3	124	151	179	141	139	
Diphtheria	—	—	—	1	—	—	—	—	
<i>Haemophilus influenzae</i> ,** invasive disease (age <5 yrs):									
serotype b	1	10	0	26	14	23	35	30	NY (1)
nonsertotype b	1	61	4	194	145	200	236	244	OK (1)
unknown serotype	5	103	4	230	226	223	178	163	NY (1), OH (2), MO (1), OR (1)
Hansen disease <sup>§</sup>	1	14	1	79	82	98	103	80	NE (1)
Hantavirus pulmonary syndrome <sup>§</sup>	—	1	1	26	23	20	20	18	
Hemolytic uremic syndrome, postdiarrheal <sup>§</sup>	1	49	4	228	290	266	242	330	TN (1)
Influenza-associated pediatric mortality <sup>§, ††</sup>	7	129	2	52	118	61	358	90	MA (1), IN (1), TX (1), CA (3), MI (1)
Listeriosis	4	131	12	700	870	821	851	759	PA (2), TN (1), CA (1)
Measles <sup>§§</sup>	4	54	5	54	220	63	71	140	NYC (2), NC (1), TX (1)
Meningococcal disease, invasive <sup>¶¶</sup> :									
A, C, Y, and W-135	2	51	5	154	257	280	301	330	NY (1), WA (1)
serogroup B	1	35	3	100	159	135	174	188	ID (1)
other serogroup	—	4	1	21	20	12	23	38	
unknown serogroup	1	164	8	283	323	406	482	616	TX (1)
Novel influenza A virus infections <sup>***</sup>	—	—	376	313	14	4	43,774	2	
Plague	—	—	0	3	3	2	8	3	
Poliomyelitis, paralytic	—	—	—	—	—	—	1	—	
Polio virus Infection, nonparalytic <sup>§</sup>	—	—	—	—	—	—	—	—	
Psittacosis <sup>§</sup>	—	1	0	2	2	4	9	8	
Q fever, total <sup>§</sup>	—	20	3	135	134	131	113	120	
acute	—	16	3	114	110	106	93	106	
chronic	—	4	0	21	24	25	20	14	
Rabies, human	—	—	—	1	6	2	4	2	
Rubella <sup>†††</sup>	1	4	0	9	4	5	3	16	MD (1)
Rubella, congenital syndrome	—	—	—	2	—	—	2	—	
SARS-CoV <sup>§</sup>	—	—	—	—	—	—	—	—	
Smallpox <sup>§</sup>	—	—	—	—	—	—	—	—	
Streptococcal toxic-shock syndrome <sup>§</sup>	1	53	4	136	168	142	161	157	VA (1)
Syphilis, congenital (age <1 yr) <sup>§§§</sup>	—	44	7	322	360	377	423	431	
Tetanus	—	7	0	36	36	26	18	19	
Toxic-shock syndrome (staphylococcal) <sup>§</sup>	2	24	1	76	78	82	74	71	NY (2)
Trichinellosis	—	11	0	19	15	7	13	39	
Tularemia	3	12	4	153	166	124	93	123	MO (1), VA (1), AR (1)
Typhoid fever	1	86	7	346	390	467	397	449	FL (1)
Vancomycin-intermediate <i>Staphylococcus aureus</i> <sup>§</sup>	3	58	1	140	82	91	78	63	MO (2), VA (1)
Vancomycin-resistant <i>Staphylococcus aureus</i> <sup>§</sup>	—	—	—	1	—	2	1	—	
Vibriosis (noncholera <i>Vibrio</i> species infections) <sup>§</sup>	8	121	10	1,012	832	846	789	588	OH (3), FL (3), NV (1), CA (1)
Viral hemorrhagic fever <sup>¶¶¶</sup>	—	—	—	—	—	1	NN	NN	
Yellow fever	—	—	—	—	—	—	—	—	

See Table 1 footnotes on next page.

**TABLE I. (Continued) Provisional cases of infrequently reported notifiable diseases (<1,000 cases reported during the preceding year) — United States, week ending May 18, 2013 (20th week)\***

—: No reported cases. N: Not reportable. NN: Not Nationally Notifiable. Cum: Cumulative year-to-date counts.  
 \* Case counts for reporting year 2012 and 2013 are provisional and subject to change. For further information on interpretation of these data, see <http://www.cdc.gov/nndss/document/ProvisionalNationalNotifiableDiseasesSurveillanceData20100927.pdf>.  
 † Calculated by summing the incidence counts for the current week, the 2 weeks preceding the current week, and the 2 weeks following the current week, for a total of 5 preceding years. The total sum of incident cases is then divided by 25 weeks. Additional information is available at <http://www.cdc.gov/nndss/document/5yearweeklyaverage.pdf>.  
 ‡ Not reportable in all states. Data from states where the condition is not reportable are excluded from this table except starting in 2007 for the arboviral diseases, STD data, TB data, and influenza-associated pediatric mortality, and in 2003 for SARS-CoV. Reporting exceptions are available at [http://www.cdc.gov/nndss/document/SRCA\\_FINAL\\_REPORT\\_2006-2012\\_final.xlsx](http://www.cdc.gov/nndss/document/SRCA_FINAL_REPORT_2006-2012_final.xlsx).  
 ¶ Includes both neuroinvasive and nonneuroinvasive. Updated weekly from reports to the Division of Vector-Borne Infectious Diseases, National Center for Zoonotic, Vector-Borne, and Enteric Diseases (ArboNET Surveillance). Data for West Nile virus are available in Table II.  
 \*\* Data for *H. influenzae* (all ages, all serotypes) are available in Table II.  
 †† Updated weekly from reports to the Influenza Division, National Center for Immunization and Respiratory Diseases. Since September 30, 2012, 146 influenza-associated pediatric deaths occurring during the 2012-13 influenza season have been reported. One influenza-associated pediatric death occurring during the 2010-11 influenza season has been reported from Kansas.  
 ‡‡ The four measles cases reported for the current week were indigenous.  
 ¶¶ Data for meningococcal disease (all serogroups) are available in Table II.  
 \*\*\* CDC discontinued reporting of individual confirmed and probable cases of 2009 pandemic influenza A (H1N1) virus infections on July 24, 2009. During 2009, four cases of human infection with novel influenza A viruses, different from the 2009 pandemic influenza A (H1N1) strain, were reported to CDC. The four cases of novel influenza A virus infection reported to CDC during 2010, the fourteen cases reported during 2011, and the 313 cases reported in 2012 are different from the 2009 pandemic influenza A (H1N1) virus. Total case counts are provided by the Influenza Division, National Center for Immunization and Respiratory Diseases (NCIRD).  
 ††† The one rubella case reported for the current week was unknown.  
 §§§ Updated weekly from reports to the Division of STD Prevention, National Center for HIV/AIDS, Viral Hepatitis, STD, and TB Prevention.  
 ¶¶¶ There were no cases of viral hemorrhagic fever reported during the current week. See Table II for dengue hemorrhagic fever.

**FIGURE I. Selected notifiable disease reports, United States, comparison of provisional 4-week totals May 18, 2013, with historical data**



\* Ratio of current 4-week total to mean of 15 4-week totals (from previous, comparable, and subsequent 4-week periods for the past 5 years). The point where the hatched area begins is based on the mean and two standard deviations of these 4-week totals.

**Notifiable Disease Data Team and 122 Cities Mortality Data Team**  
 Jeffrey Kriseman  
 Deborah A. Adams      Willie J. Anderson  
 Lenee Blanton          Rosaline Dhara  
 Diana Harris Onweh      Alan W. Schley  
 Pearl C. Sharp

Morbidity and Mortality Weekly Report

TABLE II. Provisional cases of selected notifiable diseases, United States, weeks ending May 18, 2013, and May 19, 2012 (20th week)\*

Reporting area	<i>Chlamydia trachomatis</i> infection					Coccidioidomycosis					Cryptosporidiosis				
	Current week	Previous 52 weeks		Cum 2013	Cum 2012	Current week	Previous 52 weeks		Cum 2013	Cum 2012	Current week	Previous 52 weeks		Cum 2013	Cum 2012
		Med	Max				Med	Max				Med	Max		
<b>United States</b>	13,107	26,189	30,121	496,874	537,845	90	240	473	2,559	8,204	48	113	302	1,602	2,431
<b>New England</b>	627	933	1,340	16,719	18,678	—	0	1	1	1	4	7	19	71	109
Connecticut	—	240	560	3,806	4,831	N	0	0	N	N	—	0	3	5	14
Maine	—	63	102	809	1,287	N	0	0	N	N	2	1	4	11	17
Massachusetts	615	458	706	8,848	8,874	—	0	0	—	—	2	2	8	35	49
New Hampshire	5	57	83	1,014	1,276	—	0	1	1	—	—	1	4	9	13
Rhode Island	—	78	160	1,575	1,878	—	0	0	—	1	—	0	3	1	3
Vermont	7	33	110	667	532	N	0	0	N	N	—	1	6	10	13
<b>Mid. Atlantic</b>	2,459	3,514	4,482	68,908	71,451	—	0	1	—	3	8	12	41	157	213
New Jersey	198	539	647	10,478	10,867	N	0	0	N	N	—	1	4	8	12
New York (Upstate)	810	735	1,909	13,626	13,376	N	0	0	N	N	2	3	16	41	33
New York City	535	1,177	1,315	21,492	25,654	N	0	0	N	N	—	2	8	16	35
Pennsylvania	916	1,056	1,993	23,312	21,554	—	0	1	—	3	6	6	20	92	133
<b>E.N. Central</b>	1,226	4,246	4,755	70,391	85,868	1	1	3	9	22	9	25	110	346	597
Illinois	35	1,256	1,482	16,094	26,383	N	0	0	N	N	—	3	8	35	65
Indiana	149	572	838	10,120	10,832	N	0	0	N	N	—	2	6	33	74
Michigan	437	901	1,303	16,212	18,625	1	0	2	4	13	—	5	40	61	105
Ohio	319	1,041	1,210	18,999	20,621	—	0	2	3	8	5	8	28	111	194
Wisconsin	286	461	555	8,966	9,407	—	0	1	2	1	4	7	43	106	159
<b>W.N. Central</b>	115	1,539	1,794	24,487	31,976	—	2	7	14	74	1	15	60	214	409
Iowa	22	211	256	3,682	4,638	N	0	0	N	N	—	5	22	66	102
Kansas	11	208	256	3,619	4,442	N	0	0	N	N	—	2	6	26	48
Minnesota	—	341	436	4,315	6,771	—	1	6	11	61	—	4	21	—	101
Missouri	82	538	645	9,613	10,786	—	0	1	3	5	1	4	12	56	73
Nebraska	—	113	185	1,141	2,754	—	0	0	—	1	—	1	10	29	31
North Dakota	—	55	74	745	1,082	—	0	2	—	7	—	0	4	7	13
South Dakota	—	76	109	1,372	1,503	N	0	0	N	N	—	2	6	30	41
<b>S. Atlantic</b>	4,176	5,397	6,524	104,385	113,480	—	0	1	1	3	8	18	54	332	442
Delaware	85	92	322	2,072	1,466	—	0	1	—	—	—	0	2	2	7
District of Columbia	88	129	284	2,861	2,803	—	0	0	—	—	N	0	0	N	N
Florida	921	1,524	1,777	29,389	30,692	N	0	0	N	N	5	8	24	108	170
Georgia	810	956	1,246	17,547	21,501	N	0	0	N	N	1	5	14	86	111
Maryland	—	466	1,211	6,620	8,306	—	0	1	1	3	2	1	5	21	36
North Carolina	949	992	1,770	19,868	21,775	N	0	0	N	N	—	0	28	49	35
South Carolina	589	505	872	10,622	10,779	N	0	0	N	N	—	1	4	24	28
Virginia	645	642	1,018	13,459	14,334	N	0	0	N	N	—	2	7	37	51
West Virginia	89	93	149	1,947	1,824	N	0	0	N	N	—	0	3	5	4
<b>E.S. Central</b>	922	1,952	2,545	35,105	41,039	—	0	0	—	—	3	4	14	81	106
Alabama	—	566	871	10,825	12,008	N	0	0	N	N	1	2	6	37	40
Kentucky	382	329	773	6,524	6,212	N	0	0	N	N	1	1	4	16	16
Mississippi	343	371	678	7,544	9,688	N	0	0	N	N	—	0	4	13	16
Tennessee	197	606	735	10,212	13,131	N	0	0	N	N	1	1	4	15	34
<b>W.S. Central</b>	389	3,104	8,242	67,278	52,939	—	0	1	2	—	2	10	46	145	156
Arkansas	339	328	394	6,482	6,589	N	0	0	N	N	1	0	5	8	12
Louisiana	—	462	2,110	5,584	7,208	—	0	1	2	—	—	3	8	53	43
Oklahoma	50	128	5,044	7,283	5,072	N	0	0	N	N	1	1	13	20	29
Texas	—	1,863	2,983	47,929	34,070	N	0	0	N	N	—	5	28	64	72
<b>Mountain</b>	1,304	1,758	2,048	31,253	36,715	68	174	398	1,732	6,178	7	11	48	123	200
Arizona	305	527	755	7,749	11,953	67	169	394	1,690	6,083	—	1	4	10	11
Colorado	570	419	584	8,323	8,426	N	0	0	N	N	—	1	7	6	25
Idaho	—	85	198	1,592	1,750	N	0	0	N	N	5	3	25	36	41
Montana	53	70	108	1,371	1,560	—	0	1	1	2	2	1	5	21	34
Nevada	216	218	325	4,331	4,336	1	1	6	25	49	—	0	2	7	8
New Mexico	94	214	401	4,851	4,910	—	0	3	8	21	—	1	4	9	46
Utah	66	145	179	2,605	2,993	—	0	4	6	21	—	2	22	33	23
Wyoming	—	36	67	431	787	—	0	1	2	2	—	0	4	1	12
<b>Pacific</b>	1,889	4,119	5,230	78,348	85,699	21	63	89	800	1,923	6	11	25	133	199
Alaska	30	105	149	2,131	2,190	N	0	0	N	N	—	0	1	—	2
California	1,078	3,187	4,238	59,715	65,971	21	63	89	799	1,923	4	6	14	79	98
Hawaii	1	123	153	2,068	2,362	N	0	0	N	N	—	0	1	—	2
Oregon	466	260	378	5,680	5,647	—	0	1	1	—	1	3	10	32	73
Washington	314	470	632	8,754	9,529	—	0	7	—	—	1	1	16	22	24
<b>Territories</b>															
American Samoa	—	12	59	—	—	N	0	0	N	N	N	0	0	N	N
C.N.M.I.	—	—	—	—	—	—	—	—	—	—	—	—	—	—	—
Guam	—	—	—	—	—	—	—	—	—	—	—	—	—	—	—
Puerto Rico	154	108	307	2,258	2,708	N	0	0	N	N	N	0	0	N	N
U.S. Virgin Islands	—	14	25	159	301	—	0	0	—	—	—	0	0	—	—

C.N.M.I.: Commonwealth of Northern Mariana Islands.

U: Unavailable. —: No reported cases. N: Not reportable. NN: Not Nationally Notifiable. Cum: Cumulative year-to-date counts. Med: Median. Max: Maximum.

\* Case counts for reporting year 2012 and 2013 are provisional and subject to change. For further information on interpretation of these data, see <http://www.cdc.gov/nndss/document/ProvisionalNationalNotifiableDiseasesSurveillanceData20100927.pdf>. Data for TB are displayed in Table IV, which appears quarterly.

Morbidity and Mortality Weekly Report

TABLE II. (Continued) Provisional cases of selected notifiable diseases, United States, weeks ending May 18, 2013, and May 19, 2012 (20th week)\*

Reporting area	Dengue Virus Infection									
	Dengue Fever <sup>†</sup>					Dengue Hemorrhagic Fever <sup>§</sup>				
	Current week	Previous 52 weeks		Cum 2013	Cum 2012	Current week	Previous 52 weeks		Cum 2013	Cum 2012
	Med	Max				Med	Max			
<b>United States</b>	—	11	31	82	73	—	0	1	—	—
<b>New England</b>	—	0	3	5	3	—	0	0	—	—
Connecticut	—	0	3	3	2	—	0	0	—	—
Maine	—	0	0	—	—	—	0	0	—	—
Massachusetts	—	0	0	—	—	—	0	0	—	—
New Hampshire	—	0	1	1	—	—	0	0	—	—
Rhode Island	—	0	0	—	—	—	0	0	—	—
Vermont	—	0	1	1	1	—	0	0	—	—
<b>Mid. Atlantic</b>	—	3	8	27	22	—	0	0	—	—
New Jersey	—	0	0	—	—	—	0	0	—	—
New York (Upstate)	—	0	3	—	5	—	0	0	—	—
New York City	—	2	7	20	11	—	0	0	—	—
Pennsylvania	—	0	2	7	6	—	0	0	—	—
<b>E.N. Central</b>	—	1	3	6	14	—	0	1	—	—
Illinois	—	0	3	—	6	—	0	1	—	—
Indiana	—	0	2	—	1	—	0	0	—	—
Michigan	—	0	1	—	2	—	0	0	—	—
Ohio	—	0	1	3	1	—	0	0	—	—
Wisconsin	—	0	1	3	4	—	0	0	—	—
<b>W.N. Central</b>	—	0	2	1	2	—	0	1	—	—
Iowa	—	0	1	—	1	—	0	0	—	—
Kansas	—	0	1	1	—	—	0	0	—	—
Minnesota	—	0	2	—	1	—	0	0	—	—
Missouri	—	0	1	—	—	—	0	1	—	—
Nebraska	—	0	0	—	—	—	0	0	—	—
North Dakota	—	0	0	—	—	—	0	0	—	—
South Dakota	—	0	1	—	—	—	0	0	—	—
<b>S. Atlantic</b>	—	3	12	32	17	—	0	0	—	—
Delaware	—	0	0	—	—	—	0	0	—	—
District of Columbia	—	0	0	—	—	—	0	0	—	—
Florida	—	2	9	29	13	—	0	0	—	—
Georgia	—	0	2	—	—	—	0	0	—	—
Maryland	—	0	2	1	1	—	0	0	—	—
North Carolina	—	0	1	2	—	—	0	0	—	—
South Carolina	—	0	0	—	2	—	0	0	—	—
Virginia	—	0	2	—	1	—	0	0	—	—
West Virginia	—	0	0	—	—	—	0	0	—	—
<b>E.S. Central</b>	—	0	2	3	1	—	0	0	—	—
Alabama	—	0	2	—	1	—	0	0	—	—
Kentucky	—	0	1	—	—	—	0	0	—	—
Mississippi	—	0	1	1	—	—	0	0	—	—
Tennessee	—	0	2	2	—	—	0	0	—	—
<b>W.S. Central</b>	—	0	2	4	1	—	0	0	—	—
Arkansas	—	0	0	—	—	—	0	0	—	—
Louisiana	—	0	1	1	—	—	0	0	—	—
Oklahoma	—	0	1	—	—	—	0	0	—	—
Texas	—	0	2	3	1	—	0	0	—	—
<b>Mountain</b>	—	0	2	—	—	—	0	0	—	—
Arizona	—	0	2	—	—	—	0	0	—	—
Colorado	—	0	0	—	—	—	0	0	—	—
Idaho	—	0	1	—	—	—	0	0	—	—
Montana	—	0	1	—	—	—	0	0	—	—
Nevada	—	0	1	—	—	—	0	0	—	—
New Mexico	—	0	0	—	—	—	0	0	—	—
Utah	—	0	0	—	—	—	0	0	—	—
Wyoming	—	0	0	—	—	—	0	0	—	—
<b>Pacific</b>	—	1	7	4	13	—	0	1	—	—
Alaska	—	0	1	1	—	—	0	0	—	—
California	—	1	5	—	9	—	0	0	—	—
Hawaii	—	0	2	—	2	—	0	0	—	—
Oregon	—	0	0	—	—	—	0	0	—	—
Washington	—	0	2	3	2	—	0	1	—	—
<b>Territories</b>										
American Samoa	—	0	0	—	—	—	0	0	—	—
C.N.M.I.	—	—	—	—	—	—	—	—	—	—
Guam	—	—	—	—	—	—	—	—	—	—
Puerto Rico	—	114	343	2,555	326	—	0	3	18	6
U.S. Virgin Islands	—	0	42	—	—	—	0	1	—	—

C.N.M.I.: Commonwealth of Northern Mariana Islands.

U: Unavailable. —: No reported cases. N: Not reportable. NN: Not Nationally Notifiable. Cum: Cumulative year-to-date counts. Med: Median. Max: Maximum.

\* Case counts for reporting year 2012 and 2013 are provisional and subject to change. For further information on interpretation of these data, see <http://www.cdc.gov/nndss/document/ProvisionalNationalNotifiableDiseasesSurveillanceData20100927.pdf>. Data for TB are displayed in Table IV, which appears quarterly.

† Dengue Fever includes cases that meet criteria for Dengue Fever with hemorrhage, other clinical and unknown case classifications.

§ DHF includes cases that meet criteria for dengue shock syndrome (DSS), a more severe form of DHF.

Morbidity and Mortality Weekly Report

TABLE II. (Continued) Provisional cases of selected notifiable diseases, United States, weeks ending May 18, 2013, and May 19, 2012 (20th week)\*

Reporting area	Ehrlichiosis/Anaplasmosis†														
	<i>Ehrlichia chaffeensis</i>					<i>Anaplasma phagocytophilum</i>					Undetermined				
	Current week	Previous 52 weeks		Cum 2013	Cum 2012	Current week	Previous 52 weeks		Cum 2013	Cum 2012	Current week	Previous 52 weeks		Cum 2013	Cum 2012
	Med	Max				Med	Max				Med	Max			
<b>United States</b>	5	7	69	43	146	5	24	114	49	519	—	2	23	6	47
<b>New England</b>	1	0	4	5	3	1	4	23	11	120	—	0	0	—	—
Connecticut	—	0	0	—	—	—	0	11	1	67	—	0	0	—	—
Maine	—	0	1	—	—	1	0	4	6	14	—	0	0	—	—
Massachusetts	—	0	0	—	—	—	0	0	—	—	—	0	0	—	—
New Hampshire	—	0	1	1	—	—	0	4	2	16	—	0	0	—	—
Rhode Island	1	0	3	3	3	—	1	11	2	19	—	0	0	—	—
Vermont	—	0	1	1	—	—	0	1	—	4	—	0	0	—	—
<b>Mid. Atlantic</b>	—	1	28	3	24	3	6	53	13	93	—	0	7	2	2
New Jersey	—	0	6	—	16	—	1	9	—	36	—	0	1	—	—
New York (Upstate)	—	0	28	1	4	3	3	52	11	49	—	0	5	1	1
New York City	—	0	3	2	3	—	0	4	2	7	—	0	1	1	—
Pennsylvania	—	0	1	—	1	—	0	2	—	1	—	0	2	—	1
<b>E.N. Central</b>	—	0	5	2	13	1	4	42	14	173	—	1	15	4	28
Illinois	—	0	4	1	9	—	0	1	1	4	—	0	1	—	—
Indiana	—	0	0	—	—	—	0	0	—	—	—	0	7	2	9
Michigan	—	0	1	—	—	—	0	0	—	—	—	0	2	1	3
Ohio	—	0	1	1	—	1	0	1	2	—	—	0	1	—	—
Wisconsin	—	0	3	—	4	—	4	42	11	169	—	0	6	1	16
<b>W.N. Central</b>	2	1	21	5	44	—	3	43	—	117	—	0	5	—	7
Iowa	N	0	0	N	N	N	0	0	N	N	N	0	0	N	N
Kansas	—	0	4	1	13	—	0	1	—	—	—	0	0	—	—
Minnesota	—	0	2	—	3	—	3	42	—	114	—	0	2	—	4
Missouri	2	1	20	3	28	—	0	6	—	3	—	0	3	—	3
Nebraska	—	0	0	—	—	—	0	1	—	—	—	0	0	—	—
North Dakota	—	0	0	—	—	—	0	1	—	—	—	0	0	—	—
South Dakota	—	0	1	1	—	—	0	0	—	—	—	0	1	—	—
<b>S. Atlantic</b>	—	3	32	15	37	—	1	7	10	7	—	0	2	—	3
Delaware	—	0	2	1	3	—	0	1	—	—	—	0	0	—	—
District of Columbia	N	0	0	N	N	N	0	0	N	N	N	0	0	N	N
Florida	—	0	3	2	8	—	0	2	1	—	—	0	0	—	—
Georgia	—	0	4	7	5	—	0	1	2	3	—	0	1	—	1
Maryland	—	0	4	—	4	—	0	2	1	—	—	0	0	—	—
North Carolina	—	0	19	1	9	—	0	6	1	1	—	0	0	—	—
South Carolina	—	0	1	—	—	—	0	0	—	—	—	0	0	—	—
Virginia	—	1	15	4	8	—	0	2	4	3	—	0	2	—	2
West Virginia	—	0	0	—	—	—	0	1	1	—	—	0	1	—	—
<b>E.S. Central</b>	2	1	9	7	8	—	0	3	1	7	—	0	1	—	5
Alabama	—	0	1	1	1	—	0	3	—	2	—	0	1	—	3
Kentucky	—	0	4	1	2	—	0	1	—	—	—	0	0	—	—
Mississippi	—	0	1	—	—	—	0	0	—	1	—	0	0	—	—
Tennessee	2	1	6	5	5	—	0	2	1	4	—	0	1	—	2
<b>W.S. Central</b>	—	0	16	6	17	—	0	2	—	2	—	0	1	—	—
Arkansas	—	0	10	6	15	—	0	1	—	1	—	0	0	—	—
Louisiana	—	0	0	—	1	—	0	0	—	—	—	0	1	—	—
Oklahoma	—	0	14	—	—	—	0	2	—	—	—	0	0	—	—
Texas	—	0	1	—	1	—	0	0	—	1	—	0	0	—	—
<b>Mountain</b>	—	0	0	—	—	—	0	0	—	—	—	0	1	—	1
Arizona	—	0	0	—	—	—	0	0	—	—	—	0	0	—	1
Colorado	N	0	0	N	N	N	0	0	N	N	N	0	0	N	N
Idaho	N	0	0	N	N	N	0	0	N	N	N	0	0	N	N
Montana	N	0	0	N	N	N	0	0	N	N	N	0	0	N	N
Nevada	—	0	0	—	—	—	0	0	—	—	—	0	0	—	—
New Mexico	N	0	0	N	N	N	0	0	N	N	N	0	0	N	N
Utah	—	0	0	—	—	—	0	0	—	—	—	0	1	—	—
Wyoming	—	0	0	—	—	—	0	0	—	—	—	0	0	—	—
<b>Pacific</b>	—	0	0	—	—	—	0	0	—	—	—	0	1	—	1
Alaska	N	0	0	N	N	N	0	0	N	N	N	0	0	N	N
California	—	0	0	—	—	—	0	0	—	—	—	0	1	—	1
Hawaii	N	0	0	N	N	N	0	0	N	N	N	0	0	N	N
Oregon	—	0	0	—	—	—	0	0	—	—	—	0	0	—	—
Washington	—	0	0	—	—	—	0	0	—	—	—	0	0	—	—
<b>Territories</b>															
American Samoa	N	0	0	N	N	N	0	0	N	N	N	0	0	N	N
C.N.M.I.	—	—	—	—	—	—	—	—	—	—	—	—	—	—	—
Guam	N	—	—	N	N	N	—	—	N	N	N	—	—	N	N
Puerto Rico	N	0	0	N	N	N	0	0	N	N	N	0	0	N	N
U.S. Virgin Islands	—	0	0	—	—	—	0	0	—	—	—	0	0	—	—

C.N.M.I.: Commonwealth of Northern Mariana Islands.

U: Unavailable. —: No reported cases. N: Not reportable. NN: Not Nationally Notifiable. Cum: Cumulative year-to-date counts. Med: Median. Max: Maximum.

\* Case counts for reporting year 2012 and 2013 are provisional and subject to change. For further information on interpretation of these data, see <http://www.cdc.gov/nndss/document/ProvisionalNationalNotifiableDiseasesSurveillanceData20100927.pdf>. Data for TB are displayed in Table IV, which appears quarterly.

† Cumulative total *E. ewingii* cases reported for year 2012 = 16, and 1 cases reported for 2013.

Morbidity and Mortality Weekly Report

TABLE II. (Continued) Provisional cases of selected notifiable diseases, United States, weeks ending May 18, 2013, and May 19, 2012 (20th week)\*

Reporting area	Giardiasis					Gonorrhea					<i>Haemophilus influenzae</i> , invasive† All ages, all serotypes				
	Current week	Previous 52 weeks		Cum 2013	Cum 2012	Current week	Previous 52 weeks		Cum 2013	Cum 2012	Current week	Previous 52 weeks		Cum 2013	Cum 2012
		Med	Max				Med	Max				Med	Max		
<b>United States</b>	133	255	428	4,066	4,788	2,888	6,184	7,576	114,016	119,711	46	62	190	1,431	1,542
<b>New England</b>	9	25	53	357	428	68	115	169	2,076	2,102	1	3	21	78	93
Connecticut	—	4	9	54	85	—	43	84	720	747	—	1	4	17	23
Maine	4	3	10	52	47	—	7	18	73	162	—	0	2	11	11
Massachusetts	5	13	26	197	218	67	53	99	1,074	905	1	2	6	45	52
New Hampshire	—	1	6	16	31	1	3	9	49	56	—	0	0	—	2
Rhode Island	—	0	7	12	20	—	8	24	121	201	—	0	11	—	5
Vermont	—	3	10	26	27	—	2	12	39	31	—	0	1	5	—
<b>Mid. Atlantic</b>	32	47	90	679	945	533	859	1,091	15,798	17,106	10	13	59	241	295
New Jersey	—	7	21	49	123	44	141	192	2,542	2,925	—	2	10	39	54
New York (Upstate)	17	15	66	197	236	159	143	519	2,416	2,412	4	3	35	65	76
New York City	7	15	27	244	362	116	275	351	4,873	5,657	1	3	7	46	80
Pennsylvania	8	12	24	189	224	214	285	561	5,967	6,112	5	4	13	91	85
<b>E.N. Central</b>	22	36	74	558	800	304	1,136	1,440	18,011	21,317	8	9	19	194	270
Illinois	—	6	15	74	124	9	337	428	3,987	6,486	—	3	10	53	74
Indiana	—	3	10	44	99	38	150	208	2,527	2,512	—	2	5	40	52
Michigan	—	7	21	117	208	106	230	378	3,892	4,626	1	1	5	31	41
Ohio	21	11	22	210	201	86	322	391	5,880	5,931	7	3	8	68	72
Wisconsin	1	8	25	113	168	65	89	151	1,725	1,762	—	0	4	2	31
<b>W.N. Central</b>	8	25	60	257	515	40	335	436	5,070	6,526	6	5	10	102	103
Iowa	3	4	11	59	89	2	34	54	520	801	—	0	0	—	—
Kansas	—	2	7	22	41	1	37	58	558	918	—	1	3	25	12
Minnesota	—	9	26	—	189	—	60	94	924	987	—	1	4	18	40
Missouri	4	7	14	89	85	37	152	194	2,546	2,981	5	1	7	44	33
Nebraska	1	3	11	56	61	—	24	43	236	516	1	0	2	11	12
North Dakota	—	1	4	8	15	—	6	12	90	108	—	0	1	3	6
South Dakota	—	2	9	23	35	—	13	26	196	215	—	0	1	1	—
<b>S. Atlantic</b>	15	46	74	818	858	1,097	1,357	1,670	26,270	29,057	8	16	37	413	361
Delaware	—	0	2	2	7	34	19	49	460	351	—	0	2	5	3
District of Columbia	—	0	5	—	23	34	43	92	938	998	—	0	2	6	1
Florida	14	21	56	429	373	251	381	478	7,415	7,516	6	5	13	126	98
Georgia	—	9	27	186	218	212	282	374	4,862	6,001	1	4	12	81	80
Maryland	—	5	10	80	90	—	100	241	1,404	1,810	1	2	5	38	37
North Carolina	N	0	0	N	N	268	268	544	5,436	6,434	—	2	12	59	44
South Carolina	—	2	5	38	45	151	138	216	2,765	2,914	—	2	11	60	39
Virginia	1	5	16	73	81	128	130	214	2,647	2,772	—	1	8	28	45
West Virginia	—	1	5	10	21	19	17	32	343	261	—	0	3	10	14
<b>E.S. Central</b>	3	3	13	55	58	213	552	786	9,576	11,057	2	4	12	124	105
Alabama	3	3	13	55	58	—	169	257	3,060	3,435	1	1	7	42	26
Kentucky	N	0	0	N	N	97	83	210	1,644	1,498	—	0	4	19	20
Mississippi	N	0	0	N	N	79	123	205	2,235	2,627	—	0	2	14	13
Tennessee	N	0	0	N	N	37	165	239	2,637	3,497	1	2	7	49	46
<b>W.S. Central</b>	4	6	17	101	90	95	810	2,381	17,126	13,604	6	3	21	75	71
Arkansas	4	2	8	31	26	77	80	122	1,555	1,713	—	0	4	12	11
Louisiana	—	4	11	70	64	—	125	657	1,517	2,470	—	1	5	16	24
Oklahoma	—	0	0	—	—	18	36	1,325	1,869	1,377	6	2	18	46	35
Texas	N	0	0	N	N	—	477	779	12,185	8,044	—	0	1	1	1
<b>Mountain</b>	3	19	48	247	350	135	260	326	4,277	4,679	1	5	12	122	162
Arizona	1	2	5	28	41	47	104	160	1,446	2,014	—	2	6	58	58
Colorado	—	6	15	46	107	35	58	100	1,102	965	—	1	3	15	33
Idaho	—	3	10	38	49	—	2	8	28	52	—	0	2	6	7
Montana	—	1	4	13	17	2	2	8	65	36	—	0	1	1	3
Nevada	—	2	5	25	24	40	47	79	903	739	1	0	1	10	13
New Mexico	1	2	7	31	26	6	33	60	521	709	—	1	3	18	28
Utah	1	5	15	47	69	5	10	19	204	145	—	0	2	13	18
Wyoming	—	0	6	19	17	—	0	2	8	19	—	0	1	1	2
<b>Pacific</b>	37	52	99	994	744	403	815	942	15,812	14,263	4	3	8	82	82
Alaska	1	2	6	20	28	8	16	32	342	249	1	0	2	6	5
California	25	31	54	701	458	302	683	776	13,143	12,088	—	1	2	17	31
Hawaii	—	1	3	13	9	—	16	27	264	259	1	0	2	11	10
Oregon	2	7	14	113	138	34	30	46	627	564	2	1	5	45	36
Washington	9	10	61	147	111	59	70	99	1,436	1,103	—	0	3	3	—
<b>Territories</b>															
American Samoa	—	0	0	—	—	—	0	0	—	—	—	0	0	—	—
C.N.M.I.	—	—	—	—	—	—	—	—	—	—	—	—	—	—	—
Guam	—	—	—	—	—	—	—	—	—	—	—	—	—	—	—
Puerto Rico	—	0	1	—	1	1	6	24	109	114	—	0	0	—	—
U.S. Virgin Islands	—	0	0	—	—	—	1	8	10	61	—	0	0	—	—

C.N.M.I.: Commonwealth of Northern Mariana Islands.

U: Unavailable. —: No reported cases. N: Not reportable. NN: Not Nationally Notifiable. Cum: Cumulative year-to-date counts. Med: Median. Max: Maximum.

\* Case counts for reporting year 2012 and 2013 are provisional and subject to change. For further information on interpretation of these data, see <http://www.cdc.gov/nndss/document/ProvisionalNationalNotifiableDiseasesSurveillanceData20100927.pdf>. Data for TB are displayed in Table IV, which appears quarterly.

† Data for *H. influenzae* (age <5 yrs for serotype b, nonserotype b, and unknown serotype) are available in Table I.

Morbidity and Mortality Weekly Report

TABLE II. (Continued) Provisional cases of selected notifiable diseases, United States, weeks ending May 18, 2013, and May 19, 2012 (20th week)\*

Reporting area	Hepatitis (viral, acute), by type														
	A					B					C				
	Current week	Previous 52 weeks		Cum 2013	Cum 2012	Current week	Previous 52 weeks		Cum 2013	Cum 2012	Current week	Previous 52 weeks		Cum 2013	Cum 2012
	Med	Max				Med	Max				Med	Max			
<b>United States</b>	13	26	69	451	627	15	52	104	863	1,078	16	31	91	462	656
<b>New England</b>	—	1	6	25	35	—	1	6	20	39	—	1	4	4	44
Connecticut	—	0	2	7	9	—	0	2	—	7	—	0	2	—	20
Maine	—	0	2	3	5	—	0	1	7	5	—	0	2	1	1
Massachusetts	—	1	4	9	16	—	1	5	13	24	—	0	3	1	20
New Hampshire	—	0	1	3	4	—	0	1	—	1	N	0	0	N	N
Rhode Island	—	0	1	1	1	U	0	0	U	U	U	0	0	U	U
Vermont	—	0	1	2	—	—	0	0	—	2	—	0	1	2	3
<b>Mid. Atlantic</b>	3	4	11	68	95	1	4	9	57	108	3	4	11	59	86
New Jersey	—	1	5	5	23	—	0	4	—	30	—	1	4	9	28
New York (Upstate)	2	1	4	21	31	1	1	6	16	22	2	1	10	31	24
New York City	—	1	4	19	20	—	1	5	25	34	—	0	1	1	7
Pennsylvania	1	1	5	23	21	—	1	4	16	22	1	1	4	18	27
<b>E.N. Central</b>	3	4	14	97	98	2	8	17	149	181	—	4	10	58	102
Illinois	—	1	4	14	33	—	1	4	21	41	—	0	3	9	8
Indiana	—	0	2	4	8	—	1	6	20	42	—	2	7	14	49
Michigan	—	2	7	42	40	—	1	7	26	31	—	1	5	30	25
Ohio	3	1	5	27	8	2	3	10	78	58	—	0	2	4	3
Wisconsin	—	0	2	10	9	—	0	1	4	9	—	0	2	1	17
<b>W.N. Central</b>	—	1	32	13	29	1	1	17	30	35	1	0	32	6	11
Iowa	—	0	2	1	—	—	0	2	4	2	—	0	1	—	2
Kansas	—	0	2	1	5	—	0	3	5	1	—	0	2	1	6
Minnesota	—	0	29	—	—	—	0	17	—	—	—	0	32	—	—
Missouri	—	0	1	4	12	1	1	3	21	28	1	0	1	5	3
Nebraska	—	0	2	5	11	—	0	1	—	4	—	0	1	—	—
North Dakota	—	0	2	2	1	—	0	0	—	—	—	0	0	—	—
South Dakota	—	0	0	—	—	—	0	1	—	—	—	0	2	—	—
<b>S. Atlantic</b>	3	5	16	100	96	5	14	26	248	258	6	7	15	113	141
Delaware	—	0	2	1	2	—	0	1	2	6	U	0	0	U	U
District of Columbia	—	0	0	—	—	—	0	0	—	—	—	0	0	—	—
Florida	1	1	8	27	31	2	5	11	98	89	6	2	5	49	35
Georgia	1	1	4	20	20	—	2	6	42	43	—	1	4	8	38
Maryland	—	0	3	12	10	2	1	4	20	26	—	1	3	19	15
North Carolina	—	1	4	20	10	—	1	5	17	28	—	0	6	14	23
South Carolina	1	0	1	4	3	1	1	4	13	16	—	0	1	—	—
Virginia	—	1	9	15	18	—	1	6	24	15	—	1	6	12	12
West Virginia	—	0	2	1	2	—	2	11	32	35	—	1	5	11	18
<b>E.S. Central</b>	1	1	4	22	27	2	11	21	202	228	3	6	11	125	127
Alabama	—	0	2	1	8	—	1	5	29	30	—	0	2	5	10
Kentucky	1	0	3	13	6	—	3	8	57	75	1	3	8	79	69
Mississippi	—	0	2	1	2	—	1	4	17	31	U	0	0	U	U
Tennessee	—	0	2	7	11	2	5	10	99	92	2	2	7	41	48
<b>W.S. Central</b>	2	2	8	32	63	2	6	39	98	106	—	2	16	33	24
Arkansas	—	0	2	1	3	—	1	4	20	26	—	0	2	4	—
Louisiana	—	0	1	3	—	—	0	4	11	22	—	0	3	5	3
Oklahoma	—	0	4	—	2	1	0	16	15	17	—	1	9	15	8
Texas	2	2	8	28	58	1	3	19	52	41	—	1	5	9	13
<b>Mountain</b>	—	2	7	31	78	—	1	4	18	36	—	1	5	19	60
Arizona	—	1	5	14	41	—	0	2	1	6	U	0	0	U	U
Colorado	—	0	3	1	15	—	0	3	1	11	—	0	3	—	20
Idaho	—	0	2	4	7	—	0	1	2	1	—	0	2	6	7
Montana	—	0	2	1	2	—	0	1	—	—	—	0	3	5	2
Nevada	—	0	1	3	5	—	0	3	12	13	—	0	2	5	7
New Mexico	—	0	1	4	5	—	0	1	1	1	—	0	3	—	12
Utah	—	0	2	4	2	—	0	2	1	4	—	0	1	3	12
Wyoming	—	0	0	—	1	—	0	0	—	—	—	0	0	—	—
<b>Pacific</b>	1	4	9	63	106	2	3	8	41	87	3	2	15	45	61
Alaska	—	0	1	1	1	—	0	1	2	—	—	0	0	—	—
California	—	3	8	38	88	—	2	7	20	63	—	1	6	22	33
Hawaii	—	0	1	4	2	—	0	1	3	3	—	0	0	—	—
Oregon	1	0	2	8	1	—	0	3	9	9	—	0	2	6	20
Washington	—	0	2	12	14	2	0	2	7	12	3	1	15	17	8
<b>Territories</b>															
American Samoa	—	0	0	—	—	—	0	0	—	—	—	0	0	—	—
C.N.M.I.	—	—	—	—	—	—	—	—	—	—	—	—	—	—	—
Guam	—	—	—	—	—	—	—	—	—	—	—	—	—	—	—
Puerto Rico	—	0	0	—	—	—	0	0	—	4	N	0	0	N	N
U.S. Virgin Islands	—	0	0	—	—	—	0	0	—	—	—	0	0	—	—

C.N.M.I.: Commonwealth of Northern Mariana Islands.

U: Unavailable. —: No reported cases. N: Not reportable. NN: Not Nationally Notifiable. Cum: Cumulative year-to-date counts. Med: Median. Max: Maximum.

\* Case counts for reporting year 2012 and 2013 are provisional and subject to change. For further information on interpretation of these data, see <http://www.cdc.gov/nndss/document/ProvisionalNationalNotifiableDiseasesSurveillanceData20100927.pdf>. Data for TB are displayed in Table IV, which appears quarterly.

Morbidity and Mortality Weekly Report

TABLE II. (Continued) Provisional cases of selected notifiable diseases, United States, weeks ending May 18, 2013, and May 19, 2012 (20th week)\*

Reporting area	Legionellosis					Lyme disease					Malaria				
	Current week	Previous 52 weeks		Cum 2013	Cum 2012	Current week	Previous 52 weeks		Cum 2013	Cum 2012	Current week	Previous 52 weeks		Cum 2013	Cum 2012
		Med	Max				Med	Max				Med	Max		
<b>United States</b>	25	66	173	752	833	73	400	1,606	2,995	6,419	10	24	87	298	388
<b>New England</b>	—	5	20	44	41	1	124	710	666	2,250	—	1	11	12	27
Connecticut	—	1	7	5	7	—	36	182	252	713	—	0	2	—	4
Maine	—	0	3	5	3	—	14	69	76	195	—	0	1	1	—
Massachusetts	—	3	11	22	21	1	47	369	189	920	—	0	4	9	21
New Hampshire	—	0	3	2	4	—	14	108	49	320	—	0	2	2	—
Rhode Island	—	0	6	6	5	—	1	44	52	21	—	0	10	—	1
Vermont	—	0	2	4	1	—	8	29	48	81	—	0	1	—	1
<b>Mid. Atlantic</b>	8	15	47	135	189	52	169	611	1,572	2,340	4	7	17	78	88
New Jersey	—	2	14	14	30	—	46	168	503	1,048	—	1	5	15	21
New York (Upstate)	4	5	33	34	63	36	37	239	277	404	1	1	7	16	8
New York City	1	3	13	32	37	—	6	37	6	112	1	4	12	35	48
Pennsylvania	3	4	19	55	59	16	63	342	786	776	2	1	4	12	11
<b>E.N. Central</b>	4	17	68	151	215	—	11	184	79	602	1	2	8	29	44
Illinois	—	2	24	23	38	—	1	18	6	36	—	0	6	8	14
Indiana	—	2	6	38	33	—	1	6	5	17	—	0	2	6	6
Michigan	1	4	22	12	62	—	1	9	7	23	—	0	5	5	8
Ohio	3	5	17	70	66	—	1	6	17	12	1	0	3	9	13
Wisconsin	—	1	7	8	16	—	7	154	44	514	—	0	2	1	3
<b>W.N. Central</b>	—	3	10	34	46	—	11	148	9	334	—	1	7	9	34
Iowa	—	0	2	3	4	—	1	16	4	35	—	0	2	3	1
Kansas	—	0	2	1	4	—	0	2	2	6	—	0	1	3	4
Minnesota	—	1	4	8	14	—	10	130	—	292	—	0	5	—	21
Missouri	—	1	7	10	17	—	0	1	2	—	—	0	2	1	6
Nebraska	—	0	3	10	3	—	0	2	—	—	—	0	1	1	1
North Dakota	—	0	1	—	2	—	0	14	1	—	—	0	1	—	—
South Dakota	—	0	2	2	2	—	0	1	—	1	—	0	2	1	1
<b>S. Atlantic</b>	5	11	27	137	154	20	59	228	615	813	3	6	15	111	104
Delaware	—	0	2	—	9	—	9	30	101	177	—	0	1	—	1
District of Columbia	N	0	0	N	N	N	0	0	N	N	—	0	1	—	2
Florida	3	4	11	61	61	3	2	7	28	32	1	1	3	22	25
Georgia	—	1	4	15	16	—	0	4	10	12	—	1	6	12	15
Maryland	2	2	6	21	23	9	23	97	308	408	2	2	8	48	27
North Carolina	—	1	8	15	15	2	0	33	14	10	—	0	8	8	10
South Carolina	—	0	3	5	6	—	0	3	2	14	—	0	2	2	3
Virginia	—	2	4	19	13	6	19	177	138	151	—	1	4	18	19
West Virginia	—	0	3	1	11	—	1	10	14	9	—	0	1	1	2
<b>E.S. Central</b>	1	2	7	28	39	—	1	5	12	18	1	1	4	11	9
Alabama	—	0	2	4	9	—	0	2	4	9	—	0	2	1	4
Kentucky	—	0	4	4	6	—	0	4	6	4	1	0	2	4	2
Mississippi	—	0	2	4	6	—	0	0	—	1	—	0	1	—	1
Tennessee	1	1	4	16	18	—	0	4	2	4	—	0	2	6	2
<b>W.S. Central</b>	2	4	39	54	49	—	1	22	13	7	—	1	41	14	26
Arkansas	—	0	3	5	4	—	0	0	—	—	—	0	1	1	2
Louisiana	—	0	3	10	8	—	0	1	—	1	—	0	2	2	2
Oklahoma	—	0	9	—	5	—	0	0	—	—	—	0	4	2	6
Texas	2	3	27	39	32	—	1	22	13	6	—	1	39	9	16
<b>Mountain</b>	3	2	7	37	37	—	0	5	7	7	1	1	6	6	17
Arizona	—	1	4	9	14	—	0	3	—	2	—	0	3	1	1
Colorado	—	0	3	5	8	—	0	0	—	—	—	0	3	—	4
Idaho	—	0	2	3	2	—	0	3	5	2	1	0	1	1	3
Montana	2	0	1	4	1	—	0	2	—	—	—	0	0	—	—
Nevada	1	0	2	5	5	—	0	2	1	1	—	0	1	3	4
New Mexico	—	0	2	5	1	—	0	1	—	—	—	0	1	—	1
Utah	—	0	5	6	5	—	0	1	1	1	—	0	2	1	4
Wyoming	—	0	1	—	1	—	0	1	—	1	—	0	0	—	—
<b>Pacific</b>	2	4	24	132	63	—	2	8	22	48	—	2	7	28	39
Alaska	—	0	1	—	—	—	0	1	1	4	—	0	1	1	2
California	2	3	22	112	45	—	1	4	7	25	—	1	5	19	31
Hawaii	—	0	1	2	—	N	0	0	N	N	—	0	1	1	1
Oregon	—	0	3	8	13	—	0	6	13	18	—	0	2	—	1
Washington	—	0	7	10	5	—	0	4	1	1	—	0	3	7	4
<b>Territories</b>															
American Samoa	N	0	0	N	N	N	0	0	N	N	—	0	0	—	—
C.N.M.I.	—	—	—	—	—	—	—	—	—	—	—	—	—	—	—
Guam	—	—	—	—	—	—	—	—	—	—	—	—	—	—	—
Puerto Rico	—	0	0	—	—	N	0	0	N	N	—	0	0	—	—
U.S. Virgin Islands	—	0	0	—	—	N	0	0	N	N	—	0	0	—	—

C.N.M.I.: Commonwealth of Northern Mariana Islands.

U: Unavailable. —: No reported cases. N: Not reportable. NN: Not Nationally Notifiable. Cum: Cumulative year-to-date counts. Med: Median. Max: Maximum.

\* Case counts for reporting year 2012 and 2013 are provisional and subject to change. For further information on interpretation of these data, see <http://www.cdc.gov/nndss/document/ProvisionalNationalNotifiableDiseasesSurveillanceData20100927.pdf>. Data for TB are displayed in Table IV, which appears quarterly.



Morbidity and Mortality Weekly Report

TABLE II. (Continued) Provisional cases of selected notifiable diseases, United States, weeks ending May 18, 2013, and May 19, 2012 (20th week)\*

Reporting area	Meningococcal disease, invasive† All serogroups					Mumps					Pertussis				
	Current week	Previous 52 weeks		Cum 2013	Cum 2012	Current week	Previous 52 weeks		Cum 2013	Cum 2012	Current week	Previous 52 weeks		Cum 2013	Cum 2012
		Med	Max				Med	Max				Med	Max		
<b>United States</b>	4	11	32	254	261	—	5	37	202	93	184	791	1,408	6,321	15,001
<b>New England</b>	—	0	3	8	2	—	0	6	22	3	11	49	100	345	482
Connecticut	—	0	1	2	—	—	0	2	4	—	—	2	9	8	61
Maine	—	0	1	1	—	—	0	1	1	—	5	14	37	121	75
Massachusetts	—	0	2	3	2	—	0	6	17	3	6	12	29	90	156
New Hampshire	—	0	1	1	—	—	0	1	—	—	—	4	18	27	41
Rhode Island	—	0	1	1	—	—	0	1	—	—	—	1	20	15	18
Vermont	—	0	1	—	—	—	0	0	—	—	—	8	42	84	131
<b>Mid. Atlantic</b>	1	1	6	35	39	—	0	4	12	14	26	95	214	580	2,007
New Jersey	—	0	2	6	8	—	0	1	1	—	—	19	60	75	430
New York (Upstate)	1	0	2	11	9	—	0	1	1	1	13	36	120	262	769
New York City	—	0	2	5	12	—	0	3	6	11	—	5	19	28	198
Pennsylvania	—	0	3	13	10	—	0	2	4	2	13	29	73	215	610
<b>E.N. Central</b>	—	1	3	19	34	—	1	3	14	26	20	144	373	1,100	4,586
Illinois	—	0	2	3	10	—	0	2	7	14	—	29	66	189	848
Indiana	—	0	1	5	1	—	0	2	1	2	—	9	18	67	87
Michigan	—	0	2	3	8	—	0	1	—	5	1	11	40	147	215
Ohio	—	0	2	5	12	—	0	2	6	2	17	17	37	324	292
Wisconsin	—	0	2	3	3	—	0	1	—	3	2	73	270	373	3,144
<b>W.N. Central</b>	—	1	3	21	17	—	0	3	2	7	7	119	320	492	2,172
Iowa	—	0	0	—	2	—	0	2	—	—	—	27	100	114	557
Kansas	—	0	1	3	3	—	0	1	—	2	—	16	32	56	185
Minnesota	—	0	3	8	2	—	0	1	—	2	—	46	207	101	1,154
Missouri	—	0	1	4	9	—	0	1	1	2	1	13	43	148	228
Nebraska	—	0	1	2	1	—	0	0	—	1	6	3	19	57	23
North Dakota	—	0	1	1	—	—	0	1	1	—	—	0	45	6	16
South Dakota	—	0	1	3	—	—	0	0	—	—	—	1	6	10	9
<b>S. Atlantic</b>	—	2	6	54	39	—	0	31	127	9	38	50	106	726	833
Delaware	—	0	1	1	1	—	0	0	—	—	—	1	4	10	13
District of Columbia	—	0	1	1	—	—	0	2	—	—	—	0	4	13	10
Florida	—	1	3	31	23	—	0	1	—	3	23	10	25	183	176
Georgia	—	0	2	4	7	—	0	1	—	—	—	6	19	99	94
Maryland	—	0	1	2	3	—	0	24	78	—	3	6	19	67	92
North Carolina	—	0	2	7	1	—	0	1	1	1	—	9	75	165	155
South Carolina	—	0	2	2	1	—	0	1	1	—	6	4	18	80	70
Virginia	—	0	2	4	—	—	0	12	47	4	6	10	39	105	184
West Virginia	—	0	1	2	3	—	0	1	—	1	—	1	7	4	39
<b>E.S. Central</b>	—	0	2	7	9	—	0	2	3	—	1	24	48	265	285
Alabama	—	0	1	2	3	—	0	1	1	—	1	4	12	60	63
Kentucky	—	0	1	1	1	—	0	1	—	—	—	12	35	97	121
Mississippi	—	0	1	2	1	—	0	0	—	—	—	1	4	22	37
Tennessee	—	0	1	2	4	—	0	1	2	—	—	5	15	86	64
<b>W.S. Central</b>	1	1	5	22	27	—	0	3	8	6	39	51	338	777	519
Arkansas	—	0	1	2	2	—	0	1	1	1	—	4	26	92	23
Louisiana	—	0	1	2	2	—	0	1	1	—	—	1	7	11	12
Oklahoma	—	0	2	4	5	—	0	3	—	—	1	0	34	16	18
Texas	1	0	4	14	18	—	0	2	6	5	38	44	286	658	466
<b>Mountain</b>	1	1	4	18	16	—	0	1	1	11	14	120	171	1,251	1,846
Arizona	—	0	3	9	1	—	0	0	—	3	—	17	36	289	488
Colorado	—	0	2	1	3	—	0	1	—	5	—	28	65	128	345
Idaho	1	0	1	3	1	—	0	0	—	—	2	4	14	70	42
Montana	—	0	1	—	5	—	0	0	—	1	9	11	48	280	201
Nevada	—	0	1	1	2	—	0	1	1	—	3	2	8	42	24
New Mexico	—	0	2	1	1	—	0	0	—	—	—	17	33	204	244
Utah	—	0	1	2	1	—	0	1	—	1	—	28	53	234	480
Wyoming	—	0	1	1	2	—	0	0	—	1	—	0	5	4	22
<b>Pacific</b>	1	2	16	70	78	—	1	3	13	17	28	78	310	785	2,271
Alaska	—	0	1	—	—	—	0	0	—	—	4	7	31	172	30
California	—	1	6	56	57	—	0	2	10	15	3	14	30	214	278
Hawaii	—	0	1	1	2	—	0	1	—	—	—	1	4	7	35
Oregon	—	0	2	5	15	—	0	1	2	1	1	8	47	130	360
Washington	1	0	12	8	4	—	0	1	1	1	20	36	266	262	1,568
<b>Territories</b>															
American Samoa	—	0	0	—	—	—	0	0	—	—	—	0	0	—	—
C.N.M.I.	—	—	—	—	—	—	—	—	—	—	—	—	—	—	—
Guam	—	—	—	—	—	—	—	—	—	—	—	—	—	—	—
Puerto Rico	—	0	0	—	—	—	0	0	—	3	—	0	0	—	—
U.S. Virgin Islands	—	0	0	—	—	—	0	0	—	—	—	0	0	—	—

C.N.M.I.: Commonwealth of Northern Mariana Islands.

U: Unavailable. —: No reported cases. N: Not reportable. NN: Not Nationally Notifiable. Cum: Cumulative year-to-date counts. Med: Median. Max: Maximum.

\* Case counts for reporting year 2012 and 2013 are provisional and subject to change. For further information on interpretation of these data, see <http://www.cdc.gov/nndss/document/ProvisionalNationalNotifiableDiseasesSurveillanceData20100927.pdf>. Data for TB are displayed in Table IV, which appears quarterly.

† Data for meningococcal disease, invasive caused by serogroups A, C, Y, and W-135; serogroup B; other serogroup; and unknown serogroup are available in Table I.

Morbidity and Mortality Weekly Report

TABLE II. (Continued) Provisional cases of selected notifiable diseases, United States, weeks ending May 18, 2013, and May 19, 2012 (20th week)\*

Reporting area	Rabies, animal					Salmonellosis					Shiga toxin-producing <i>E. coli</i> (STEC) <sup>†</sup>				
	Current week	Previous 52 weeks		Cum 2013	Cum 2012	Current week	Previous 52 weeks		Cum 2013	Cum 2012	Current week	Previous 52 weeks		Cum 2013	Cum 2012
		Med	Max				Med	Max				Med	Max		
<b>United States</b>	66	72	137	960	1,406	415	1,039	1,726	10,081	12,540	53	114	212	1,058	1,534
<b>New England</b>	5	6	16	109	154	10	38	73	532	563	1	5	9	59	46
Connecticut	—	3	8	43	72	—	7	19	92	132	—	1	5	16	12
Maine	—	1	4	21	46	1	3	11	37	37	—	0	4	8	1
Massachusetts	—	0	0	—	—	6	21	54	311	295	1	2	6	19	25
New Hampshire	2	1	3	13	7	1	3	9	40	37	—	0	4	9	3
Rhode Island	—	0	5	9	9	1	1	7	28	35	—	0	1	—	—
Vermont	3	1	7	23	20	1	1	7	24	27	—	0	3	7	5
<b>Mid. Atlantic</b>	10	12	32	110	251	53	88	188	1,124	1,437	14	12	26	128	177
New Jersey	—	0	0	—	—	—	15	48	174	331	—	2	7	16	50
New York (Upstate)	10	6	20	110	112	26	22	74	286	344	7	4	15	46	44
New York City	—	0	2	—	—	7	20	52	297	327	1	1	7	25	38
Pennsylvania	—	6	15	—	139	20	29	62	367	435	6	3	12	41	45
<b>E.N. Central</b>	3	1	7	11	19	23	89	238	1,113	1,557	5	16	77	148	261
Illinois	—	0	1	4	—	—	30	79	345	496	—	4	16	24	47
Indiana	—	0	2	—	—	—	10	40	126	197	—	2	23	18	56
Michigan	1	0	5	2	14	1	16	46	245	282	1	3	41	31	67
Ohio	2	0	7	5	5	22	24	50	325	335	4	4	20	61	38
Wisconsin	N	0	0	N	N	—	12	36	72	247	—	3	21	14	53
<b>W.N. Central</b>	3	3	48	49	75	27	46	150	607	892	8	17	42	138	230
Iowa	—	0	5	—	8	2	10	32	131	129	—	3	15	23	21
Kansas	1	1	5	28	26	—	9	18	108	145	—	2	7	19	22
Minnesota	—	0	0	—	—	—	11	44	—	226	—	3	16	—	38
Missouri	2	0	2	16	12	22	18	46	221	248	7	5	18	72	111
Nebraska	—	0	0	—	—	3	4	26	78	77	1	1	6	14	19
North Dakota	—	0	46	—	6	—	1	5	23	21	—	0	3	4	7
South Dakota	—	0	4	5	23	—	3	9	46	46	—	1	4	6	12
<b>S. Atlantic</b>	9	19	34	314	421	134	280	623	2,659	3,511	8	10	72	177	143
Delaware	—	0	0	—	—	—	2	10	15	36	—	0	3	2	3
District of Columbia	—	0	0	—	—	—	0	3	1	20	—	0	1	—	3
Florida	—	0	20	39	103	103	110	272	1,311	1,366	8	2	10	76	30
Georgia	—	0	0	—	—	14	43	110	357	588	—	3	6	39	43
Maryland	—	6	17	99	107	10	15	40	218	291	—	1	5	15	15
North Carolina	—	0	0	—	—	1	26	166	288	566	—	1	61	21	21
South Carolina	—	0	0	—	—	—	22	73	184	303	—	0	7	3	8
Virginia	8	11	23	157	178	6	22	46	257	287	—	1	6	15	18
West Virginia	1	1	6	19	33	—	3	15	28	54	—	0	2	6	2
<b>E.S. Central</b>	—	1	5	14	31	16	61	209	621	829	2	5	13	65	106
Alabama	—	0	5	9	26	4	17	59	167	244	—	1	5	18	22
Kentucky	—	0	3	4	4	3	9	50	129	136	—	1	9	13	20
Mississippi	—	0	1	1	1	—	14	65	138	206	—	0	3	6	7
Tennessee	—	0	0	—	—	9	18	63	187	243	2	2	11	28	57
<b>W.S. Central</b>	36	12	61	327	345	64	157	432	1,254	1,698	5	11	126	114	191
Arkansas	14	0	35	91	74	8	16	229	105	134	—	1	10	15	23
Louisiana	—	0	1	—	1	—	27	62	206	343	—	0	3	3	11
Oklahoma	—	0	23	22	25	5	15	34	174	163	5	1	11	18	25
Texas	22	11	40	214	245	51	89	329	769	1,058	—	7	105	78	132
<b>Mountain</b>	—	1	16	5	42	18	44	82	603	711	5	11	45	75	140
Arizona	N	0	0	N	N	4	15	31	223	225	—	2	8	12	40
Colorado	—	0	0	—	—	—	9	19	59	180	—	2	9	2	36
Idaho	—	0	15	—	—	3	2	7	35	47	2	1	30	16	19
Montana	N	0	0	N	N	7	2	7	26	24	3	1	5	13	8
Nevada	—	0	4	4	1	2	3	12	62	56	—	0	5	9	8
New Mexico	—	0	3	1	34	2	6	20	107	75	—	1	5	6	13
Utah	—	0	2	—	2	—	4	15	79	83	—	1	15	15	11
Wyoming	—	0	6	—	5	—	1	8	12	21	—	0	3	2	5
<b>Pacific</b>	—	4	14	21	68	70	96	181	1,568	1,342	5	13	44	154	240
Alaska	—	0	2	6	5	—	1	5	19	21	N	0	0	N	N
California	—	2	12	13	62	29	74	134	1,180	898	1	7	21	76	142
Hawaii	—	0	0	—	—	8	5	58	86	101	—	0	5	13	5
Oregon	—	0	2	2	1	5	8	15	104	117	2	3	11	31	52
Washington	—	0	9	—	—	28	13	70	179	205	2	3	24	34	41
<b>Territories</b>															
American Samoa	—	0	0	—	—	—	1	2	—	1	—	0	0	—	—
C.N.M.I.	—	—	—	—	—	—	—	—	—	—	—	—	—	—	—
Guam	—	—	—	—	—	—	—	—	—	—	—	—	—	—	—
Puerto Rico	—	0	0	—	27	—	0	4	—	22	—	0	2	—	—
U.S. Virgin Islands	—	0	0	—	—	—	0	0	—	—	—	0	0	—	—

C.N.M.I.: Commonwealth of Northern Mariana Islands.

U: Unavailable. —: No reported cases. N: Not reportable. NN: Not Nationally Notifiable. Cum: Cumulative year-to-date counts. Med: Median. Max: Maximum.

\* Case counts for reporting year 2012 and 2013 are provisional and subject to change. For further information on interpretation of these data, see <http://www.cdc.gov/nndss/document/ProvisionalNationalNotifiableDiseasesSurveillanceData20100927.pdf>. Data for TB are displayed in Table IV, which appears quarterly.

† Includes *E. coli* O157:H7; Shiga toxin-positive, serogroup non-O157; and Shiga toxin-positive, not serogrouped.

Morbidity and Mortality Weekly Report

TABLE II. (Continued) Provisional cases of selected notifiable diseases, United States, weeks ending May 18, 2013, and May 19, 2012 (20th week)\*

Reporting area	Spotted Fever Rickettsiosis (including RMSF) <sup>†</sup>														
	Shigellosis					Confirmed					Probable				
	Current week	Previous 52 weeks		Cum 2013	Cum 2012	Current week	Previous 52 weeks		Cum 2013	Cum 2012	Current week	Previous 52 weeks		Cum 2013	Cum 2012
	Med	Max				Med	Max				Med	Max			
<b>United States</b>	87	263	426	2,532	4,708	3	2	13	30	53	22	47	231	197	664
<b>New England</b>	1	4	13	64	47	—	0	1	—	—	—	0	3	1	4
Connecticut	—	1	3	16	11	—	0	0	—	—	—	0	0	—	—
Maine	—	0	2	1	2	—	0	0	—	—	—	0	1	—	2
Massachusetts	1	2	10	38	32	—	0	0	—	—	—	0	3	—	—
New Hampshire	—	0	1	3	1	—	0	0	—	—	—	0	1	1	—
Rhode Island	—	0	5	4	—	—	0	0	—	—	—	0	3	—	2
Vermont	—	0	1	2	1	—	0	1	—	—	—	0	0	—	—
<b>Mid. Atlantic</b>	4	34	74	240	1,052	—	0	1	1	3	—	2	12	8	64
New Jersey	—	6	30	26	543	—	0	0	—	—	—	0	10	—	41
New York (Upstate)	4	13	60	86	178	—	0	1	—	2	—	0	7	2	2
New York City	—	7	18	103	281	—	0	0	—	—	—	0	3	3	7
Pennsylvania	—	2	7	25	50	—	0	1	1	1	—	0	5	3	14
<b>E.N. Central</b>	12	39	114	606	455	1	0	2	2	3	1	2	18	13	57
Illinois	—	5	17	57	60	—	0	1	—	2	—	1	12	4	33
Indiana	—	1	17	18	26	1	0	1	2	1	—	1	6	5	12
Michigan	2	3	14	70	97	—	0	1	—	—	—	0	2	—	—
Ohio	10	28	103	447	248	—	0	0	—	—	1	0	3	3	7
Wisconsin	—	1	13	14	24	—	0	0	—	—	—	0	3	1	5
<b>W.N. Central</b>	2	14	46	78	218	1	0	2	2	—	1	2	27	16	78
Iowa	—	2	11	24	5	—	0	0	—	—	—	0	1	1	4
Kansas	—	1	4	11	66	—	0	0	—	—	—	0	0	—	—
Minnesota	—	6	20	—	103	—	0	0	—	—	—	0	2	—	4
Missouri	—	1	4	15	28	1	0	2	2	—	1	2	25	15	69
Nebraska	2	2	22	21	14	—	0	1	—	—	—	0	1	—	1
North Dakota	—	0	2	5	1	—	0	0	—	—	—	0	1	—	—
South Dakota	—	0	3	2	1	—	0	0	—	—	—	0	1	—	—
<b>S. Atlantic</b>	30	44	98	482	1,149	—	1	8	21	35	13	14	145	66	95
Delaware	—	0	4	2	1	—	0	0	—	—	—	0	2	3	9
District of Columbia	—	0	3	—	10	—	0	0	—	—	—	0	0	—	1
Florida	24	21	66	175	690	—	0	1	1	—	1	0	3	6	7
Georgia	4	11	20	187	264	—	1	8	19	30	—	0	0	—	—
Maryland	2	2	14	26	99	—	0	0	—	—	—	0	2	5	3
North Carolina	—	2	10	40	41	—	0	4	—	—	11	0	133	18	20
South Carolina	—	1	5	32	11	—	0	1	1	4	—	1	6	6	5
Virginia	—	1	6	19	28	—	0	1	—	1	1	4	35	28	50
West Virginia	—	0	1	1	5	—	0	0	—	—	—	0	1	—	—
<b>E.S. Central</b>	9	18	41	185	498	1	0	2	1	2	7	8	57	72	167
Alabama	7	4	20	70	132	—	0	1	—	1	—	2	13	14	26
Kentucky	1	4	21	21	183	—	0	1	—	1	—	1	7	6	8
Mississippi	—	4	13	52	108	—	0	2	—	—	—	0	3	—	5
Tennessee	1	3	9	42	75	1	0	1	1	—	7	6	50	52	128
<b>W.S. Central</b>	15	46	158	498	908	—	0	3	2	1	—	7	73	16	163
Arkansas	4	2	9	56	17	—	0	3	1	1	—	5	64	8	114
Louisiana	—	4	10	60	69	—	0	0	—	—	—	0	2	—	3
Oklahoma	4	6	60	66	181	—	0	1	—	—	—	0	26	—	20
Texas	7	29	95	316	641	—	0	1	1	—	—	1	8	8	26
<b>Mountain</b>	1	13	34	83	145	—	0	1	—	9	—	0	5	4	32
Arizona	—	7	21	42	106	—	0	1	—	9	—	0	2	4	24
Colorado	—	1	19	6	12	—	0	1	—	—	—	0	1	—	1
Idaho	—	0	2	2	2	—	0	0	—	—	—	0	1	—	2
Montana	1	0	2	1	3	—	0	0	—	—	—	0	1	—	—
Nevada	—	1	9	13	1	—	0	0	—	—	—	0	0	—	—
New Mexico	—	2	10	11	14	—	0	0	—	—	—	0	1	—	1
Utah	—	0	4	7	7	—	0	0	—	—	—	0	1	—	3
Wyoming	—	0	4	1	—	—	0	0	—	—	—	0	1	—	1
<b>Pacific</b>	13	18	42	296	236	—	0	2	1	—	—	0	2	1	4
Alaska	1	0	1	1	4	N	0	0	N	N	N	0	0	N	N
California	8	13	33	228	167	—	0	2	1	—	—	0	1	1	4
Hawaii	—	0	6	21	8	N	0	0	N	N	N	0	0	N	N
Oregon	2	1	10	19	24	—	0	0	—	—	—	0	1	—	—
Washington	2	1	19	27	33	—	0	1	—	—	—	0	0	—	—
<b>Territories</b>															
American Samoa	—	1	3	—	—	N	0	0	N	N	N	0	0	N	N
C.N.M.I.	—	—	—	—	—	—	—	—	—	—	—	—	—	—	—
Guam	—	—	—	—	—	N	—	—	N	N	N	—	—	N	N
Puerto Rico	—	0	0	—	—	N	0	0	N	N	N	0	0	N	N
U.S. Virgin Islands	—	0	0	—	—	N	0	0	N	N	N	0	0	N	N

C.N.M.I.: Commonwealth of Northern Mariana Islands.

U: Unavailable. —: No reported cases. N: Not reportable. NN: Not Nationally Notifiable. Cum: Cumulative year-to-date counts. Med: Median. Max: Maximum.

\* Case counts for reporting year 2012 and 2013 are provisional and subject to change. For further information on interpretation of these data, see <http://www.cdc.gov/nndss/document/ProvisionalNationalNotifiableDiseasesSurveillanceData20100927.pdf>. Data for TB are displayed in Table IV, which appears quarterly.

<sup>†</sup> Illnesses with similar clinical presentation that result from Spotted fever group rickettsia infections are reported as Spotted fever rickettsioses. Rocky Mountain spotted fever (RMSF) caused by *Rickettsia rickettsii*, is the most common and well-known spotted fever.

Morbidity and Mortality Weekly Report

TABLE II. (Continued) Provisional cases of selected notifiable diseases, United States, weeks ending May 18, 2013, and May 19, 2012 (20th week)\*

Reporting area	<i>Streptococcus pneumoniae</i> , <sup>†</sup> invasive disease										Syphilis, primary and secondary				
	All ages					Age <5									
	Current week	Previous 52 weeks		Cum 2013	Cum 2012	Current week	Previous 52 weeks		Cum 2013	Cum 2012	Current week	Previous 52 weeks		Cum 2013	Cum 2012
	Med	Max				Med	Max				Med	Max			
<b>United States</b>	177	276	948	7,385	7,267	11	22	55	470	553	76	297	372	5,110	5,386
<b>New England</b>	2	11	55	309	330	—	1	4	15	31	8	8	16	165	190
Connecticut	—	6	21	169	160	—	0	2	6	9	—	0	4	7	28
Maine	2	2	8	61	53	—	0	1	3	1	—	0	5	2	9
Massachusetts	—	0	4	8	21	—	0	3	5	16	7	6	16	132	114
New Hampshire	—	1	5	37	44	—	0	1	1	4	1	0	4	10	14
Rhode Island	—	0	29	1	25	—	0	0	—	1	—	0	4	12	22
Vermont	—	1	6	33	27	—	0	0	—	—	—	0	2	2	3
<b>Mid. Atlantic</b>	23	39	196	802	1,072	—	2	13	36	47	12	38	59	708	677
New Jersey	—	5	27	8	296	—	0	3	—	15	—	4	10	49	78
New York (Upstate)	18	17	145	420	432	—	1	9	22	22	5	5	32	103	67
New York City	5	14	36	374	344	—	0	3	14	10	1	20	32	378	347
Pennsylvania	N	—	—	N	N	N	0	0	N	N	6	9	19	178	185
<b>E.N. Central</b>	42	57	132	1,550	1,516	3	4	9	77	113	1	31	61	468	678
Illinois	N	0	0	N	N	—	1	3	18	22	—	12	25	142	317
Indiana	—	13	50	287	333	—	0	3	12	14	1	4	10	77	78
Michigan	2	13	30	351	318	1	0	3	19	22	—	5	14	102	111
Ohio	33	21	63	676	619	1	1	6	19	39	—	8	15	126	146
Wisconsin	7	9	26	236	246	1	0	2	9	16	—	2	5	21	26
<b>W.N. Central</b>	3	12	35	305	324	1	1	5	46	42	—	8	18	154	126
Iowa	N	0	0	N	N	N	0	0	N	N	—	1	5	19	18
Kansas	N	0	0	N	N	N	0	0	N	N	—	0	2	9	7
Minnesota	—	8	24	181	202	—	1	3	14	11	—	3	5	41	37
Missouri	N	0	0	N	N	—	1	3	17	18	—	3	9	74	57
Nebraska	3	1	7	70	75	1	0	1	7	5	—	0	2	7	2
North Dakota	—	0	1	2	1	—	0	1	2	—	—	0	1	1	1
South Dakota	—	2	6	52	46	—	0	1	6	8	—	0	2	3	4
<b>S. Atlantic</b>	39	61	143	1,818	1,567	4	5	14	130	116	30	70	184	1,163	1,372
Delaware	—	0	3	17	21	—	0	1	—	—	—	0	5	7	19
District of Columbia	—	1	7	28	31	—	0	1	—	1	2	3	8	77	79
Florida	12	20	59	594	489	1	1	6	42	37	1	25	39	439	540
Georgia	10	18	56	551	420	—	2	6	39	28	11	13	110	209	278
Maryland	8	7	26	246	246	1	0	4	18	16	—	8	14	128	155
North Carolina	N	0	0	N	N	N	0	0	N	N	8	4	34	70	132
South Carolina	8	7	21	246	195	2	0	3	10	14	—	5	10	108	82
Virginia	N	0	0	N	N	—	0	4	15	15	8	5	40	118	84
West Virginia	1	5	23	136	165	—	0	2	6	5	—	0	2	7	3
<b>E.S. Central</b>	25	23	60	764	643	—	2	5	45	43	3	12	25	181	296
Alabama	4	2	10	94	57	—	0	3	11	4	—	3	10	45	82
Kentucky	1	4	12	137	105	—	0	1	4	4	3	2	10	47	44
Mississippi	3	4	12	118	87	—	0	2	10	11	—	1	11	33	69
Tennessee	17	13	41	415	394	—	0	3	20	24	—	4	9	56	101
<b>W.S. Central</b>	24	30	368	942	834	—	3	24	66	82	4	35	58	729	560
Arkansas	—	3	24	97	84	—	0	1	2	10	4	2	13	63	85
Louisiana	—	5	14	128	102	—	0	4	8	8	—	6	20	86	109
Oklahoma	N	0	0	N	N	—	0	2	10	15	—	2	5	33	25
Texas	24	22	340	717	648	—	2	23	46	49	—	23	39	547	341
<b>Mountain</b>	16	29	73	823	907	1	2	7	44	71	1	14	26	229	212
Arizona	9	12	42	475	374	—	1	4	23	26	—	4	8	72	74
Colorado	—	5	22	79	213	—	0	3	4	12	—	4	12	58	57
Idaho	N	0	0	N	N	—	0	1	3	1	—	0	4	2	11
Montana	3	0	2	17	20	1	0	1	3	1	—	0	1	3	—
Nevada	—	2	7	66	55	—	0	1	2	7	1	2	8	52	35
New Mexico	3	5	17	157	148	—	0	2	7	13	—	2	6	26	28
Utah	—	2	11	17	86	—	0	3	2	10	—	1	3	15	7
Wyoming	1	0	3	12	11	—	0	1	—	1	—	0	1	1	—
<b>Pacific</b>	3	4	10	72	74	2	0	2	11	8	17	71	103	1,313	1,275
Alaska	2	3	7	45	50	1	0	1	9	8	1	0	2	7	3
California	N	0	0	N	N	N	0	0	N	N	10	60	85	1,128	1,063
Hawaii	1	1	6	27	24	1	0	2	2	—	—	0	3	7	6
Oregon	N	0	0	N	N	N	0	0	N	N	2	4	15	97	78
Washington	N	0	0	N	N	N	0	0	N	N	4	5	13	74	125
<b>Territories</b>															
American Samoa	N	0	0	N	N	—	0	0	—	—	—	0	0	—	—
C.N.M.I.	—	—	—	—	—	—	—	—	—	—	—	—	—	—	—
Guam	—	—	—	—	—	—	—	—	—	—	—	—	—	—	—
Puerto Rico	—	0	0	—	—	—	0	0	—	—	16	7	17	150	96
U.S. Virgin Islands	—	0	0	—	—	—	0	0	—	—	—	0	0	—	—

C.N.M.I.: Commonwealth of Northern Mariana Islands.

U: Unavailable. —: No reported cases. N: Not reportable. NN: Not Nationally Notifiable. Cum: Cumulative year-to-date counts. Med: Median. Max: Maximum.

\* Case counts for reporting year 2012 and 2013 are provisional and subject to change. For further information on interpretation of these data, see <http://www.cdc.gov/nndss/document/ProvisionalNationalNotifiableDiseasesSurveillanceData20100927.pdf>. Data for TB are displayed in Table IV, which appears quarterly.

<sup>†</sup> Includes drug resistant and susceptible cases of invasive *Streptococcus pneumoniae* disease among children <5 years and among all ages. Case definition: Isolation of *S. pneumoniae* from a normally sterile body site (e.g., blood or cerebrospinal fluid).

Morbidity and Mortality Weekly Report

TABLE II. (Continued) Provisional cases of selected notifiable diseases, United States, weeks ending May 18, 2013, and May 19, 2012 (20th week)\*

Reporting area	Varicella (chickenpox)					West Nile virus disease <sup>†</sup>									
	Current week	Previous 52 weeks		Cum 2013	Cum 2012	Neuroinvasive					Nonneuroinvasive <sup>§</sup>				
		Med	Max			Current week	Previous 52 weeks	Cum 2013	Cum 2012	Current week	Previous 52 weeks	Cum 2013	Cum 2012		
<b>United States</b>	126	185	371	3,485	6,477	—	4	323	—	3	—	4	342	1	4
<b>New England</b>	7	19	54	307	666	—	0	8	—	—	—	0	5	—	—
Connecticut	1	5	11	78	100	—	0	2	—	—	—	0	3	—	—
Maine	2	3	10	58	137	—	0	1	—	—	—	0	0	—	—
Massachusetts	3	7	21	128	264	—	0	7	—	—	—	0	3	—	—
New Hampshire	—	1	8	9	63	—	0	1	—	—	—	0	0	—	—
Rhode Island	—	0	10	6	32	—	0	1	—	—	—	0	1	—	—
Vermont	1	1	13	28	70	—	0	1	—	—	—	0	1	—	—
<b>Mid. Atlantic</b>	14	18	44	325	660	—	0	19	—	—	—	0	18	—	—
New Jersey	—	4	19	40	256	—	0	5	—	—	—	0	5	—	—
New York (Upstate)	N	0	0	N	N	—	0	6	—	—	—	0	8	—	—
New York City	—	0	0	—	—	—	0	5	—	—	—	0	2	—	—
Pennsylvania	14	14	34	285	404	—	0	5	—	—	—	0	4	—	—
<b>E.N. Central</b>	30	56	144	1,087	1,710	—	0	91	—	—	—	0	39	—	1
Illinois	—	15	32	294	443	—	0	31	—	—	—	0	18	—	1
Indiana	5	6	26	117	172	—	0	8	—	—	—	0	6	—	—
Michigan	3	15	61	234	441	—	0	33	—	—	—	0	12	—	—
Ohio	15	14	33	311	406	—	0	19	—	—	—	0	12	—	—
Wisconsin	7	6	24	131	248	—	0	11	—	—	—	0	3	—	—
<b>W.N. Central</b>	—	7	46	114	333	—	0	36	—	1	—	0	60	—	1
Iowa	N	0	0	N	N	—	0	3	—	—	—	0	5	—	—
Kansas	—	0	0	—	85	—	0	3	—	1	—	0	6	—	—
Minnesota	—	0	0	—	—	—	0	6	—	—	—	0	7	—	—
Missouri	—	5	42	88	196	—	0	4	—	—	—	0	1	—	—
Nebraska	—	0	3	—	22	—	0	8	—	—	—	0	22	—	—
North Dakota	—	0	5	12	15	—	0	8	—	—	—	0	11	—	—
South Dakota	—	0	4	14	15	—	0	17	—	—	—	0	28	—	1
<b>S. Atlantic</b>	23	25	43	529	852	—	0	21	—	—	—	0	21	—	—
Delaware	—	0	2	3	2	—	0	1	—	—	—	0	2	—	—
District of Columbia	—	0	2	—	9	—	0	3	—	—	—	0	1	—	—
Florida	20	12	24	302	477	—	0	5	—	—	—	0	5	—	—
Georgia	—	1	6	29	20	—	0	6	—	—	—	0	10	—	—
Maryland	N	0	0	N	N	—	0	5	—	—	—	0	4	—	—
North Carolina	N	0	0	N	N	—	0	3	—	—	—	0	0	—	—
South Carolina	3	0	13	68	1	—	0	5	—	—	—	0	2	—	—
Virginia	—	8	21	92	212	—	0	4	—	—	—	0	3	—	—
West Virginia	—	2	12	35	131	—	0	1	—	—	—	0	3	—	—
<b>E.S. Central</b>	1	2	9	69	103	—	0	20	—	1	—	0	22	1	1
Alabama	1	2	9	68	98	—	0	7	—	—	—	0	4	—	1
Kentucky	N	0	0	N	N	—	0	4	—	1	—	0	2	—	—
Mississippi	—	0	1	1	5	—	0	12	—	—	—	0	17	1	—
Tennessee	N	0	0	N	N	—	0	4	—	—	—	0	2	—	—
<b>W.S. Central</b>	48	40	212	746	1,257	—	2	144	—	—	—	1	166	—	1
Arkansas	2	3	19	71	93	—	0	9	—	—	—	0	3	—	—
Louisiana	—	1	6	18	31	—	0	18	—	—	—	0	26	—	—
Oklahoma	N	0	0	N	N	—	0	24	—	—	—	0	22	—	—
Texas	46	34	209	657	1,133	—	2	104	—	—	—	1	131	—	1
<b>Mountain</b>	3	19	44	277	842	—	0	37	—	1	—	0	22	—	—
Arizona	—	3	21	13	298	—	0	10	—	1	—	0	7	—	—
Colorado	—	7	15	85	249	—	0	17	—	—	—	0	13	—	—
Idaho	N	0	0	N	N	—	0	1	—	—	—	0	3	—	—
Montana	3	2	8	40	53	—	0	1	—	—	—	0	2	—	—
Nevada	N	0	0	N	N	—	0	1	—	—	—	0	2	—	—
New Mexico	—	1	5	25	58	—	0	9	—	—	—	0	5	—	—
Utah	—	5	13	110	175	—	0	1	—	—	—	0	1	—	—
Wyoming	—	0	3	4	9	—	0	1	—	—	—	0	2	—	—
<b>Pacific</b>	—	2	8	31	54	—	0	33	—	—	—	0	26	—	—
Alaska	—	1	4	15	30	—	0	0	—	—	—	0	0	—	—
California	—	0	4	6	9	—	0	33	—	—	—	0	25	—	—
Hawaii	—	1	4	10	15	—	0	0	—	—	—	0	0	—	—
Oregon	N	0	0	N	N	—	0	0	—	—	—	0	2	—	—
Washington	N	0	0	N	N	—	0	4	—	—	—	0	0	—	—
<b>Territories</b>															
American Samoa	N	0	0	N	N	—	0	0	—	—	—	0	0	—	—
C.N.M.I.	—	—	—	—	—	—	—	—	—	—	—	—	—	—	—
Guam	—	—	—	—	—	—	—	—	—	—	—	—	—	—	—
Puerto Rico	—	0	4	—	60	—	0	1	—	—	—	0	0	—	—
U.S. Virgin Islands	—	0	0	—	—	—	0	0	—	—	—	0	0	—	—

C.N.M.I.: Commonwealth of Northern Mariana Islands.

U: Unavailable. —: No reported cases. N: Not reportable. NN: Not Nationally Notifiable. Cum: Cumulative year-to-date counts. Med: Median. Max: Maximum.

\* Case counts for reporting year 2012 and 2013 are provisional and subject to change. For further information on interpretation of these data, see <http://www.cdc.gov/nndss/document/ProvisionalNationalNotifiableDiseasesSurveillanceData20100927.pdf>. Data for TB are displayed in Table IV, which appears quarterly.

† Updated weekly from reports to the Division of Vector-Borne Infectious Diseases, National Center for Zoonotic, Vector-Borne, and Enteric Diseases (ArboNET Surveillance). Data for California serogroup, eastern equine, Powassan, St. Louis, and western equine diseases are available in Table I.

§ Not reportable in all states. Data from states where the condition is not reportable are excluded from this table, except starting in 2007 for the domestic arboviral diseases and influenza-associated pediatric mortality, and in 2003 for SARS-CoV. Reporting exceptions are available at [http://www.cdc.gov/nndss/document/SRCA\\_FINAL\\_REPORT\\_2006-2012\\_final.xlsx](http://www.cdc.gov/nndss/document/SRCA_FINAL_REPORT_2006-2012_final.xlsx).

Morbidity and Mortality Weekly Report

TABLE III. Deaths in 122 U.S. cities,\* week ending May 18, 2013 (20th week)

Reporting area	All causes, by age (years)						P&I†	Total	Reporting area (Continued)	All causes, by age (years)						P&I†	Total
	All Ages	≥65	45-64	25-44	1-24	<1				All Ages	≥65	45-64	25-44	1-24	<1		
<b>New England</b>	539	369	117	27	16	7	51	<b>S. Atlantic</b>	930	589	238	52	22	29	50		
Boston, MA	125	78	30	6	9	2	14	Atlanta, GA	149	100	35	10	—	4	8		
Bridgeport, CT	36	26	6	2	2	—	2	Baltimore, MD	128	69	41	7	5	6	15		
Cambridge, MA	16	13	3	—	—	—	1	Charlotte, NC	123	74	30	14	3	2	4		
Fall River, MA	32	22	4	3	—	—	5	Jacksonville, FL	129	88	30	4	3	4	7		
Hartford, CT	56	29	19	4	1	3	3	Miami, FL	60	41	12	6	1	—	1		
Lowell, MA	28	22	6	—	—	—	2	Norfolk, VA	39	22	9	—	5	3	2		
Lynn, MA	6	5	1	—	—	—	—	Richmond, VA	62	38	17	3	—	4	2		
New Bedford, MA	18	13	5	—	—	—	2	Savannah, GA	79	50	21	4	2	2	7		
New Haven, CT	36	23	9	4	—	—	5	St. Petersburg, FL	49	35	14	—	—	—	1		
Providence, RI	67	48	13	1	3	2	3	Tampa, FL	5	4	1	—	—	—	—		
Somerville, MA	3	2	1	—	—	—	—	Washington, D.C.	101	64	26	4	3	4	3		
Springfield, MA	31	23	6	2	—	—	4	Wilmington, DE	6	4	2	—	—	—	—		
Waterbury, CT	31	23	6	2	—	—	2	<b>E.S. Central</b>	923	620	219	49	14	21	73		
Worcester, MA	54	42	8	3	1	—	8	Birmingham, AL	217	155	41	11	2	8	22		
<b>Mid. Atlantic</b>	1,676	1,180	371	82	28	15	83	Chattanooga, TN	93	64	24	4	1	—	4		
Albany, NY	43	35	5	2	1	—	2	Knoxville, TN	120	84	27	6	3	—	6		
Allentown, PA	31	23	5	2	—	1	2	Lexington, KY	26	18	7	1	—	—	1		
Buffalo, NY	80	57	17	3	—	3	5	Memphis, TN	196	125	51	11	3	6	18		
Camden, NJ	31	18	9	3	1	—	1	Mobile, AL	89	57	21	5	1	5	6		
Elizabeth, NJ	14	10	3	—	1	—	—	Montgomery, AL	37	22	7	6	1	1	4		
Erie, PA	57	42	12	2	—	1	6	Nashville, TN	145	95	41	5	3	1	12		
Jersey City, NJ	19	11	6	2	—	—	1	<b>W.S. Central</b>	1,484	955	356	106	33	34	75		
New York City, NY	971	687	221	42	16	5	46	Austin, TX	79	43	11	20	3	2	7		
Newark, NJ	40	18	14	6	1	1	1	Baton Rouge, LA	103	70	23	8	1	1	1		
Paterson, NJ	19	6	7	3	2	1	—	Corpus Christi, TX	54	40	11	2	—	1	3		
Philadelphia, PA	U	U	U	U	U	U	U	Dallas, TX	212	133	55	17	3	4	12		
Pittsburgh, PA <sup>§</sup>	58	45	10	2	1	—	2	El Paso, TX	92	66	16	5	4	1	1		
Reading, PA	25	20	5	—	—	—	2	Fort Worth, TX	U	U	U	U	U	U	U		
Rochester, NY	80	57	14	5	2	2	7	Houston, TX	398	258	99	20	7	14	18		
Schenectady, NY	20	14	6	—	—	—	2	Little Rock, AR	99	54	30	5	4	6	7		
Scranton, PA	35	30	5	—	—	—	1	New Orleans, LA	58	27	12	17	2	—	2		
Syracuse, NY	95	70	19	5	1	—	3	San Antonio, TX	250	173	60	9	5	3	17		
Trenton, NJ	26	14	7	2	2	1	—	Shreveport, LA	73	42	25	1	3	2	5		
Utica, NY	23	16	5	2	—	—	1	Tulsa, OK	66	49	14	2	1	—	2		
Yonkers, NY	9	7	1	1	—	—	1	<b>Mountain</b>	1,100	717	278	67	16	19	77		
<b>E.N. Central</b>	1,943	1,268	483	107	48	37	134	Albuquerque, NM	127	91	28	8	—	—	12		
Akron, OH	49	27	18	1	1	2	4	Boise, ID	71	53	13	2	2	1	4		
Canton, OH	40	34	5	1	—	—	3	Colorado Springs, CO	15	12	2	1	—	—	5		
Chicago, IL	237	159	58	13	7	—	9	Denver, CO	99	59	28	6	2	4	3		
Cincinnati, OH	90	52	22	6	5	5	5	Las Vegas, NV	272	180	76	13	2	1	31		
Cleveland, OH	236	159	58	10	8	1	16	Ogden, UT	27	16	6	2	1	2	—		
Columbus, OH	180	121	41	11	3	4	8	Phoenix, AZ	158	89	48	13	1	5	4		
Dayton, OH	109	72	22	10	3	2	9	Pueblo, CO	22	16	5	1	—	—	3		
Detroit, MI	155	79	53	11	9	3	9	Salt Lake City, UT	130	79	33	8	6	4	9		
Evansville, IN	42	33	7	1	—	1	2	Tucson, AZ	179	122	39	13	2	2	6		
Fort Wayne, IN	81	57	21	2	1	—	8	<b>Pacific</b>	1,659	1,160	351	84	38	25	154		
Gary, IN	14	8	4	1	—	1	2	Berkeley, CA	18	13	3	1	—	1	—		
Grand Rapids, MI	56	39	15	2	—	—	6	Fresno, CA	117	81	24	8	2	2	16		
Indianapolis, IN	176	104	46	11	3	12	21	Glendale, CA	29	20	7	—	2	—	7		
Lansing, MI	47	33	12	2	—	—	1	Honolulu, HI	71	59	8	2	1	1	7		
Milwaukee, WI	74	47	20	5	2	—	9	Long Beach, CA	59	39	13	3	3	1	9		
Peoria, IL	65	44	13	6	—	2	8	Los Angeles, CA	224	150	52	14	7	1	32		
Rockford, IL	52	37	9	4	2	—	4	Pasadena, CA	17	12	2	3	—	—	1		
South Bend, IN	59	39	14	2	2	2	6	Portland, OR	146	106	28	8	2	2	—		
Toledo, OH	113	74	31	5	2	1	1	Sacramento, CA	190	134	42	6	4	4	17		
Youngstown, OH	68	50	14	3	—	1	3	San Diego, CA	171	100	42	11	8	9	10		
<b>W.N. Central</b>	720	447	192	41	14	25	40	San Francisco, CA	113	72	33	6	2	—	14		
Des Moines, IA	94	69	17	5	2	1	5	San Jose, CA	186	143	30	8	2	3	10		
Duluth, MN	23	17	6	—	—	—	1	Santa Cruz, CA	32	25	7	—	—	—	3		
Kansas City, KS	15	7	6	1	—	1	1	Seattle, WA	102	76	22	3	1	—	11		
Kansas City, MO	89	53	29	5	1	1	8	Spokane, WA	56	40	13	3	—	—	5		
Lincoln, NE	63	47	15	1	—	—	2	Tacoma, WA	128	90	25	8	4	1	12		
Minneapolis, MN	65	34	19	5	2	5	6	<b>Total¶</b>	<b>10,974</b>	<b>7,305</b>	<b>2,605</b>	<b>615</b>	<b>229</b>	<b>212</b>	<b>737</b>		
Omaha, NE	101	74	21	2	1	3	6										
St. Louis, MO	142	65	49	16	4	7	5										
St. Paul, MN	64	40	14	2	1	7	5										
Wichita, KS	64	41	16	4	3	—	1										

U: Unavailable. —: No reported cases.

\* Mortality data in this table are voluntarily reported from 122 cities in the United States, most of which have populations of >100,000. A death is reported by the place of its occurrence and by the week that the death certificate was filed. Fetal deaths are not included.

† Pneumonia and influenza.

§ Because of changes in reporting methods in this Pennsylvania city, these numbers are partial counts for the current week. Complete counts will be available in 4 to 6 weeks.

¶ Total includes unknown ages.