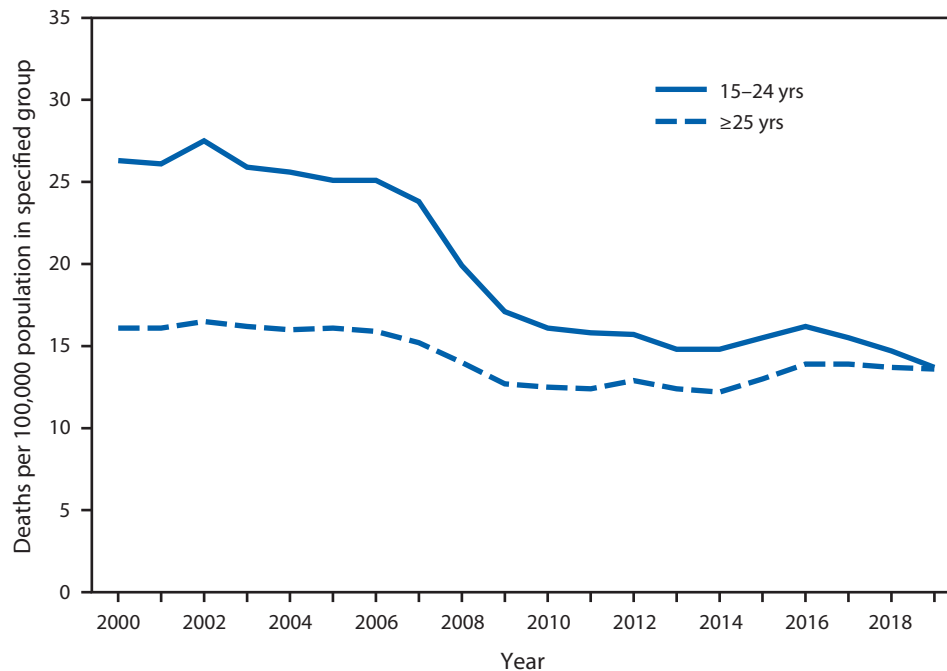


QuickStats

FROM THE NATIONAL CENTER FOR HEALTH STATISTICS

Motor-Vehicle–Traffic Death* Rates Among Persons Aged 15–24 Years and ≥25 Years — United States, 2000–2019



* Deaths from motor-vehicle–traffic injuries are identified with *International Classification of Diseases, Tenth Revision* codes V02–V04[.1,.9], V09.2, V12–V14[.3–.9], V19[.4–.6], V20–V28[.3–.9], V29–V79[.4–.9], V80[.3–.5], V81.1, V82.1, V83–V86[.0–.3], V87[.0–.8], and V89.2.

From 2000 to 2006, rates of death caused by motor-vehicle–traffic injuries among persons aged 15–24 years and ≥25 years did not change significantly. From 2006 to 2010, motor-vehicle–traffic death rates per 100,000 population declined among those aged 15–24 years, from 25.1 (2006) to 16.1 (2010), and among those aged ≥25 years, from 15.9 (2006) to 12.5 (2010). Throughout most of the period, motor-vehicle–traffic death rates were higher among persons aged 15–24 years; however, motor-vehicle–traffic death rates began to converge in more recent years, and by 2019, the difference in the rate among those aged 15–24 years (13.7) and those aged ≥25 years (13.6) was not statistically significant.

Source: National Center for Health Statistics, National Vital Statistics System, Mortality Data, 2000–2019. <http://www.cdc.gov/nchs/nvss/deaths.htm>

Reported by: Sally C. Curtin, MA, sac2@cdc.gov, 301-458-4142; Betzaida Tejada-Vera, MS.

For more information on this topic, CDC recommends the following link: <https://www.cdc.gov/transportationsafety>