

## Advance Report of Final Marriage Statistics, 1985

Marriages dropped substantially in 1985 in every region, almost every month, most States, and for every marital-status group.

The number of marriages was 2,412,625 in 1985, down 3 percent from the historic high level reached in 1984 (table 1). The 1985 marriage rate per 1,000 total population was 10.1, down 4 percent from 1984 (10.5). Although the rate per 1,000 total population was not an unusually low rate, the rates based on eligible unmarried female population dipped to record low levels (figure 1 and table 1). The rate per 1,000 unmarried women aged 15 years and over was 57.0, down 4 percent from 1984, and the rate per 1,000 unmarried women aged 15-44 years was 94.9, also 4 percent below the rate for 1984.

Tables 1-3 show the numbers of marriages that are obtained annually from all States and the District of Columbia. Tables 4-11 show detailed information about characteristics of brides and grooms that is reported by some or all of the 42 States and the District of Columbia that constitute the marriage-registration area (MRA). Eighty percent of all marriages took place in the MRA in 1985.

### Seasonal variation

Marriages followed a typical seasonal pattern in 1985 as in previous years (table 2). The marriage rate was more than twice as high in June as in January or February. Because marriages declined in 1985, however, rates for each month were lower than the comparable 1984 rates except for November, which was unchanged, and August, which was higher in 1985. Each month had five Saturdays in 1985 and only four Saturdays in 1984. The number of Saturdays in a month is important because it is the most popular day for weddings. More than half of the 1985 marriages were performed on Saturdays.

### Geographic variation

The decline in marriage during 1985 was widespread geographically. Every region, every geographic division except

one, and four of every five States reported a lower number of marriages in 1985 than in 1984 (table 3). Both the number of marriages and the rate declined for all four regions, but the relative decline was smaller in the Northeast than in the other three regions. Typically the marriage rate for the Northeast is the lowest of the four regions, and this continued to be true in 1985 when the rate was 8.6 per 1,000 population, 2 percent below the 1984 rate. In the other three regions, marriage rates declined 4 percent. The rate for the Midwest fell from 9.2 per 1,000 population to 8.8; for the South, from 11.7 to 11.2; and for the West, from 11.9 to 11.4. Thus the differences among the regions were still substantial but converged slightly from 1984 to 1985.

### Total marriage rate

The total marriage rate shows what would happen if the age-specific rates for a particular year were to continue throughout the lives of a hypothetical group of 1,000 men or women. The total marriage rate can be calculated separately for first marriages and remarriages. The rates for 1985 show that for every 1,000 women there would be 699.3 first marriages and 413.7 remarriages (table 4). If these age-specific rates do not change, then only 70 percent of American women would ever marry. The total first-marriage rate for men in 1985 was 688.9. These total first-marriage rates represent a sizable drop from 1972 when the rates showed that 87 percent of women and 96 percent of men would ever marry.

In historical terms, it would be very unusual for so many American men and women to remain single. A study of marital histories of Americans born between 1900 and 1950 has shown that of those who lived to be at least 15 years of age, the proportion that ultimately married has never been below 89 percent.<sup>1</sup> Therefore, if the currently low level of age-specific mar-

<sup>1</sup>Schoen, R., W. Urton, K. Woodrow, and J. Baj. 1985. Marriage and divorce in twentieth century American cohorts. *Demography* 22(1):101-14.

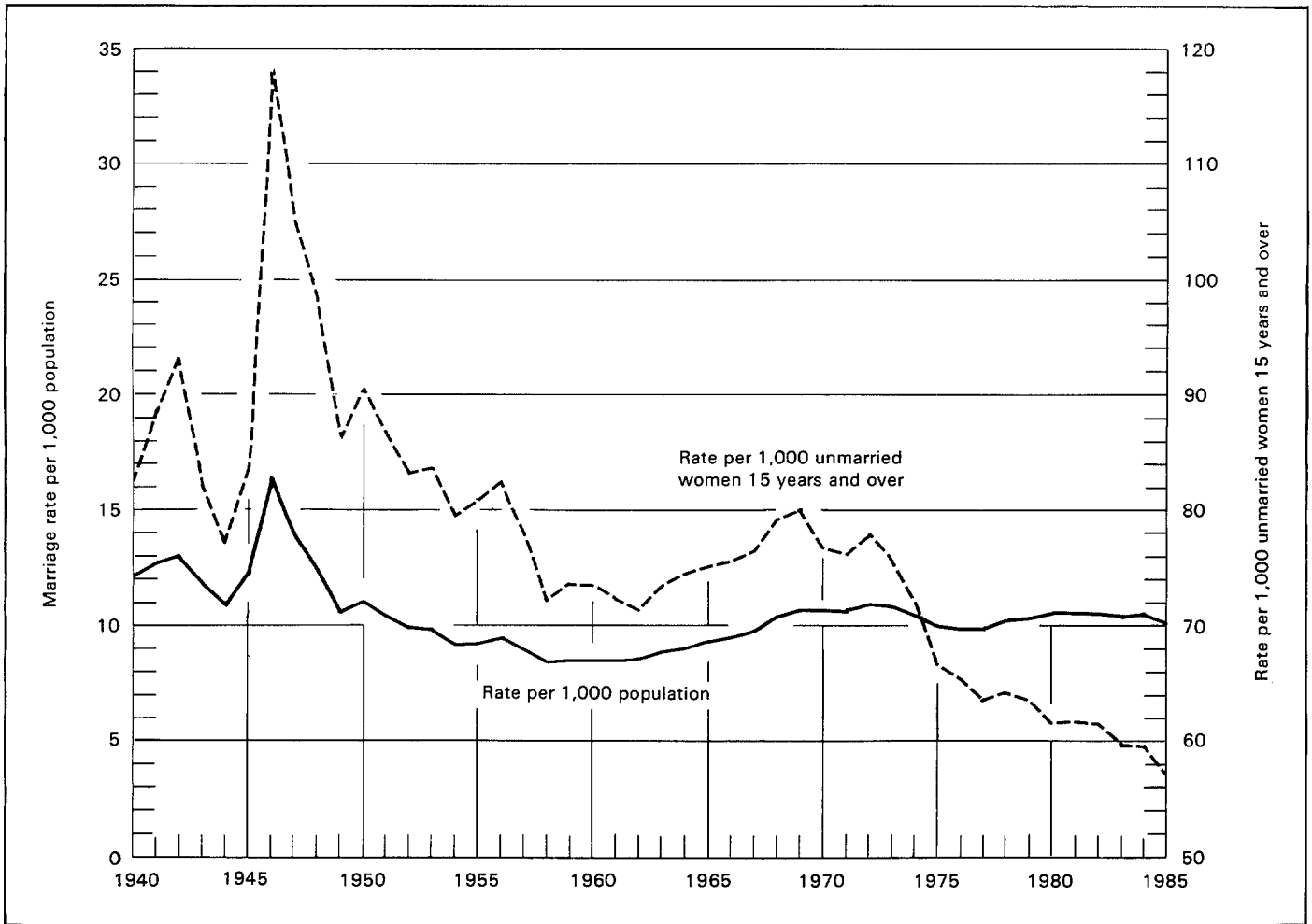


Figure 1. Marriage rates: United States, 1940-85

riage rates were to continue indefinitely, it would constitute a significant change in marriage patterns.

### Previous marital status

In 1985 41 States and the District of Columbia reported whether marriages were first marriages or remarriages of the bride and groom; 38 of these States and the District of Columbia also reported whether the remarriage followed divorce or widowhood. In these areas, 66 percent of brides were previously single, 31 percent were previously divorced, and 3 percent were previously widowed. The proportions for grooms were virtually the same. Although the overall proportions are the same, a specific bride and groom may have a different previous marital status. In 75 percent of the marriages the previous marital status of both bride and groom was the same (55 percent single, 19 percent divorced, and 1 percent widowed); in 25 percent the status was different (11 percent with single bride and divorced groom, 10 percent with single groom and divorced bride, and 4 percent with either bride or groom widowed). (Data not shown in report.)

Marriage rates calculated for different marital-status groups show that divorced persons marry at far higher rates than do single persons, and both divorced and single people marry at higher rates than do widowed persons. Remarriage rates are higher for men than women, and first-marriage rates are higher for women than men.

Since the early 1970's the predominant trend in specific marital-status rates has been downward (table 5 and figure 2). With only a few exceptions, the marriage rates for single, widowed, and divorced men and women declined each year between 1970 and 1985. During this period the rates fell by about one-third to nearly one-half.

As mentioned before, divorced persons are more likely to marry than single persons, and this is true regardless of age. For some age groups, the rates for divorced women are two to four times the rates for single women (table 6). For example, for women 20-24 years of age, the marriage rate for divorced women was 263.6 per 1,000, compared with 102.1 for single women. For women aged 30-34 years, the marriage rate for divorced women was 127.8 compared with 66.3 for single women. For women aged 40-44 years, the marriage rate was

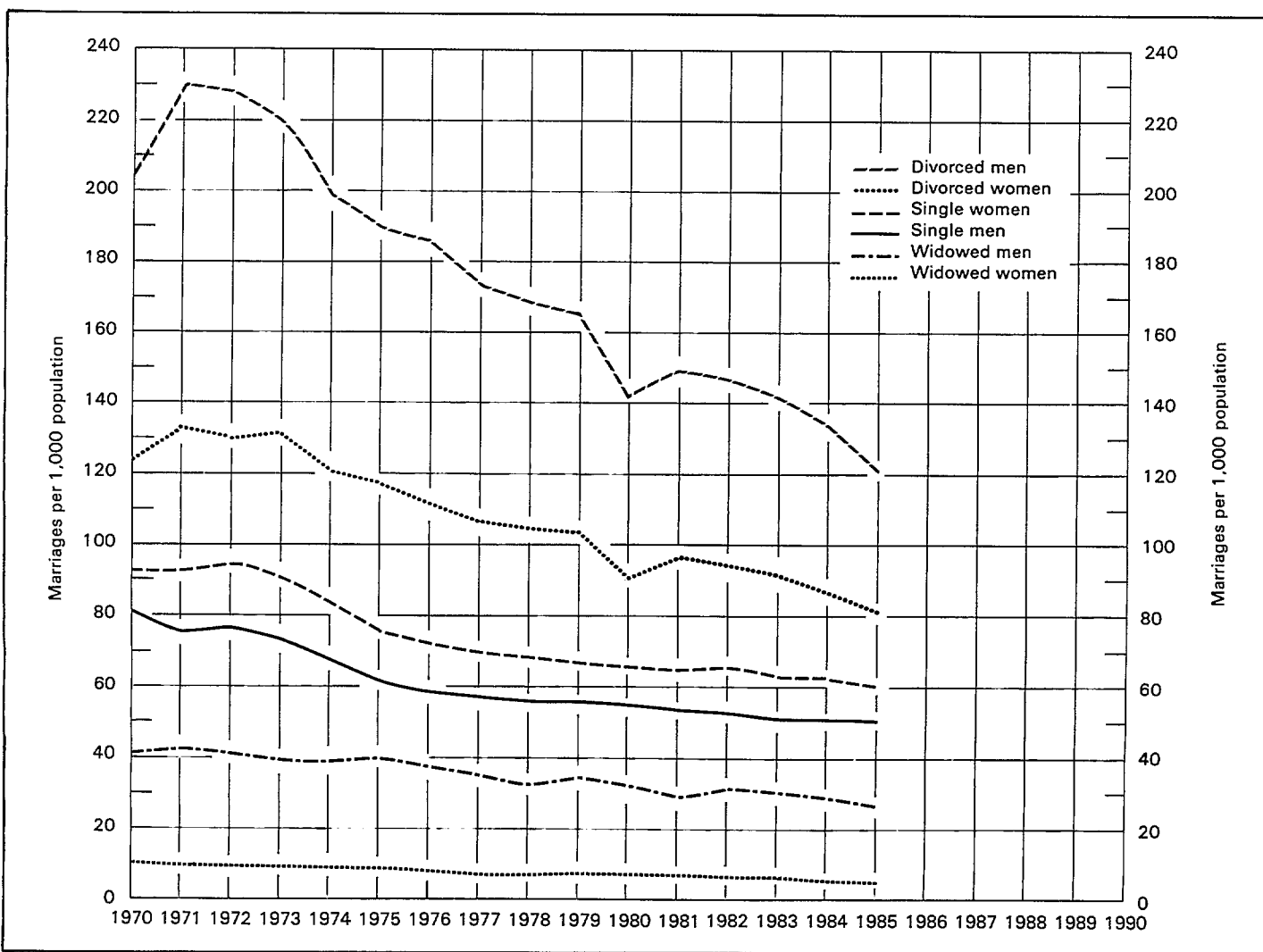


Figure 2. Marriage rates of single, divorced, and widowed men and women: Marriage-registration area, 1970-85

62.9 for divorced women compared with 24.1 for single women. The relative difference between rates of marriage for divorced and single men was even greater than the differences for women, especially for the older ages.

**Age at marriage**

The percent distribution of marriages according to age shows that first marriages are concentrated at 20-24 years of age; remarriages after divorce, between 25 and 40 years of age; and remarriages after widowhood, over 45 years of age. These distributions can also be represented by such summary measures as the mean and median ages (table 7). In general, previously divorced brides were 10 years older, and previously widowed brides were almost 30 years older, than previously single brides. For men the differences were even greater. The mean or average age at marriage in 1985 for single brides was 24.0 and for single grooms, 25.9 years. The average age for previously divorced brides was 34.2 and for grooms, 37.8

years. The average age for previously widowed brides was 53.0 and for grooms, 60.8 years.

After being relatively stable or showing slight declines from 1963 through 1972, the mean age at first marriage started upward, reaching 24.0 years for brides and 25.9 years for grooms in 1985. For previously divorced brides and grooms the mean age at remarriage generally dropped until the mid-1970's and then started upward. Between 1977 and 1985 the mean age of previously divorced brides increased 1.7 years, reaching 34.2 years of age, higher than it has ever been during the 23-year period for which these figures are available. The mean age at remarriage of previously divorced grooms also increased 1.7 years during this time, reaching 37.8 years of age, the same as it had been in 1963-65.

Age at marriage varies among States, as shown in table 8. For the reporting MRA States and the District of Columbia, the average (mean) age at first marriage varied from 22.0 to 27.5 years of age for women and 24.1 to 28.8 years of age for men. At remarriage after divorce the average age ranged from

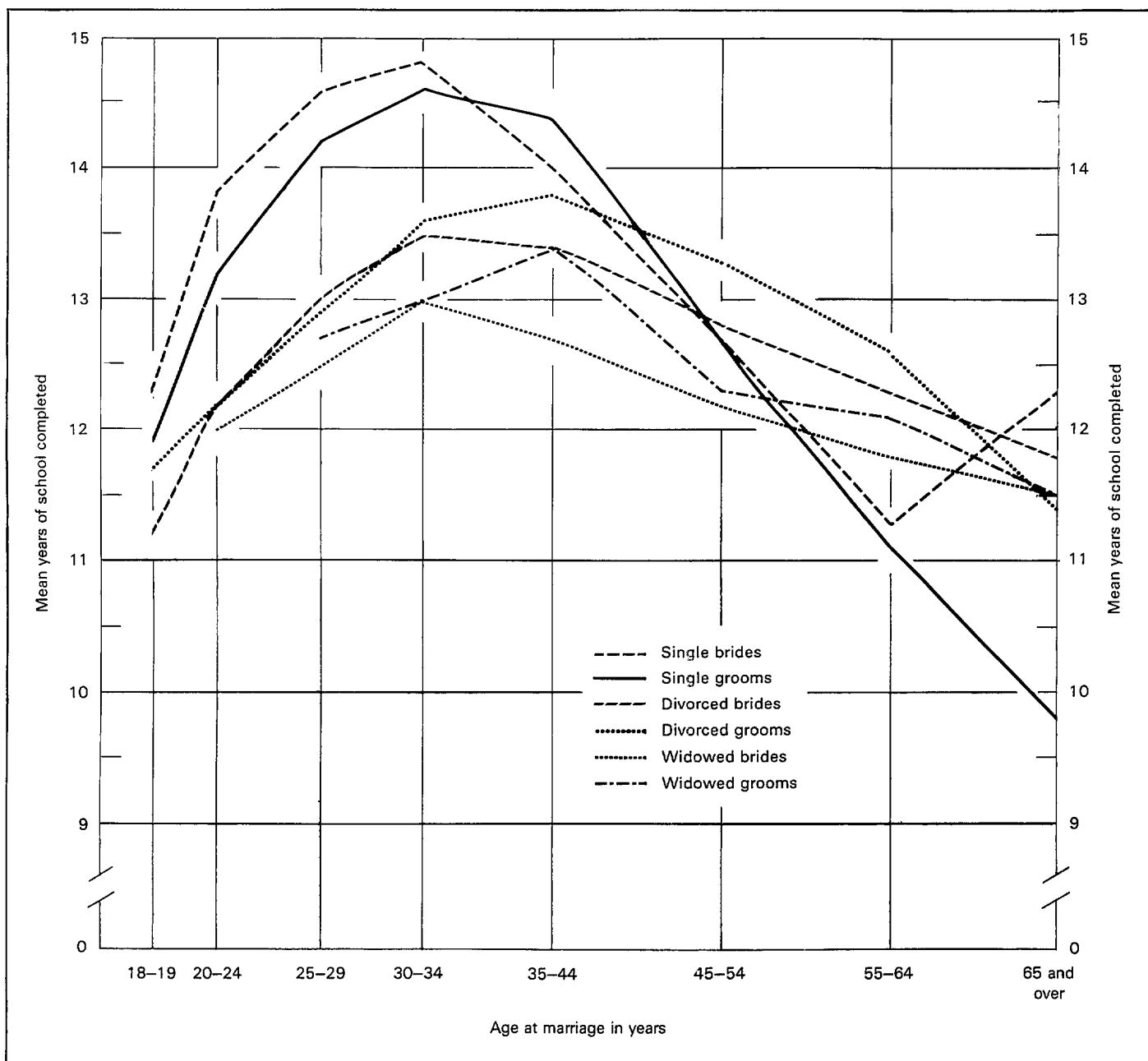


Figure 3. Mean years of school completed by single, divorced, and widowed brides and grooms by age at marriage: 21 Reporting States, 1985

32.4 to 37.0 years for women and from 35.9 to 40.6 years for men. Average age at remarriage for widowed persons ranged from 45.9 to 56.6 years for women and from 52.0 to 66.3 years for men.

**Interval to remarriage**

The interval to remarriage is shorter for divorced than for widowed persons and shorter for men than for women in either category (table 9). In 1985 the mean interval to remarriage was 3.6 years for divorced women and 3.2 years for divorced men. For previously widowed brides the interval was con-

siderably longer, 6.5 years; but for previously widowed grooms the interval was only one-half year longer, 3.7 years.

Between 1970 and 1985 the length of time spent between marriages increased by approximately 1 year for divorced women and men, and also for widowed women. For widowed men the interval between marriages increased by only one-half year.

**Race**

Race of bride and groom was reported on the marriage records of 34 States in 1985 (table 10). In this group of States,

87 percent of brides and grooms were white, 11 percent were black, and 2 percent were of other races. The proportions of marriages that were first marriages varied by race. Among white brides 62 percent were marrying for the first time compared with 73 to 72 percent for black brides and brides of other races.

Age at marriage is another characteristic that differs by race. At first marriage in 1985 white brides (23.2 years) were approximately 2 years younger than black brides (25.3 years) or brides of other races (25.1 years). The racial differences were similar for age at remarriage after divorce; on average, white brides were 33.8 years of age, black brides were 35.8 years, and brides of other races were 34.3 years. The racial differentials were reversed for previously widowed brides. White brides were oldest, 53.6 years; black brides were intermediate, 51.1; and brides of other races were youngest, 41.9 years. Grooms, although older than brides, showed similar racial patterns. The differences for age at remarriage of white and black widowed persons, in all likelihood, reflect the lower life expectancy of black men and women.

**Educational attainment**

The educational attainment of brides and grooms was reported on the marriage records of 21 States in 1985. The

records show that approximately two-fifths of brides and grooms completed their educations with exactly 12 years of school (equivalent to high-school graduation). Only 16 percent of brides and grooms had not completed high school, 24 percent of brides and 21 percent of grooms had completed 1–3 years of college, and 19 percent of brides and 23 percent of grooms were college graduates.

As shown in table 11, educational attainment varied according to previous marital status. Single brides and grooms had completed more years of education than those who were divorced, and both single and divorced brides and grooms more than brides and grooms who were previously widowed. This relationship held for all age groups under 45 years, as shown in figure 3. Figure 3 also shows that for each marital status, educational attainment rose with age at marriage, peaking in the 30–45-year age range; it then declined for older cohorts. For all brides, and for single grooms, education was greatest at ages 30–34. For divorced and widowed grooms, mean education was greatest at ages 35–44 years.

**List of detailed tables**

1. Marriages and marriage rates: United States, 1940–85 . . . . .	6	7. Median and mean age of bride and groom by previous marital status: Marriage-registration area, 1963–85 . . . . .	13
2. Marriages and marriage rates, by month: United States, 1975, 1984, and 1985 . . . . .	7	8. Mean age of bride and groom in years by previous marital status: Marriage-registration area and each registration State, 1985 . . . . .	14
3. Marriages and marriage rates: United States, each region, division, and State, 1975, 1984, and 1985 . . . . .	8	9. Median and mean interval to remarriage in years by previous marital status of bride and groom: Reporting States, 1970–85 . . . . .	15
4. Total marriage rate by marriage order of women and men: Marriage-registration area, 1972–85 . . . . .	10	10. Marriages and mean age at marriage by race and previous marital status of bride and groom: 34 reporting States, 1985 . . . . .	16
5. Marriage rates by previous marital status of women and men: Marriage-registration area, 1970–85 . . . . .	10	11. Marriages and percent distribution by educational attainment of bride and groom, according to previous marital status, and mean years of school completed: 21 reporting States, 1985 . . . . .	17
6. Marriages and percent distribution of marriages by age according to previous marital status of women and men, 1985, and marriage rates by age and previous marital status of women and men, 1983–85: Marriage-registration area . . . . .	11		

Table 1. Marriages and marriage rates: United States, 1940-85

[Data refer only to events occurring within the United States. Alaska included beginning 1959 and Hawaii beginning 1960. Beginning with 1978, data include nonlicensed marriages registered in California; see Technical notes. Rates per 1,000 population enumerated as of April 1 for census years and estimated as of July 1 for all other years]

Year	Number	Rate per 1,000—				
		Total population	Men 15 years of age and over	Women 15 years of age and over	Unmarried women 15 years and over	Unmarried women 15-44 years
1985	2,412,625	10.1	26.9	24.8	57.0	94.9
1984	2,477,192	10.5	28.1	25.8	59.5	99.0
1983	2,445,604	10.5	28.0	25.7	59.9	99.3
1982	2,456,278	10.6	28.4	26.1	61.4	101.9
1981	2,422,145	10.6	28.4	26.1	61.7	103.1
1980	2,390,252	10.6	28.5	26.1	61.4	102.6
1979	2,331,337	10.4	28.1	25.8	63.6	107.9
1978	2,282,272	10.3	28.0	25.7	64.1	109.1
1977	2,178,367	9.9	27.2	25.0	63.6	109.8
1976	2,154,807	9.9	27.4	25.2	65.2	113.4
1975	2,152,662	10.0	27.9	25.6	66.9	118.5
1974	2,229,667	10.5	29.4	27.1	72.0	128.4
1973	2,284,108	10.8	30.7	28.2	76.0	137.3
1972	2,282,154	10.9	31.3	28.8	77.9	141.3
1971	2,190,481	10.6	30.7	28.2	76.2	138.9
1970	2,158,802	10.6	31.1	28.4	76.5	140.2
1969	2,145,000	10.6	31.4	28.9	80.0	149.1
1968	2,069,000	10.4	30.8	28.3	79.1	147.2
1967	1,927,000	9.7	29.1	26.9	76.4	145.2
1966	1,857,000	9.5	28.4	26.4	75.6	145.1
1965	1,800,000	9.3	27.9	26.0	75.0	144.3
1964	1,725,000	9.0	27.1	25.3	74.6	146.2
1963	1,654,000	8.8	26.4	24.7	73.4	143.3
1962	1,577,000	8.5	25.5	23.9	71.2	138.4
1961	1,548,000	8.5	25.5	24.0	72.2	145.4
1960	1,523,000	8.5	25.4	24.0	73.5	148.0
1959	1,494,000	8.5	25.2	23.8	73.6	149.8
1958	1,451,000	8.4	24.8	23.5	72.0	146.3
1957	1,518,000	8.9	26.4	24.9	78.0	157.4
1956	1,585,000	9.5	27.8	26.4	82.4	165.6
1955	1,531,000	9.3	27.2	25.8	80.9	161.1
1954	1,490,000	9.2	26.9	25.4	79.8	154.3
1953	1,546,000	9.8	28.2	26.7	83.7	163.3
1952	1,539,318	9.9	28.3	26.8	83.2	159.9
1951	1,594,694	10.4	29.4	28.1	86.6	164.9
1950	1,667,231	11.1	30.7	29.8	90.2	166.4
1949	1,579,798	10.6	29.4	28.5	86.7	158.0
1948	1,811,155	12.4	34.0	33.0	98.5	174.7
1947	1,991,878	13.9	37.9	36.8	106.2	182.7
1946	2,291,045	16.4	44.5	42.8	118.1	199.0
1945	1,612,992	12.2	35.8	30.5	83.6	138.2
1944	1,452,394	10.9	31.2	27.8	76.5	124.5
1943	1,577,050	11.7	32.2	30.6	83.0	133.5
1942	1,772,132	13.2	35.6	34.8	93.0	147.6
1941	1,695,999	12.7	34.0	33.7	88.5	138.4
1940	1,595,879	12.1	32.3	32.3	82.8	122.4

**Table 2. Marriages and marriage rates, by month: United States, 1975, 1984, and 1985**

[Rates on an annual basis per 1,000 population]

<i>Month</i>	<i>Number</i>			<i>Rate</i>		
	<i>1985</i>	<i>1984</i>	<i>1975</i>	<i>1985</i>	<i>1984</i>	<i>1975</i>
Total .....	2,412,625	2,477,192	2,152,662	10.1	10.5	10.0
January .....	117,347	127,790	121,125	5.8	6.4	6.7
February .....	138,647	146,813	132,607	7.4	7.9	8.1
March .....	164,246	169,068	147,712	8.1	8.5	8.1
April .....	179,403	180,785	155,819	9.2	9.4	8.8
May .....	229,084	231,924	203,073	11.3	11.6	11.1
June .....	295,413	299,251	254,632	15.1	15.5	14.4
July .....	219,233	225,651	193,899	10.8	11.3	10.6
August .....	264,459	258,579	251,839	13.1	12.9	13.7
September .....	225,318	247,911	174,942	11.5	12.8	9.9
October .....	203,057	205,050	173,209	10.0	10.2	9.4
November .....	186,691	184,897	165,528	9.5	9.5	9.3
December .....	189,727	199,473	178,277	9.3	9.9	9.7

Table 3. Marriages and marriage rates: United States, each region, division, and State, 1975, 1984, and 1985

[By place of occurrence. Data are counts of marriages performed, except as noted. Rates per 1,000 population estimated as of July 1]

Region, division, and State	Number			Rate		
	1985	1984	1975	1985	1984	1975
United States . . . . .	2,412,625	2,477,192	2,152,662	10.1	10.5	10.0
Regions:						
Northeast . . . . .	428,654	436,655	384,186	8.6	8.8	7.8
Midwest <sup>2</sup> . . . . .	520,500	543,623	549,356	8.8	9.2	9.5
South . . . . .	919,147	943,007	776,727	11.2	11.7	11.2
West . . . . .	544,324	553,907	1,442,393	11.4	11.9	11.5
Northeast:						
New England . . . . .	114,331	114,784	96,761	9.0	9.1	7.9
Middle Atlantic . . . . .	314,323	321,871	287,425	8.5	8.7	7.7
Midwest:						
East North Central . . . . .	<sup>2</sup> 362,185	<sup>2</sup> 376,709	387,411	<sup>2</sup> 8.7	<sup>2</sup> 9.1	9.4
West North Central . . . . .	158,315	166,914	161,945	9.0	9.5	9.7
South:						
South Atlantic . . . . .	438,754	447,927	366,591	10.9	11.4	10.7
East South Central . . . . .	171,808	170,918	155,226	11.4	11.4	11.2
West South Central . . . . .	308,585	324,162	254,910	11.6	12.4	11.9
West:						
Mountain . . . . .	233,701	236,304	212,045	18.3	18.8	21.5
Pacific . . . . .	310,623	317,603	<sup>1</sup> 230,348	8.9	9.3	<sup>1</sup> 8.0
New England:						
Maine . . . . .	12,248	12,525	11,190	10.5	10.8	10.4
New Hampshire . . . . .	11,351	11,325	8,831	11.4	11.6	10.6
Vermont . . . . .	5,549	5,421	4,553	10.4	10.2	9.5
Massachusetts . . . . .	49,848	50,306	42,103	8.6	8.7	7.3
Rhode Island . . . . .	8,011	7,971	6,695	8.3	8.3	7.1
Connecticut . . . . .	27,324	27,236	23,389	8.6	8.6	7.6
Middle Atlantic:						
New York . . . . .	<sup>3</sup> 163,995	167,607	142,752	<sup>3</sup> 9.2	9.5	7.9
New Jersey . . . . .	61,189	62,654	53,008	8.1	8.3	7.2
Pennsylvania . . . . .	89,139	91,610	91,665	7.5	7.7	7.7
East North Central:						
Ohio . . . . .	<sup>2</sup> 94,373	<sup>2</sup> 98,646	101,135	<sup>2</sup> 8.8	<sup>2</sup> 9.2	9.4
Indiana . . . . .	51,063	53,719	56,075	9.3	9.8	10.5
Illinois . . . . .	97,712	102,432	111,459	8.5	8.9	9.9
Michigan . . . . .	79,022	80,810	82,856	8.7	8.9	9.1
Wisconsin . . . . .	40,015	41,102	35,886	8.4	8.6	7.9
West North Central:						
Minnesota . . . . .	35,059	36,223	32,261	8.4	8.7	8.2
Iowa . . . . .	24,578	26,366	25,616	8.5	9.1	8.9
Missouri . . . . .	49,484	52,464	50,147	9.8	10.5	10.5
North Dakota . . . . .	5,424	5,793	5,993	7.9	8.4	9.4
South Dakota . . . . .	7,793	8,057	11,074	11.0	11.4	16.3
Nebraska . . . . .	12,696	13,274	13,087	7.9	8.3	8.5
Kansas . . . . .	23,281	24,737	23,767	9.5	10.1	10.4
South Atlantic:						
Delaware . . . . .	5,356	5,455	3,944	8.6	8.9	6.7
Maryland . . . . .	46,063	47,193	44,776	10.5	10.9	10.8
District of Columbia . . . . .	5,039	5,488	4,911	8.1	8.8	6.9
Virginia . . . . .	66,541	66,143	54,688	11.7	11.7	10.8
West Virginia . . . . .	14,580	15,513	17,041	7.5	7.9	9.3
North Carolina . . . . .	50,542	52,170	42,310	8.1	8.5	7.6
South Carolina . . . . .	52,805	55,357	50,249	15.8	16.8	17.3
Georgia . . . . .	72,312	74,159	63,245	12.1	12.7	12.5
Florida . . . . .	125,516	126,449	85,427	11.0	11.5	10.0
East South Central:						
Kentucky . . . . .	45,976	42,149	32,068	12.3	11.3	9.2
Tennessee . . . . .	55,000	55,203	51,530	11.5	11.7	12.1
Alabama . . . . .	46,082	47,541	45,349	11.5	11.9	12.3
Mississippi . . . . .	24,750	26,025	26,279	9.5	10.0	10.9
West South Central:						
Arkansas . . . . .	31,663	32,878	24,337	13.4	14.0	11.3
Louisiana . . . . .	39,368	41,087	37,309	8.8	9.2	9.6
Oklahoma . . . . .	35,922	39,219	40,110	10.9	11.9	14.5
Texas . . . . .	201,632	210,978	153,154	12.3	13.2	12.2

See footnotes at end of table.



**Table 3. Marriages and marriage rates: United States, each region, division, and State, 1975, 1984, and 1985—Con.**

[By place of occurrence. Data are counts of marriages performed, except as noted. Rates per 1,000 population estimated as of July 1]

Region, division, and State	Number			Rate		
	1985	1984	1975	1985	1984	1975
<b>Mountain:</b>						
Montana .....	7,178	7,659	7,331	8.7	9.3	9.8
Idaho .....	12,277	13,264	12,688	12.2	13.3	15.3
Wyoming .....	5,386	5,783	5,649	10.6	11.3	14.9
Colorado .....	33,616	35,072	27,565	10.4	11.0	10.7
New Mexico .....	<sup>4</sup> 15,495	<sup>4</sup> 14,204	15,790	<sup>4</sup> 10.7	<sup>4</sup> 10.0	13.6
Arizona .....	35,723	33,321	26,558	11.2	10.9	11.6
Utah .....	17,519	17,981	14,905	10.6	10.9	12.1
Nevada .....	106,507	109,020	101,559	113.7	119.7	163.8
<b>Pacific:</b>						
Washington .....	43,771	45,080	41,807	9.9	10.4	11.6
Oregon .....	22,408	23,074	19,322	8.3	8.6	8.3
California .....	222,848	227,968	<sup>1</sup> 154,812	8.5	8.9	<sup>1</sup> 7.2
Alaska .....	6,175	6,499	4,734	11.8	13.0	12.8
Hawaii .....	15,421	14,982	9,673	14.7	14.4	10.9

<sup>1</sup>Data exclude 19,061 nonlicensed marriages registered in California; see Technical notes.

<sup>2</sup>Data are incomplete.

<sup>3</sup>Data for New York City are based on a sample; see Technical notes.

<sup>4</sup>Data are premarital health examination forms issued.

**Table 4. Total marriage rate by marriage order of women and men: Marriage-registration area, 1972-85**

[Based on sample data. Marriages per 1,000 women or men if age-sex specific rates for a given year were constant throughout their lives. Figures for marriage order not stated have been distributed. Beginning in 1977, figures exclude data for Iowa. For a description of the marriage-registration area, see Technical notes]

Year	Total marriage rate		Total first-marriage rate		Total remarriage rate	
	Women	Men	Women	Men	Women	Men
1985.....	1,113.0	1,155.5	699.3	688.9	413.7	466.6
1984.....	1,139.2	1,192.4	704.6	698.1	434.6	494.3
1983.....	1,131.9	1,189.4	703.0	697.4	428.9	492.0
1982.....	1,143.6	1,206.4	710.9	703.4	432.7	503.0
1981.....	1,113.9	1,218.0	687.2	711.4	426.7	506.6
1980.....	1,128.4	1,207.5	706.2	714.4	422.2	493.1
1979.....	1,130.0	1,243.2	704.4	739.4	425.6	503.8
1978.....	1,112.4	1,227.3	696.5	733.7	415.9	493.6
1977.....	1,098.4	1,213.9	687.6	727.7	410.8	486.2
1976.....	1,100.7	1,218.0	695.5	737.5	405.2	480.5
1975.....	1,125.7	1,246.2	720.8	774.4	404.9	471.8
1974.....	1,191.5	1,317.1	789.8	852.7	401.7	464.4
1973.....	1,249.1	1,382.3	843.4	920.0	405.7	462.3
1972.....	1,254.8	1,401.9	866.9	960.8	387.9	441.1

**Table 5. Marriage rates by previous marital status of women and men: Marriage-registration area, 1970-85**

[Based on sample data. Figures exclude data for Iowa beginning with 1977. Figures for previously divorced and previously widowed exclude data for Michigan and Ohio for all years, for South Carolina beginning with 1972, and for the District of Columbia for 1970. For a description of the marriage-registration area, see Technical notes. Rates per 1,000 population 15 years and over in specified group enumerated as of April 1 for census years and estimated as of July 1 for all other years]

Year	Previous marital status of women			Previous marital status of men		
	Single	Divorced	Widowed	Single	Divorced	Widowed
1985.....	61.5	81.8	5.7	50.1	121.6	27.7
1984.....	63.5	87.3	5.8	51.6	132.7	28.7
1983.....	63.8	91.6	6.2	51.8	142.1	30.7
1982.....	66.0	94.4	6.1	53.1	146.9	32.1
1981.....	64.9	96.3	6.5	53.8	150.8	30.8
1980.....	66.0	91.3	6.7	54.7	142.1	32.2
1979.....	67.8	104.0	7.7	56.3	165.6	35.3
1978.....	68.2	105.0	7.1	56.4	168.6	32.7
1977.....	69.2	107.3	7.6	56.7	173.4	35.3
1976.....	72.0	111.3	7.9	58.2	185.0	37.6
1975.....	75.9	117.2	8.3	61.5	189.8	40.4
1974.....	83.5	121.7	9.1	68.0	198.7	38.9
1973.....	90.9	131.0	9.3	73.9	221.3	39.3
1972.....	95.1	130.6	9.4	77.2	229.0	40.6
1971.....	93.3	132.8	9.6	75.2	230.7	42.5
1970.....	93.4	123.3	10.2	80.4	204.5	40.6

**Table 6. Marriages and percent distribution of marriages by age according to previous marital status of women and men, 1985, and marriage rates by age and previous marital status of women and men, 1983-85: Marriage-registration area**

[Based on sample data. For sampling errors of estimates and a description of the marriage-registration area, see Technical notes. Marriages of persons under 15 years of age are included in the youngest age groups; rates are based on populations that exclude persons under 15 years of age. Rates for all marriages are based on the unmarried population; for first marriages, on the never-married population; and for remarriages, on the widowed and divorced populations. Rates per 1,000 population in specified age group estimated as of July 1]

Age and previous marital status	Women					Men				
	Number	Percent	Rate <sup>1</sup>			Number	Percent	Rate <sup>1</sup>		
	1985	1985	1985	1984	1983	1985	1985	1985	1984	1983
<b>All marriages</b>										
Total .....	1,858,783	100.0	49.9	51.9	52.5	1,858,783	100.0	60.5	63.1	64.1
15-19 years .....	259,132	13.9	34.8	38.5	40.1	98,141	5.3	12.2	13.7	14.4
15-17 years .....	61,731	3.3	13.5	15.3	16.3	9,572	0.5	2.0	2.2	2.2
18-19 years .....	197,401	10.6	68.8	74.1	75.2	88,569	4.8	27.9	30.5	31.4
20-24 years .....	640,129	34.4	110.6	113.3	115.9	560,160	30.1	78.4	81.2	83.9
25-29 years .....	411,398	22.1	122.2	128.1	126.8	486,097	26.2	111.7	118.0	117.1
30-34 years .....	222,929	12.0	93.8	94.7	98.1	266,847	14.4	99.3	104.9	109.4
35-39 years .....	131,331	7.1	72.5	75.1	74.1	164,644	8.9	103.9	104.6	106.0
40-44 years .....	74,748	4.0	51.3	53.1	52.8	95,479	5.1	78.4	87.9	92.7
45-49 years .....	43,093	2.3	34.7	38.7	38.9	60,785	3.3	69.3	73.7	78.8
50-54 years .....	25,734	1.4	21.3	22.3	22.7	38,917	2.1	53.4	54.8	51.3
55-59 years .....	17,385	0.9	12.4	12.4	12.8	30,213	1.6	38.7	40.7	45.9
60-64 years .....	13,935	0.7	7.7	8.0	8.8	22,101	1.2	27.6	30.3	34.8
65 years and over .....	18,969	1.0	2.0	2.0	2.0	35,399	1.9	14.1	14.2	15.1
<b>First marriages<sup>2</sup></b>										
Total .....	1,196,119	100.0	61.5	63.5	63.8	1,185,904	100.0	50.1	51.6	51.8
15-19 years .....	248,421	20.8	34.0	37.5	38.8	95,681	8.1	12.1	13.5	14.1
15-17 years .....	60,248	5.0	13.4	15.0	15.9	9,395	0.8	2.0	2.1	2.2
18-19 years .....	188,173	15.7	67.2	72.1	72.6	86,286	7.3	27.6	30.0	30.9
20-24 years .....	554,239	46.3	102.1	104.4	106.9	514,846	43.4	74.5	77.3	79.5
25-29 years .....	268,469	22.4	103.5	106.6	105.2	373,856	31.5	99.2	102.9	100.6
30-34 years .....	82,675	6.9	66.3	64.3	61.2	130,882	11.0	70.7	72.0	69.0
35-39 years .....	25,363	2.1	37.2	38.4	38.3	42,764	3.6	51.6	46.9	45.4
40-44 years .....	8,469	0.7	24.1	23.7	21.8	13,340	1.1	25.4	27.1	27.0
45-49 years .....	3,636	0.3	13.9	15.4	13.9	6,065	0.5	16.9	16.4	18.5
50-54 years .....	1,973	0.2	7.7	7.9	9.0	3,097	0.3	11.2	11.6	10.7
55-59 years .....	1,178	0.1	5.3	6.1	7.5	2,151	0.2	6.8	8.4	10.4
60-64 years .....	962	0.1	4.4	3.7	3.3	1,707	0.1	5.7	5.4	8.0
65 years and over .....	734	0.1	0.8	0.8	0.9	1,515	0.1	2.4	2.3	2.9
<b>Remarriages<sup>2</sup></b>										
Total .....	623,867	100.0	36.1	37.6	38.4	635,086	100.0	95.7	103.1	109.1
15-19 years .....	5,526	0.9	*	*	*	800	0.1	*	*	*
20-24 years .....	69,465	11.1	254.5	248.3	244.4	31,233	4.9	247.9	229.1	241.8
25-29 years .....	134,467	21.6	183.2	193.8	186.8	101,523	16.0	191.6	215.9	223.1
30-34 years .....	136,383	21.9	123.8	127.3	140.0	130,936	20.6	163.1	178.1	206.0
35-39 years .....	104,038	16.7	93.8	95.3	92.3	119,470	18.8	161.7	172.1	175.8
40-44 years .....	65,165	10.4	59.8	62.9	63.3	80,933	12.7	119.0	133.3	143.4
45-49 years .....	38,860	6.2	40.3	45.1	46.9	53,914	8.5	105.9	118.2	120.8
50-54 years .....	23,421	3.8	25.0	26.5	26.1	35,301	5.6	79.9	83.4	77.0
55-59 years .....	15,955	2.6	13.7	13.4	13.7	27,651	4.4	60.5	61.7	66.3
60-64 years .....	12,724	2.0	8.2	8.7	9.7	20,062	3.2	40.6	44.8	49.1
65 years and over .....	17,863	2.9	2.2	2.2	2.2	33,263	5.2	18.0	18.1	18.9
<b>Previously widowed<sup>3</sup></b>										
Total .....	53,731	100.0	5.7	5.8	6.2	49,552	100.0	27.7	28.7	30.7
15-24 years .....	1,141	2.1	42.9	45.2	51.3	178	0.4	102.8	124.6	149.3
25-44 years .....	14,921	27.8				6,505	13.1			
45-64 years .....	24,714	46.0				21,760	43.9			
65 years and over .....	12,955	24.1	1.9	1.9	1.9	21,109	42.6	16.1	16.4	16.8

See footnotes at end of table.

**Table 6. Marriages and percent distribution of marriages by age according to previous marital status of women and men, 1985, and marriage rates by age and previous marital status of women and men, 1983-85: Marriage-registration area—Con.**

[Based on sample data. For sampling errors of estimates and a description of the marriage-registration area, see Technical notes. Marriages of persons under 15 years of age are included in the youngest age groups; rates are based on populations that exclude persons under 15 years of age. Rates for all marriages are based on the unmarried population; for first marriages, on the never-married population; and for remarriages, on the widowed and divorced populations. Rates per 1,000 population in specified age group estimated as of July 1]

Age and previous marital status	Women					Men				
	Number	Percent	Rate <sup>1</sup>			Number	Percent	Rate <sup>1</sup>		
	1985	1985	1985	1984	1983	1985	1985	1985	1984	1983
Remarriages—Con.										
Previously divorced <sup>3</sup> .....	485,848	100.0	81.8	87.3	91.6	499,735	100.0	121.6	132.7	142.1
15-19 years .....	4,578	0.9	*	*	*	700	0.1	*	*	*
20-24 years .....	58,529	12.0	263.6	241.5	240.4	26,513	5.3	276.2	234.8	239.5
25-29 years .....	112,933	23.2	183.6	204.1	204.4	86,756	17.4	187.8	211.7	214.4
30-34 years .....	114,354	23.5	127.8	132.0	145.3	111,606	22.3	157.9	173.1	202.0
35-39 years .....	86,122	17.7	96.7	100.3	99.3	100,769	20.2	160.0	173.9	172.6
40-44 years .....	52,051	10.7	62.9	66.9	67.0	67,509	13.5	119.1	130.1	137.7
45-49 years .....	28,694	5.9	46.1	49.5	50.8	44,417	8.9	105.8	117.8	126.6
50-54 years .....	14,310	2.9	31.0	33.0	32.4	26,528	5.3	77.8	78.2	77.2
55-59 years .....	7,757	1.6	17.4	17.6	18.9	17,379	3.5	57.0	58.8	67.1
60-64 years .....	3,833	0.8	10.2	12.3	12.9	9,423	1.9	39.4	45.8	49.3
65 years and over .....	2,687	0.6	4.8	4.8	4.9	8,135	1.6	23.8	23.9	26.2
Not stated if widowed or divorced .....	84,288	...	...	...	...	85,799	...	...	...	...
Not stated if previously married										
Total .....	38,797	...	...	...	...	37,793	...	...	...	...

<sup>1</sup>All rates exclude data for Iowa.

<sup>2</sup>Figures for first marriages and remarriages exclude data for Iowa; these data are included in "Not stated if previously married."

<sup>3</sup>Data exclude remarriages in Michigan, Ohio, and South Carolina. These data are included in "Not stated if widowed or divorced."

Table 7. Median and mean age of bride and groom by previous marital status: Marriage-registration area, 1963-85

[Based on sample data. Figures by previous marital status exclude data for Iowa beginning with 1977. Figures for previously divorced and previously widowed exclude data for Michigan and Ohio for all years, for South Carolina beginning with 1972, and for the District of Columbia for 1970. For a description of the marriage-registration area, see Technical notes]

Year	Previous marital status of bride					Previous marital status of groom				
	Total <sup>1</sup>	First marriage	Remarriage			Total <sup>1</sup>	First marriage	Remarriage		
			Total <sup>2</sup>	Previously divorced	Previously widowed			Total <sup>2</sup>	Previously divorced	Previously widowed
Median age										
1985	25.2	23.0	33.6	32.7	54.4	27.4	24.8	37.0	36.0	62.4
1984	25.0	22.8	33.3	32.5	54.2	27.2	24.6	36.8	35.9	62.4
1983	24.8	22.5	32.9	32.0	54.0	27.0	24.4	36.2	35.3	62.0
1982	24.4	22.3	32.5	31.6	54.1	26.7	24.1	35.7	34.9	61.7
1981	24.1	22.0	32.1	31.2	53.6	26.3	23.9	35.3	34.4	61.0
1980	23.7	21.8	32.0	31.0	53.6	25.9	23.6	35.2	34.0	61.2
1979	23.4	21.6	31.9	30.8	55.2	25.8	23.4	35.3	33.9	61.7
1978	23.2	21.4	31.5	30.5	52.6	25.5	23.2	35.1	33.8	59.7
1977	22.9	21.1	31.4	30.2	53.1	25.2	23.0	34.9	33.6	60.1
1976	22.7	21.0	31.7	30.1	53.0	25.0	22.9	35.1	33.7	60.0
1975	22.4	20.8	32.0	30.2	52.4	24.7	22.7	35.5	33.6	59.4
1974	22.0	20.6	32.1	30.0	51.9	24.2	22.5	35.7	33.6	59.2
1973	21.9	20.6	32.3	30.2	52.1	24.1	22.5	36.3	33.9	59.3
1972	21.7	20.5	32.8	30.3	51.4	23.8	22.4	36.5	34.0	59.1
1971	21.7	20.5	32.9	30.2	51.8	23.7	22.5	36.9	34.1	59.1
1970	21.7	20.6	33.3	30.1	51.2	23.6	22.5	37.5	34.5	58.7
1969	21.6	20.6	33.8	30.4	51.3	23.5	22.4	38.2	34.7	59.0
1968	21.5	20.6	33.8	30.7	50.6	23.6	22.4	38.3	35.1	57.9
1967	21.4	20.5	35.0	31.3	50.0	23.8	22.6	39.1	35.5	57.7
1966	21.5	20.3	35.2	31.4	50.2	23.8	22.6	39.2	35.8	57.9
1965	21.4	20.4	35.5	31.7	50.1	23.6	22.5	39.6	36.0	57.8
1964	21.4	20.4	35.6	31.7	50.3	23.6	22.4	39.7	36.4	58.0
1963	21.3	20.3	35.6	31.8	49.7	23.7	22.5	39.8	36.3	58.0
Mean age										
1985	28.0	24.0	36.0	34.2	53.0	30.6	25.9	39.8	37.8	60.8
1984	27.8	23.8	35.9	34.0	52.8	30.5	25.7	39.7	37.7	60.8
1983	27.6	23.5	35.6	33.7	52.6	30.3	25.5	39.3	37.3	60.2
1982	27.3	23.3	35.3	33.4	52.6	30.0	25.3	39.0	37.0	59.9
1981	27.0	23.0	35.0	33.0	52.2	29.8	25.0	38.7	36.6	59.5
1980	26.7	22.7	35.0	32.8	52.2	29.4	24.8	38.7	36.5	59.6
1979	26.7	22.5	35.4	32.8	53.4	29.5	24.6	38.9	36.4	60.0
1978	26.3	22.3	34.9	32.6	51.4	29.1	24.4	38.5	36.2	58.4
1977	26.2	22.2	35.0	32.5	51.8	29.0	24.3	38.6	36.1	58.9
1976	26.1	22.1	35.3	32.5	51.8	28.9	24.1	38.8	36.2	58.6
1975	25.9	21.9	35.5	32.7	51.2	28.7	24.0	39.1	36.3	58.2
1974	25.6	21.7	35.7	32.5	51.0	28.3	23.8	39.4	36.3	58.2
1973	25.5	21.7	36.0	32.8	51.0	28.1	23.8	39.6	36.4	58.1
1972	25.2	21.6	36.2	32.9	50.7	27.9	23.7	39.8	36.5	58.0
1971	25.1	21.6	36.4	32.8	50.6	27.8	23.7	40.3	36.6	57.7
1970	25.1	21.6	36.6	32.8	50.3	27.8	23.8	40.6	36.7	57.7
1969	25.1	21.6	36.9	33.0	50.4	27.7	23.8	40.9	36.9	57.7
1968	25.0	21.6	36.9	33.2	49.9	27.7	23.8	41.0	37.1	57.0
1967	25.1	21.6	37.4	33.3	49.7	28.0	24.0	41.4	37.4	56.7
1966	25.2	21.5	37.6	33.6	49.7	28.0	24.0	41.6	37.6	57.0
1965	25.2	21.6	37.7	33.6	49.7	28.1	24.0	42.0	37.8	56.7
1964	25.3	21.4	37.8	33.1	50.0	28.3	24.0	42.1	37.8	57.0
1963	25.2	21.5	37.7	33.5	49.3	28.2	24.1	42.3	37.8	56.8

<sup>1</sup>Figures include previous marital status not stated.

<sup>2</sup>Figures include divorced or widowed not stated.

Table 8. Mean age of bride and groom in years by previous marital status: Marriage-registration area and each registration State, 1985

[Based on sample data]

Year	Previous marital status of bride					Previous marital status of groom				
	Total <sup>1</sup>	First marriage	Remarriage			Total <sup>1</sup>	First marriage	Remarriage		
			Total <sup>2</sup>	Previously divorced	Previously widowed			Total <sup>2</sup>	Previously divorced	Previously widowed
Mean age										
Marriage-registration area <sup>3</sup> .....	28.1	24.0	36.1	34.3	53.3	30.8	25.9	39.9	37.9	61.1
Alabama.....	27.8	22.2	35.2	33.3	52.1	30.5	24.1	39.0	36.8	61.8
Alaska.....	28.1	23.8	33.7	33.2	45.9	30.8	26.2	37.9	37.3	52.0
California.....	28.4	24.8	37.4	35.5	56.6	31.0	26.8	41.3	39.1	63.1
Colorado.....	28.3	24.0	34.9	33.7	50.7	30.9	26.2	38.5	37.1	58.4
Connecticut.....	28.7	25.3	37.2	35.4	52.5	31.3	27.2	40.8	38.9	59.7
Delaware.....	27.9	24.3	36.1	34.4	53.6	30.4	26.0	39.7	37.6	59.7
District of Columbia.....	29.9	27.5	38.4	37.0	50.7	32.6	28.8	42.4	40.6	59.0
Florida.....	29.8	24.1	37.2	34.9	56.5	32.8	26.3	41.4	38.9	64.7
Georgia.....	28.4	23.0	35.0	33.2	53.1	31.2	25.1	38.6	37.1	61.2
Hawaii.....	29.6	25.5	35.9	35.0	48.7	32.6	27.4	40.6	39.3	57.3
Idaho.....	28.3	22.1	36.2	34.1	55.3	31.1	24.7	39.9	37.7	63.2
Illinois.....	28.0	24.4	36.0	34.3	52.2	30.5	26.3	39.7	37.7	59.3
Indiana.....	27.6	22.8	35.6	33.3	56.3	30.0	24.8	38.9	36.3	63.1
Iowa.....	27.6	---	---	---	---	29.9	---	---	---	---
Kansas.....	27.6	22.8	34.7	32.6	55.7	30.1	24.7	38.4	36.3	62.1
Kentucky.....	27.9	22.2	35.2	33.3	52.0	30.5	24.3	38.9	36.9	60.6
Louisiana.....	27.1	22.9	34.7	32.7	51.8	29.7	25.1	38.5	36.4	58.9
Maine.....	27.9	23.5	35.9	34.3	52.6	30.6	25.6	39.7	37.8	61.1
Maryland.....	28.9	24.9	37.1	35.6	51.0	31.9	26.8	41.2	39.3	60.2
Massachusetts.....	28.1	25.1	37.2	35.6	52.0	30.6	26.9	40.8	38.9	59.7
Michigan.....	27.8	23.8	36.2	---	---	30.5	25.6	40.0	---	---
Minnesota.....	27.1	23.7	36.7	34.5	52.3	29.4	25.7	40.2	37.8	59.9
Mississippi.....	27.3	22.3	34.8	32.8	53.0	30.2	24.3	39.2	37.3	60.1
Missouri.....	27.8	22.9	35.7	33.6	54.2	30.4	24.8	39.3	37.0	61.6
Montana.....	27.5	23.2	35.4	33.7	52.4	30.2	25.6	39.4	37.6	62.2
Nebraska.....	26.9	23.3	35.9	33.5	54.7	29.2	25.2	39.2	36.6	60.7
New Hampshire.....	28.5	24.4	36.1	34.6	51.7	31.3	26.4	40.1	38.5	60.3
New Jersey.....	28.5	25.4	37.6	35.7	53.8	31.3	27.3	41.3	39.1	58.9
New York.....	28.7	25.8	37.3	35.6	52.2	31.3	27.6	41.0	39.0	59.7
North Carolina.....	27.4	23.1	35.5	33.6	50.7	29.9	24.8	39.2	36.9	59.9
Ohio.....	27.7	23.4	35.7	---	---	30.4	25.3	39.3	---	---
Oregon.....	29.2	23.7	37.0	34.8	56.2	32.0	25.9	40.9	38.7	66.3
Pennsylvania.....	27.5	24.1	36.9	34.7	53.3	30.1	26.0	40.7	38.2	60.3
Rhode Island.....	28.1	24.7	36.8	35.2	52.8	30.6	26.6	40.5	38.7	58.8
South Carolina.....	28.1	22.9	35.2	---	---	30.7	24.9	39.1	---	---
South Dakota.....	27.5	22.8	36.1	33.7	52.6	30.1	25.2	39.6	37.2	60.3
Tennessee.....	28.1	22.4	35.3	33.6	51.8	30.9	24.2	39.1	37.2	60.9
Utah.....	25.8	22.0	33.9	32.4	50.7	28.3	24.1	37.9	35.9	62.9
Vermont.....	28.5	24.4	36.7	35.0	52.7	31.3	26.5	40.6	38.7	59.9
Virginia.....	28.1	23.9	35.5	33.9	50.2	30.7	25.8	39.3	37.6	58.6
West Virginia.....	26.7	22.1	35.3	33.2	51.9	29.6	24.5	39.0	36.5	61.8
Wisconsin.....	26.9	23.7	36.4	34.3	54.4	29.4	25.7	39.7	37.0	61.4
Wyoming.....	28.0	22.5	34.1	32.8	53.0	30.7	25.1	37.9	36.7	59.2

<sup>1</sup> Figures include previous marital status not stated.<sup>2</sup> Figures include divorced or widowed not stated.<sup>3</sup> Figures for previous marital status exclude data for Iowa. Figures for previously divorced and previously widowed exclude data for Michigan, Ohio, and South Carolina.

**Table 9. Median and mean interval to remarriage in years by previous marital status of bride and groom: Reporting States, 1970-85**

[Based on sample data]

Year	Previous marital status of bride			Previous marital status of groom		
	All remarriages <sup>1</sup>	Previously divorced	Previously widowed	All remarriages <sup>1</sup>	Previously divorced	Previously widowed
Median interval						
1985	2.5	2.3	4.6	2.0	2.0	2.1
1984	2.4	2.2	4.5	1.9	2.0	2.1
1983	2.3	2.1	4.3	1.8	1.8	2.0
1982	2.1	1.9	4.2	1.7	1.7	2.0
1981	2.0	1.9	4.1	1.6	1.6	2.0
1980	2.0	1.8	4.1	1.6	1.6	2.0
1979	1.9	1.7	4.3	1.5	1.4	2.0
1978	1.8	1.7	3.9	1.4	1.4	1.9
1977	1.7	1.5	4.1	1.3	1.3	1.9
1976	1.6	1.4	3.7	1.2	1.1	1.8
1975	1.6	1.3	3.7	1.2	1.1	1.7
1974	1.5	1.2	3.6	1.2	1.1	1.7
1973	1.5	1.2	3.7	1.1	1.0	1.8
1972	1.4	1.1	3.6	1.1	1.0	1.9
1971	1.4	1.1	3.6	1.1	1.0	1.8
1970	1.3	1.0	3.6	1.0	0.9	1.8
Mean interval						
1985	3.8	3.6	6.5	3.3	3.2	3.7
1984	3.6	3.4	6.2	3.2	3.1	3.7
1983	3.5	3.3	6.1	3.0	3.0	3.5
1982	3.4	3.1	6.1	2.9	2.8	3.4
1981	3.3	3.0	6.0	2.8	2.7	3.5
1980	3.2	2.9	6.0	2.7	2.6	3.5
1979	3.2	2.9	6.0	2.6	2.5	3.5
1978	3.1	2.8	5.7	2.5	2.5	3.3
1977	3.0	2.7	5.8	2.5	2.3	3.4
1976	3.0	2.6	5.6	2.4	2.3	3.3
1975	2.9	2.5	5.6	2.4	2.3	3.2
1974	2.9	2.5	5.5	2.4	2.2	3.3
1973	2.9	2.6	5.5	2.3	2.2	3.2
1972	3.0	2.5	5.7	2.3	2.2	3.4
1971	3.0	2.6	5.5	2.4	2.3	3.3
1970	2.9	2.5	5.5	2.3	2.2	3.2

<sup>1</sup> Figures include divorced or widowed not stated.

NOTE: In 1970 data on interval between marriages were reported by 18 registration States (California, Florida, Georgia, Hawaii, Illinois, Kansas, Louisiana, Montana, New Hampshire, New York, North Carolina, Pennsylvania, Rhode Island, Tennessee, Utah, Vermont, Wisconsin, and Wyoming). By 1985, 9 additional States were reporting interval between marriages (Colorado, Kentucky, Maine, Minnesota, Mississippi, Missouri, Nebraska, Oregon, and Virginia).

Table 10. Marriages and mean age at marriage by race and previous marital status of bride and groom: 34 reporting States, 1985

[Based on sample data]

Race	Total	First marriage	Remarriage			Widowed or divorced not stated	Previous marital status not stated
			Total	Previously divorced <sup>1</sup>	Previously widowed <sup>1</sup>		
<b>Bride</b>							
<b>Number</b>							
All races . . . . .	1,216,945	762,435	441,206	373,783	42,025	25,398	13,304
White . . . . .	1,042,819	640,182	392,735	333,414	37,256	22,065	9,902
Black . . . . .	132,458	96,139	35,471	28,815	3,733	2,923	848
Other races . . . . .	18,014	12,838	5,052	4,357	349	346	124
Race not stated . . . . .	23,654	13,276	7,948	7,197	687	64	2,430
<b>Groom</b>							
All races . . . . .	1,216,945	760,901	443,375	381,224	37,795	24,356	12,669
White . . . . .	1,040,331	639,599	391,259	337,085	33,429	20,745	9,473
Black . . . . .	137,462	96,165	40,380	33,545	3,564	3,271	917
Other races . . . . .	16,207	12,272	3,811	3,365	242	204	124
Race not stated . . . . .	22,945	12,865	7,925	7,229	560	136	2,155
<b>Bride</b>							
<b>Mean age</b>							
All races . . . . .	28.0	23.6	35.9	34.0	53.3	35.1	25.3
White . . . . .	28.0	23.2	35.7	33.8	53.6	34.8	24.9
Black . . . . .	28.6	25.3	37.5	35.8	51.1	37.0	28.1
Other races . . . . .	27.8	25.1	34.9	34.3	41.9	35.5	23.2
Race not stated . . . . .	28.1	24.0	35.5	33.9	53.2	29.2	26.2
<b>Groom</b>							
All races . . . . .	30.7	25.5	39.7	37.6	61.2	39.1	27.4
White . . . . .	30.7	25.3	39.6	37.5	61.5	38.8	26.9
Black . . . . .	31.2	27.1	41.0	39.1	58.4	41.1	29.3
Other races . . . . .	29.8	27.2	38.6	37.5	54.7	37.4	27.9
Race not stated . . . . .	30.6	26.0	38.5	36.7	61.7	37.1	29.2

<sup>1</sup>Data exclude remarriages in South Carolina. These data are included in "Widowed or divorced not stated."

NOTE: Of the 42 States in the marriage-registration area in 1985, 34 reported race of bride and groom—Alabama, Alaska, Connecticut, Delaware, Florida, Georgia, Hawaii, Idaho, Illinois, Indiana, Kansas, Kentucky, Louisiana, Maine, Minnesota, Mississippi, Missouri, Montana, Nebraska, New Hampshire, New Jersey, North Carolina, Oregon, Pennsylvania, Rhode Island, South Carolina, South Dakota, Tennessee, Utah, Vermont, Virginia, West Virginia, Wisconsin, and Wyoming. Those registration areas that did not report race are California, Colorado, the District of Columbia, Iowa, Maryland, Massachusetts, Michigan, New York, and Ohio.



Table 11. Marriages and percent distribution by educational attainment of bride and groom, according to previous marital status, and mean years of school completed: 21 reporting States, 1985

Previous marital status	Years of school completed								Mean	
	Total	0-8 years	9-11 years	12 years	13-15 years	16 years	17 years or more	Not stated		
Bride										
		Number								
Total .....	761,314	20,141	88,858	282,187	160,636	87,224	41,921	80,347	13.4	
Single .....	498,400	8,919	52,990	175,585	108,664	69,703	28,487	54,052	13.6	
Previously married .....	260,621	11,187	35,747	106,246	51,767	17,427	13,375	24,872	13.0	
Divorced .....	233,553	7,711	31,511	96,479	47,617	15,961	12,606	21,668	13.1	
Widowed .....	25,146	3,381	4,004	9,222	3,871	1,411	735	2,522	12.1	
Widowed or divorced not stated .....	1,922	95	232	545	279	55	34	682	...	
Not stated .....	2,293	35	121	356	205	94	59	1,423	...	
Groom										
Total .....	761,314	28,578	80,102	278,584	140,468	92,738	60,694	80,150	13.5	
Single .....	497,146	11,662	50,470	184,067	93,485	66,404	37,705	53,353	13.6	
Previously married .....	262,154	16,903	29,541	94,301	46,838	26,208	22,930	25,433	13.2	
Divorced .....	237,487	11,944	26,616	87,668	43,801	24,133	21,041	22,284	13.3	
Widowed .....	22,995	4,853	2,827	6,162	2,894	1,957	1,844	2,458	12.0	
Widowed or divorced not stated .....	1,672	106	98	471	143	118	45	691	...	
Not stated .....	2,014	13	91	216	145	126	59	1,364	...	
Bride										
		Percent distribution								
Total .....	100.0	3.0	13.0	41.4	23.6	12.8	6.2	...	12.8	
Single .....	100.0	2.0	11.9	39.5	24.5	15.7	6.4	...	12.9	
Previously married .....	100.0	4.7	15.2	45.1	22.0	7.4	5.7	...	12.7	
Divorced .....	100.0	3.6	14.9	45.5	22.5	7.5	5.9	...	12.7	
Widowed .....	100.0	14.9	17.7	40.8	17.1	6.2	3.2	...	12.4	
Groom										
Total .....	100.0	4.2	11.8	40.9	20.6	13.6	8.9	...	12.8	
Single .....	100.0	2.6	11.4	41.5	21.1	15.0	8.5	...	12.9	
Previously married .....	100.0	7.1	12.5	39.8	19.8	11.1	9.7	...	12.8	
Divorced .....	100.0	5.6	12.4	40.7	20.4	11.2	9.8	...	12.8	
Widowed .....	100.0	23.6	13.8	30.0	14.1	9.5	9.0	...	12.4	

NOTE: Of the 42 States in the marriage-registration area in 1985, 21 reported education of bride and groom—California, Connecticut, Hawaii, Illinois, Kansas, Kentucky, Louisiana, Maine, Mississippi, Missouri, Montana, Nebraska, New Hampshire, North Carolina, Rhode Island, Tennessee, Utah, Vermont, Virginia, Wisconsin, and Wyoming.

## Technical notes

### Place and time of occurrence

Marriages and marriage rates for States and other areas are by place of occurrence. Marriages are those performed during the calendar year.

### Sources of data

Figures in tables 1–3 are based on totals reported by States and counties, except for New York City, where the count of marriages was taken from the 100-percent sample of marriage records. Figures in tables 4–10 are based on data tabulated from State-coded data tapes and from probability samples of records selected and coded in the National Center for Health Statistics (NCHS) from copies of the records sent by States participating in the marriage-registration area (MRA). In 1985 the MRA consisted of the District of Columbia and all except eight States—Arizona, Arkansas, Nevada, New Mexico, North Dakota, Oklahoma, Texas, and Washington. In 1974 the MRA consisted of the District of Columbia and all States except nine; Colorado joined in 1979. Marriages performed in the MRA included 80 percent of the marriages registered in the United States in both 1975 and 1985.

### Nonlicensed (confidential) marriages for California

Section 4213 of the California Civil Code allows unmarried couples who have been living together to be married confidentially without obtaining a marriage license or health certificate. In March 1972 this section was amended to require county clerks to keep sealed records of these marriages and to report periodically the total number to the California State Department of Health Services. Since reporting began, nonlicensed marriages have increased rapidly, from 2,857 in 1973 to 77,002 in 1985. NCHS has not included the nonlicensed California marriages in totals or rates for years prior to 1978. However, beginning with final statistics for 1978, nonlicensed marriages, which totaled 37,462 in that year, are included in the national and geographic totals and rates.

### Marriage sample

Twelve States—Florida, Illinois, Maine, Missouri, Montana, Nebraska, New Hampshire, New York (except New York City), Rhode Island, South Carolina, Vermont, and Virginia—supplied State-coded data tapes of all their marriage records through the Vital Statistics Cooperative Program, and 100 percent of these records were used by NCHS. For all other States in the MRA, records were sampled at rates designed to give a sample of at least 2,500 for each State. All records were included in the samples for Alaska, Delaware, and the District of Columbia, where totals of less than 5,000 marriages had been expected, and for New York City. All other States were sampled at 5, 10, 20,

or 50 percent, depending on the number of marriages in the State. The total sample size, including records supplied through the Vital Statistics Cooperative Program, was 743,230 marriages. Sampling errors shown in table I are for frequencies that equal a specified percent of the total MRA marriages.

Nonlicensed marriages registered in California are not available for inclusion in the MRA marriage sample. The 5-percent sample of California marriages for 1985 was drawn only from licensed marriages. The corresponding weights for sample records were based on these totals. Because no information is available on the characteristics of persons obtaining nonlicensed marriages, no accurate estimate is available for the bias introduced in sample estimates by the omission of these marriages.

### Sampling errors

All statistics for the MRA are estimates based on the systematic sample of marriages described above; therefore, these statistics are subject to sampling errors. The sampling error is a measure of variation that occurs by chance between sample estimates and the actual quantity being estimated. Chances are about 68 out of 100 that an estimate would differ from the true value by less than the sampling error, and about 95 out of 100 that the difference would be less than twice the sampling error.

### Population denominators

Marriage rates for the MRA by age, sex, and previous marital status for 1983, 1984, and 1985 are based on unpublished population estimates as of July 1 prepared by the U.S. Bureau of

**Table I. Approximate sampling errors of estimated number of marriages shown in table 6: Marriage-registration area, 1985**

<i>Percent of total MRA marriages in subclass</i>	<i>Sampling error</i>
1 or 99 .....	407
2 or 98 .....	573
3 or 97 .....	698
4 or 96 .....	802
5 or 95 .....	892
7 or 93 .....	1,044
10 or 90 .....	1,228
15 or 85 .....	1,461
20 or 80 .....	1,637
25 or 75 .....	1,772
50 .....	2,046

HOW TO USE THE SAMPLING ERROR TABLE: The total number of MRA marriages in 1985 (excluding nonlicensed California marriages) was 1,858,783. For any estimate of marriages shown in table 6, determine its percent of the total MRA marriages. Then look in the table of sampling errors for the row containing the computed percent to determine the sampling error for the estimated number of marriages for the year. For example, in 1985 there were an estimated 623,867 remarriages of women, or 34.3 percent of all 1985 MRA marriages. Because 34.3 is between 25 and 50 percent, the sampling error is between 1,772 and 2,046, or, by interpolation, 1,874 remarriages. The chances are about 68 out of 100 that the actual number of 1985 remarriages is between 621,993 and 625,741 (623,867 ± 1,874).

the Census.<sup>2</sup> National and State rates for 1985 are based on population estimates as of July 1 published by the U.S. Bureau of the Census.<sup>3</sup>

**Computation of percent distributions, medians, and means**

Figures for marriage order and previous marital status not stated were subtracted from figures for marriages used as denom-

inators before medians were computed. Computations of median and mean age at marriage were based on tabulations of ungrouped data.

**Nonreporting bias**

Age was more than 99 percent complete on marriage records, but in 1985 marriage order for brides was not stated on 2 percent of the MRA records. No allocation of missing data was done before rates were calculated. The percent not stated for grooms was similar.

<sup>2</sup>U.S. Bureau of the Census. 1986. Estimates of the population of the United States, by age, sex, and race: 1980 to 1985. *Current Population Reports*. Series P-25, No. 985. Washington: U.S. Government Printing Office.

<sup>3</sup>U.S. Bureau of the Census. 1987. State population and household estimates, with age, sex, and components of change: 1981-86. *Current Population Reports*. Series P-25, No. 1010. Washington: U.S. Government Printing Office.

---

**Symbols**

- - - Data not available
  - . . . Category not applicable
  - Quantity zero
  - 0.0 Quantity more than zero but less than 0.05
  - Z Quantity more than zero but less than 500 where numbers are rounded to thousands
  - \* Figure does not meet standards of reliability or precision
-

This report represents summary tabulations from the final marriage statistics for 1985. More detailed tabulations for 1985 will be published in *Vital Statistics of the United States, Volume III—Marriage and Divorce*. Prior to the publication of that volume, the National Center for Health Statistics will respond to requests for unpublished data whenever possible.

---

**Suggested citation**

National Center for Health Statistics: Advance report of final marriage statistics, 1985. *Monthly Vital Statistics Report*. Vol. 37, No. 1 Supp. DHHS Pub. No. (PHS) 88-1120. Public Health Service. Hyattsville, Md.

---

**Copyright information**

This report may be reprinted without further permission.

---

U.S. DEPARTMENT OF HEALTH AND  
HUMAN SERVICES  
Public Health Service  
Centers for Disease Control  
National Center for Health Statistics  
3700 East-West Highway  
Hyattsville, Maryland 20782

FIRST CLASS MAIL  
POSTAGE & FEES PAID  
PHS/NCHS  
Permit No. G-281

---

OFFICIAL BUSINESS  
PENALTY FOR PRIVATE USE, \$300

---

To receive this publication regularly, contact the National Center for Health Statistics by calling 301 436-8500

---