

---

**Example 5: Variance estimates for Percentages: Births (Pregnancy file). Variance estimates in SAS, SUDAAN, STATA, and WesVar for the Percentage of Pregnancies that were Wanted, Mistimed, or Unwanted for Females by Race and Hispanic Origin and Age at Pregnancy Outcome**

---

Following are the programs and output for an analysis of the percentage of pregnancies in Cycle 6 of the NSFG that were wanted, mistimed, or unwanted. A cross-tabulation of the wantedness of the pregnancy by age at pregnancy outcome (in three categories: under 20, 20-24, and 25-44) and race and Hispanic origin was generated by SAS 9.1, SUDAAN 8.0.2, STATA 8.0, and WesVar 4.1. The estimates calculated are equivalent across software. However, due to the specific methods used in calculations, standard errors vary slightly across packages and design effects will vary more substantially.

SAS data files were converted to STATA 8.0 and SPSS formats using DBMS/COPY 8.0. Variables in upper case are original NSFG Cycle 6 variables or recodes. Variables in lower case represent variables that were recoded as part of the variance estimation program. Library and file names are generic and it is assumed the user will apply names specific to his or her computing environment. Formatting and library options have been deleted; preferences will vary across user organizations.

### **SAS 9.1**

The DATA and SET steps create a dataset which contains the variables for pregnancies to be used in the analysis: age at pregnancy outcome ('agepregx'), wantedness of pregnancy ('wantresp'), and race and Hispanic origin (HISPRACE).

The PROC SURVEYFREQ produces a cross-tabulation of unweighted and weighted cell counts for the variables (HISPRACE, 'agepregx', and 'wantresp') specified in the TABLE statement. The WEIGHT statement identifies the weight variable FINALWGT. PROC SURVEYFREQ calculates standard errors appropriate to the complex sample design identified by the STRATUM and CLUSTER statements. The specification of ROW in the TABLE statement limits the percentages to the row; DEFF requests calculation of design effects for the row percentages.

#### **SAS 9.1 Program**

```
data NSFG.EX5;
set NSFG.PREG;
if AGEPEG ne . then agepreg_100=int(AGEPEG/100);
if agepreg_100 ne . then do;
    if agepreg_100 LT 20 then agepregx=1;
    if 20 le agepreg_100 le 24 then agepregx=2;
    if agepreg_100 ge 25 then agepregx=3;
end;
if WANTRESP=1 then wantresp=4;
if WANTRESP=2 then wantresp=1;
if WANTRESP=3 then wantresp=2;
if WANTRESP=4 then wantresp=4;
if WANTRESP=5 then wantresp=3;
if WANTRESP=6 then wantresp=4;
run;

PROC SURVEYFREQ DATA=nsfg.EX5;
STRATUM SEST;
CLUSTER SECU_P;
WEIGHT FINALWGT;
TABLE HISPRACE*agepregx*wantresp / ROW DEFF;
RUN;
```

Design effects are greater than 1.0 for all row proportions due to clustering in the selection and an increase in variance due to weighting.

**SAS 9.1 Output**

The SURVEYFREQ Procedure

Data Summary

Number of Strata                   84  
 Number of Clusters               168  
 Number of Observations       13593  
 Sum of Weights                   111413968

Table of agepregx by wantrespx  
 Controlling for HISPRACE=HISPANIC

agepregx	wantrespx	Frequency	Weighted Frequency	Std Dev of Wgt Freq	Percent	Std Err of Percent	Design Effect	Row Percent	Std Err of Row Percent
15-19	Wanted	238	1379985	195039	7.6622	0.8905	14.8407	28.9615	3.3125
	Mistimed	349	1985184	227460	11.0225	1.0804	15.7566	41.6626	3.8771
	Unwanted	200	1092503	159820	6.0660	0.8128	15.3516	22.9281	2.7961
	Other	57	307230	66788	1.7059	0.3376	9.0017	6.4478	1.1939
	Total	844	4764903	374926	26.4566	1.0383	7.3355	100.000	
20-24	Wanted	508	2962551	247085	16.4492	0.9106	7.9880	47.2551	2.4480
	Mistimed	276	1560885	137404	8.6666	0.8149	11.1072	24.8974	2.0668
	Unwanted	252	1235293	130871	6.8588	0.6579	8.9705	19.7039	1.7061
	Other	73	510538	77421	2.8347	0.4127	8.1854	8.1435	1.1496
	Total	1109	6269268	355576	34.8094	1.1566	7.8052	100.000	
25-44	Wanted	692	4013501	303032	22.2845	1.0381	8.2390	57.5320	1.9856
	Mistimed	202	1058623	126476	5.8779	0.5446	7.0967	15.1750	1.3166
	Unwanted	231	1207221	133447	6.7030	0.6458	8.8297	17.3051	1.6979
	Other	124	696770	79036	3.8687	0.4021	5.7562	9.9879	1.0501
	Total	1249	6976115	454678	38.7341	0.9790	5.3476	100.000	
Total	Wanted	1438	8356038	628922	46.3959	1.8096	17.4341		
	Mistimed	827	4604692	357760	25.5670	1.5298	16.2813		
	Unwanted	683	3535017	328781	19.6278	1.5045	18.9978		
	Other	254	1514538	172883	8.4093	0.8339	11.9527		
	Total	3202	18010285	1044590	100.000				

**SAS 9.1 Output Cont.**

The SURVEYFREQ Procedure  
 Table of agepregx by wantrespx  
 Controlling for HISPRACE=NON-HISPANIC WHITE

agepregx	wantrespx	Frequency	Weighted Frequency	Std Dev of Wgt Freq	Percent	Std Err of Percent	Design Effect	Row Percent	Std Err of Row Percent
15-19	Wanted	198	2114206	238951	3.1273	0.3495	5.3396	17.6386	1.5392
	Mistimed	730	7381542	604437	10.9187	0.5933	4.7912	61.5835	2.0672
	Unwanted	249	2228434	229442	3.2963	0.3472	5.0068	18.5916	1.8283
	Other	25	262049	54651	0.3876	0.0786	2.1208	2.1863	0.4496
	Total	1202	11986232	808043	17.7300	0.8363	6.3479	100.000	
20-24	Wanted	794	9529473	671737	14.0959	0.7752	6.5704	47.4725	2.0120
	Mistimed	645	6766104	496335	10.0084	0.4943	3.5921	33.7064	1.7419
	Unwanted	284	2838981	261109	4.1994	0.3775	4.6908	14.1428	1.1574
	Other	96	939116	128943	1.3891	0.1863	3.3553	4.6783	0.6375
	Total	1819	20073675	1039630	29.6928	0.7709	3.7689	100.000	
25-44	Wanted	1970	22152370	1342669	32.7676	1.1831	8.4122	62.3229	1.5343
	Mistimed	457	4905673	423118	7.2564	0.4717	4.3780	13.8015	0.8552
	Unwanted	341	4008204	470464	5.9289	0.5892	8.2414	11.2766	1.1358
	Other	420	4478270	425142	6.6242	0.5462	6.3851	12.5990	1.0301
	Total	3188	35544517	1982663	52.5772	1.1423	6.9284	100.000	
Total	Wanted	2962	33796050	1712443	49.9909	1.0581	5.9298		
	Mistimed	1832	19053319	1307606	28.1835	1.0486	7.1920		
	Unwanted	874	9075620	689171	13.4246	0.8540	8.3085		
	Other	541	5679435	483457	8.4010	0.6087	6.3749		
	Total	6209	67604424	3308719	100.000				

Controlling for HISPRACE=NON-HISPANIC BLACK

agepregx	wantrespx	Frequency	Weighted Frequency	Std Dev of Wgt Freq	Percent	Std Err of Percent	Design Effect	Row Percent	Std Err of Row Percent
15-19	Wanted	179	986738	114909	5.4990	0.5419	7.4814	17.6748	1.7145
	Mistimed	482	2637954	271820	14.7011	1.1794	14.6866	47.2518	2.8499
	Unwanted	329	1678180	172421	9.3523	0.7383	8.5119	30.0601	2.2433
	Other	42	279884	76528	1.5598	0.3959	13.5147	5.0134	1.2710
	Total	1032	5582757	434484	31.1122	1.2375	9.4599	100.000	
20-24	Wanted	385	2195055	210273	12.2328	0.8828	9.6097	34.9039	2.3268
	Mistimed	362	1936522	157960	10.7920	0.7820	8.4100	30.7930	1.9330
	Unwanted	331	1860386	199317	10.3677	0.7515	8.0474	29.5823	1.8885
	Other	53	296883	62096	1.6545	0.3153	8.0876	4.7208	0.8841
	Total	1131	6288846	448525	35.0471	1.1502	7.6941	100.000	
25-44	Wanted	504	2682702	227368	14.9504	0.9189	8.7926	44.1788	2.3609
	Mistimed	208	1044496	131578	5.8209	0.6340	9.7093	17.2008	1.8002
	Unwanted	332	1846486	230188	10.2903	0.9963	14.2356	30.4080	2.2634
	Other	84	498690	84738	2.7792	0.4216	8.7090	8.2124	1.0863
	Total	1128	6072373	498250	33.8407	1.5810	14.7810	100.000	
Total	Wanted	1068	5864495	438856	32.6822	1.4278	12.2690		
	Mistimed	1052	5618972	405960	31.3140	1.4105	12.2466		
	Unwanted	992	5385052	473241	30.0104	1.3786	11.9805		
	Other	179	1075458	165081	5.9934	0.7605	13.5896		
	Total	3291	17943976	1181749	100.000				

**SAS 9.1 Output Cont.**

The SURVEYFREQ Procedure  
 Table of agepregx by wantrespx  
 Controlling for HISPRACE=NON-HISPANIC OTHER

agepregx	wantrespx	Frequency	Weighted Frequency	Std Dev of Wgt Freq	Percent	Std Err of Percent	Design Effect	Row Percent	Std Err of Row Percent
15-19	Wanted	24	243542	77398	4.6983	1.6492	80.4298	20.4483	7.0047
	Mistimed	58	728518	199597	14.0542	2.5455	71.0222	61.1680	6.1461
	Unwanted	15	127350	28876	2.4568	0.6792	25.4867	10.6926	3.4314
	Other	7	91601	78784	1.7671	1.3391	136.7630	7.6911	5.3994
	Total	104	1191012	265967	22.9763	3.1259	73.1038	100.000	
20-24	Wanted	70	760398	173365	14.6692	2.4661	64.3290	39.9117	5.8160
	Mistimed	67	769618	237895	14.8470	2.9629	91.9372	40.3956	6.5613
	Unwanted	34	221754	44999	4.2780	1.0320	34.4357	11.6394	3.1180
	Other	16	153430	49024	2.9599	0.8554	33.7281	8.0532	2.3201
	Total	187	1905200	372314	36.7541	3.0081	51.5401	100.000	
25-44	Wanted	137	1029368	159977	19.8580	2.8364	66.9325	49.3126	4.4462
	Mistimed	39	356174	80109	6.8711	1.4509	43.5586	17.0628	3.3559
	Unwanted	39	347915	84291	6.7118	1.5382	50.0294	16.6671	3.3878
	Other	33	353976	82540	6.8287	1.5296	48.6852	16.9575	3.1736
	Total	248	2087434	264951	40.2696	4.3176	102.6125	100.000	
Total	Wanted	231	2033309	269886	39.2255	3.8255	81.2792		
	Mistimed	164	1854310	441989	35.7723	4.5154	117.4903		
	Unwanted	88	697020	98525	13.4465	2.2047	55.2949		
	Other	56	599007	137775	11.5557	1.6486	35.2067		
	Total	539	5183646	744668	100.000				

**SUDAAN 8.0.2**

A SAS-callable version of SUDAAN 8.0.2 was used to calculate the estimates for this example. The DATA and SET steps used to create a dataset and the variables needed for this analysis ('agepregx' and 'wantrespx'), are identical to those used above in the SAS 9.1 program and are omitted for this program.

The PROC CROSSTAB procedure produces a frequency cross-tabulation of unweighted and weighted cell counts for the analysis variables (i.e. HISPRACE, 'agepregx' and 'wantrespx') specified in the TABLE statement. The DESIGN used in this computation is specified as WR, with replacement. By specifying the option DEFF in the CROSSTAB statement, design effects will be calculated. The NEST statement specifies the strata (SEST) and cluster (SECU\_P) variables for calculating standard errors appropriate to the complex sample design. The WEIGHT statement identifies FINALWGT for estimating the weighted frequency. The specification of NSUM, WSUM, ROWPER, SEROW, and DEFFROW in the PRINT statement limits printed output to row percentages, standard errors of row percentages, and design effects for row percentages.

**SUDAAN 8.0.2 Program**

```
(same recode as required in SAS 9.1)

proc sort data=NSFG.EX5;
by SEST SECU_P;
proc crosstab data=NSFG.EX5 design=wr deff;
nest SEST SECU_P;
weight FINALWGT;
subgroup HISPRACE agepregx wantrespx;
level 4,3,4;
tables HISPRACE * agepregx * wantrespx;
print nsum wsum rowper serow deffrow;
run;
```

The estimated percentages of the wantedness of pregnancies by age at pregnancy outcome and race and Hispanic origin are identical to those from SAS 9.1.

**SUDAAN 8.0.2 Output**

S U D A A N  
Software for the Statistical Analysis of Correlated Data  
Copyright Research Triangle Institute January 2003  
Release 8.0.2

Number of observations read : 13593 Weighted count :111413968  
Denominator degrees of freedom : 84

Variance Estimation Method: Taylor Series (WR)  
by: RACE AND HISPANIC ORIGIN, AGEPEGEX, WANTRESPX.

for: RACE AND HISPANIC ORIGIN = Total.

AGEPEGEX		WANTRESPX		
		Total	Wanted	Mistimed
Total	Sample Size	13241.0000	5699.0000	3875.0000
	Weighted Size	108742330.8633	50049891.0176	31131293.3960
	Row Percent	100.0000	46.0261	28.6285
	SE Row Percent	0.0000	0.8464	0.8253
	DEFF Row Percent			
	#4	.	3.8183	4.4141
15-19	Sample Size	3182.0000	639.0000	1619.0000
	Weighted Size	23524903.7621	4724472.2256	12733198.6754
	Row Percent	100.0000	20.0829	54.1265
	SE Row Percent	0.0000	1.1804	1.6252
	DEFF Row Percent			
	#4	.	2.7626	3.3849
20-24	Sample Size	4246.0000	1757.0000	1350.0000
	Weighted Size	34536988.2308	15447477.1500	11033129.1859
	Row Percent	100.0000	44.7273	31.9458
	SE Row Percent	0.0000	1.3346	1.2572
	DEFF Row Percent			
	#4	.	3.0592	3.0869
25-44	Sample Size	5813.0000	3303.0000	906.0000
	Weighted Size	50680438.8704	29877941.6420	7364965.5346
	Row Percent	100.0000	58.9536	14.5322
	SE Row Percent	0.0000	1.1762	0.6891
	DEFF Row Percent			
	#4	.	3.3236	2.2226

**SUDAAN 8.0.2 Output Cont.**

Variance Estimation Method: Taylor Series (WR)  
 by: RACE AND HISPANIC ORIGIN, AGEPEGX, WANTRESPX.  
 for: RACE AND HISPANIC ORIGIN = Total.

AGEPEGX		WANTRESPX Unwanted	Other
Total	Sample Size	2637.0000	1030.0000
	Weighted Size	18692707.6908	8868438.7588
	Row Percent	17.1899	8.1555
	SE Row Percent	0.6603	0.4401
	DEFF Row Percent		
	#4	4.0557	3.4246
15-19	Sample Size	793.0000	131.0000
	Weighted Size	5126467.4723	940765.3887
	Row Percent	21.7917	3.9990
	SE Row Percent	1.2889	0.5533
	DEFF Row Percent		
	#4	3.1014	2.5371
20-24	Sample Size	901.0000	238.0000
	Weighted Size	6156414.1675	1899967.7274
	Row Percent	17.8256	5.5013
	SE Row Percent	0.8654	0.4585
	DEFF Row Percent		
	#4	2.1710	1.7170
25-44	Sample Size	943.0000	661.0000
	Weighted Size	7409826.0510	6027705.6427
	Row Percent	14.6207	11.8936
	SE Row Percent	0.9180	0.7751
	DEFF Row Percent		
	#4	3.9240	3.3328

**SUDAAN 8.0.2 Output Cont.**

Variance Estimation Method: Taylor Series (WR)  
 by: RACE AND HISPANIC ORIGIN, AGEPRGX, WANTRESPX.  
 for: RACE AND HISPANIC ORIGIN = HISPANIC.

AGEPRGX		WANTRESPX Total	Wanted	Mistimed
Total	Sample Size	3202.0000	1438.0000	827.0000
	Weighted Size	18010285.3611	8356037.9350	4604692.1967
	Row Percent	100.0000	46.3959	25.5670
	SE Row Percent	0.0000	1.8096	1.5298
	DEFF Row Percent			
	#4	.	4.2163	3.9375
15-19	Sample Size	844.0000	238.0000	349.0000
	Weighted Size	4764902.9785	1379985.4535	1985184.3747
	Row Percent	100.0000	28.9615	41.6626
	SE Row Percent	0.0000	3.3125	3.8771
	DEFF Row Percent			
	#4	.	4.5013	5.2199
20-24	Sample Size	1109.0000	508.0000	276.0000
	Weighted Size	6269267.7059	2962551.0956	1560885.1431
	Row Percent	100.0000	47.2551	24.8974
	SE Row Percent	0.0000	2.4480	2.0668
	DEFF Row Percent			
	#4	.	2.6665	2.5334
25-44	Sample Size	1249.0000	692.0000	202.0000
	Weighted Size	6976114.6767	4013501.3858	1058622.6790
	Row Percent	100.0000	57.5320	15.1750
	SE Row Percent	0.0000	1.9856	1.3166
	DEFF Row Percent			
	#4	.	2.0155	1.6819

**SUDAAN 8.0.2 Output Cont.**

Variance Estimation Method: Taylor Series (WR)  
 by: RACE AND HISPANIC ORIGIN, AGEPEGX, WANTRESPX.

for: RACE AND HISPANIC ORIGIN = HISPANIC.

AGEPEGX		WANTRESPX Unwanted	Other
Total	Sample Size	683.0000	254.0000
	Weighted Size	3535016.9860	1514538.2434
	Row Percent	19.6278	8.4093
	SE Row Percent	1.5045	0.8339
	DEFF Row Percent		
	#4	4.5945	2.8907
15-19	Sample Size	200.0000	57.0000
	Weighted Size	1092502.9664	307230.1840
	Row Percent	22.9281	6.4478
	SE Row Percent	2.7961	1.1939
	DEFF Row Percent		
	#4	3.7340	1.9943
20-24	Sample Size	252.0000	73.0000
	Weighted Size	1235293.0266	510538.4405
	Row Percent	19.7039	8.1435
	SE Row Percent	1.7061	1.1496
	DEFF Row Percent		
	#4	2.0402	1.9592
25-44	Sample Size	231.0000	124.0000
	Weighted Size	1207220.9930	696769.6189
	Row Percent	17.3051	9.9879
	SE Row Percent	1.6979	1.0501
	DEFF Row Percent		
	#4	2.5163	1.5318



**SUDAAN 8.0.2 Output Cont.**

Variance Estimation Method: Taylor Series (WR)  
 by: RACE AND HISPANIC ORIGIN, AGEPEGX, WANTRESPX.  
 for: RACE AND HISPANIC ORIGIN = NON-HISPANIC WHITE.

AGEPEGX		WANTRESPX Total	Wanted	Mistimed
Total	Sample Size	6209.0000	2962.0000	1832.0000
	Weighted Size	67604423.6709	33796049.6211	19053319.1161
	Row Percent	100.0000	49.9909	28.1835
	SE Row Percent	0.0000	1.0581	1.0486
	DEFF Row Percent			
	#4	.	2.7808	3.3728
15-19	Sample Size	1202.0000	198.0000	730.0000
	Weighted Size	11986232.3545	2114206.4291	7381542.3473
	Row Percent	100.0000	17.6386	61.5835
	SE Row Percent	0.0000	1.5392	2.0672
	DEFF Row Percent			
	#4	.	1.9602	2.1711
20-24	Sample Size	1819.0000	794.0000	645.0000
	Weighted Size	20073674.5350	9529472.9393	6766103.9031
	Row Percent	100.0000	47.4725	33.7064
	SE Row Percent	0.0000	2.0120	1.7419
	DEFF Row Percent			
	#4	.	2.9531	2.4699
25-44	Sample Size	3188.0000	1970.0000	457.0000
	Weighted Size	35544516.7815	22152370.2528	4905672.8657
	Row Percent	100.0000	62.3229	13.8015
	SE Row Percent	0.0000	1.5343	0.8552
	DEFF Row Percent			
	#4	.	3.1959	1.9600

**SUDAAN 8.0.2 Output Cont.**

Variance Estimation Method: Taylor Series (WR)  
 by: RACE AND HISPANIC ORIGIN, AGEPEGX, WANTRESPX.  
 for: RACE AND HISPANIC ORIGIN = NON-HISPANIC WHITE.

AGEPEGX		WANTRESPX Unwanted	Other
Total	Sample Size	874.0000	541.0000
	Weighted Size	9075619.5201	5679435.4135
	Row Percent	13.4246	8.4010
	SE Row Percent	0.8540	0.6087
	DEFF Row Percent		
	#4	3.8963	2.9896
15-19	Sample Size	249.0000	25.0000
	Weighted Size	2228434.1916	262049.3865
	Row Percent	18.5916	2.1863
	SE Row Percent	1.8283	0.4496
	DEFF Row Percent		
	#4	2.6548	1.1361
20-24	Sample Size	284.0000	96.0000
	Weighted Size	2838981.3080	939116.3846
	Row Percent	14.1428	4.6783
	SE Row Percent	1.1574	0.6375
	DEFF Row Percent		
	#4	2.0067	1.6575
25-44	Sample Size	341.0000	420.0000
	Weighted Size	4008204.0205	4478269.6425
	Row Percent	11.2766	12.5990
	SE Row Percent	1.1358	1.0301
	DEFF Row Percent		
	#4	4.1108	3.0720

**SUDAAN 8.0.2 Output Cont.**

Variance Estimation Method: Taylor Series (WR)  
 by: RACE AND HISPANIC ORIGIN, AGEPEGX, WANTRESPX.  
 for: RACE AND HISPANIC ORIGIN = NON-HISPANIC BLACK.

AGEPEGX		WANTRESPX Total	Wanted	Mistimed
Total	Sample Size	3291.0000	1068.0000	1052.0000
	Weighted Size	17943975.7202	5864494.7701	5618971.7502
	Row Percent	100.0000	32.6822	31.3140
	SE Row Percent	0.0000	1.4278	1.4105
	DEFF Row Percent			
	#4	.	3.0496	3.0441
15-19	Sample Size	1032.0000	179.0000	482.0000
	Weighted Size	5582756.6568	986738.4067	2637953.7998
	Row Percent	100.0000	17.6748	47.2518
	SE Row Percent	0.0000	1.7145	2.8499
	DEFF Row Percent			
	#4	.	2.0849	3.3629
20-24	Sample Size	1131.0000	385.0000	362.0000
	Weighted Size	6288845.6977	2195054.7793	1936522.3301
	Row Percent	100.0000	34.9039	30.7930
	SE Row Percent	0.0000	2.3268	1.9330
	DEFF Row Percent			
	#4	.	2.6949	1.9830
25-44	Sample Size	1128.0000	504.0000	208.0000
	Weighted Size	6072373.3657	2682701.5840	1044495.6203
	Row Percent	100.0000	44.1788	17.2008
	SE Row Percent	0.0000	2.3609	1.8002
	DEFF Row Percent			
	#4	.	2.5495	2.5668

**SUDAAN 8.0.2 Output Cont.**

Variance Estimation Method: Taylor Series (WR)  
 by: RACE AND HISPANIC ORIGIN, AGEPEGX, WANTRESPX.  
 for: RACE AND HISPANIC ORIGIN = NON-HISPANIC BLACK.

AGEPEGX		WANTRESPX	
		Unwanted	Other
Total	Sample Size	992.0000	179.0000
	Weighted Size	5385051.5286	1075457.6713
	Row Percent	30.0104	5.9934
	SE Row Percent	1.3786	0.7605
	DEFF Row Percent		
	#4	2.9779	3.3779
15-19	Sample Size	329.0000	42.0000
	Weighted Size	1678180.1089	279884.3413
	Row Percent	30.0601	5.0134
	SE Row Percent	2.2433	1.2710
	DEFF Row Percent		
	#4	2.4702	3.5008
20-24	Sample Size	331.0000	53.0000
	Weighted Size	1860385.6995	296882.8887
	Row Percent	29.5823	4.7208
	SE Row Percent	1.8885	0.8841
	DEFF Row Percent		
	#4	1.9363	1.9656
25-44	Sample Size	332.0000	84.0000
	Weighted Size	1846485.7201	498690.4413
	Row Percent	30.4080	8.2124
	SE Row Percent	2.2634	1.0863
	DEFF Row Percent		
	#4	2.7308	1.7657

**SUDAAN 8.0.2 Output Cont.**

Variance Estimation Method: Taylor Series (WR)  
 by: RACE AND HISPANIC ORIGIN, AGEPEGX, WANTRESPX.  
 for: RACE AND HISPANIC ORIGIN = NON-HISPANIC OTHER.

AGEPEGX		WANTRESPX Total	Wanted	Mistimed
Total	Sample Size	539.0000	231.0000	164.0000
	Weighted Size	5183646.1111	2033308.6914	1854310.3329
	Row Percent	100.0000	39.2255	35.7723
	SE Row Percent	0.0000	3.8255	4.5154
	DEFF Row Percent			
	#4	.	3.3089	4.7830
15-19	Sample Size	104.0000	24.0000	58.0000
	Weighted Size	1191011.7722	243541.9362	728518.1537
	Row Percent	100.0000	20.4483	61.1680
	SE Row Percent	0.0000	7.0047	6.1461
	DEFF Row Percent			
	#4	.	3.1370	1.6539
20-24	Sample Size	187.0000	70.0000	67.0000
	Weighted Size	1905200.2923	760398.3358	769617.8096
	Row Percent	100.0000	39.9117	40.3956
	SE Row Percent	0.0000	5.8160	6.5613
	DEFF Row Percent			
	#4	.	2.6376	3.3435
25-44	Sample Size	248.0000	137.0000	39.0000
	Weighted Size	2087434.0466	1029368.4194	356174.3697
	Row Percent	100.0000	49.3126	17.0628
	SE Row Percent	0.0000	4.4462	3.3559
	DEFF Row Percent			
	#4	.	1.9614	1.9737

**SUDAAN 8.0.2 Output Cont.**

Variance Estimation Method: Taylor Series (WR)  
 by: RACE AND HISPANIC ORIGIN, AGEPEGX, WANTRESPX.  
 for: RACE AND HISPANIC ORIGIN = NON-HISPANIC OTHER.

AGEPEGX		WANTRESPX Unwanted	Other
Total	Sample Size	88.0000	56.0000
	Weighted Size	697019.6561	599007.4306
	Row Percent	13.4465	11.5557
	SE Row Percent	2.2047	1.6486
	DEFF Row Percent		
	#4	2.2511	1.4333
15-19	Sample Size	15.0000	7.0000
	Weighted Size	127350.2054	91601.4769
	Row Percent	10.6926	7.6911
	SE Row Percent	3.4314	5.3994
	DEFF Row Percent		
	#4	1.2824	4.2706
20-24	Sample Size	34.0000	16.0000
	Weighted Size	221754.1333	153430.0136
	Row Percent	11.6394	8.0532
	SE Row Percent	3.1180	2.3201
	DEFF Row Percent		
	#4	1.7677	1.3594
25-44	Sample Size	39.0000	33.0000
	Weighted Size	347915.3174	353975.9401
	Row Percent	16.6671	16.9575
	SE Row Percent	3.3878	3.1736
	DEFF Row Percent		
	#4	2.0494	1.7738

**STATA 8.0**

The *use* statement specifies the dataset to be used. The *svyset* command specifies the weight (FINALWGT), strata (SEST), and cluster (SECU\_P) variables to be used by STATA 8.0 in estimation. These settings are saved for the current session, but can be cleared by entering the *clear* command or running *svyset* again with different settings.

The *generate* and *replace* statements create the recodes ‘agepregx’ and ‘wantresp’ and the variables (‘hispanic’, ‘white’, ‘black’, and ‘other’) needed for subpopulation estimates. The *svytab* command produces a cross-tabulation of age at pregnancy outcome (‘agepregx’) and wantedness of pregnancy (‘wantresp’) for each of the race and Hispanic origin categories. The estimates provided are appropriate to the complex sample design identified by the *svyset* command. The requested estimates and output are limited to the row percentages, standard errors of the row percentages, and design effects of the row percentages by entering *row*, *se*, and *deff* at the end of the *svytab* statement.

### STATA 8.0 Program

```
use "EX5.dta"
svyset [pweight=FINALWGT], strata(SEST) psu(SECU_P)

generate agepreg_100 =int(AGEPREG/100)
generate agepregx=1 if agepreg_100 <=19
replace agepregx=. if agepreg==.
replace agepregx=2 if agepreg_100 >=20 & agepreg_100 <=24
replace agepregx=3 if agepreg_100 >=25

generate wantresp=0
replace wantresp=4 if WANTRESP==1
replace wantresp=1 if WANTRESP==2
replace wantresp=2 if WANTRESP==3
replace wantresp=4 if WANTRESP==4
replace wantresp=3 if WANTRESP==5
replace wantresp=4 if WANTRESP==6

generate hisp = (HISPRACE==1) if HISPRACE~=.
generate white = (HISPRACE==2) if HISPRACE~=.
generate black = (HISPRACE==3) if HISPRACE~=.
generate other = (HISPRACE==4) if HISPRACE~=.

svytab agepregx wantresp, subpop(hisp) row se deff percent
svytab agepregx wantresp, subpop(white) row se deff percent
svytab agepregx wantresp, subpop(black) row se deff percent
svytab agepregx wantresp, subpop(other) row se deff percent
```

Again the estimated percentages of pregnancies that were wanted, mistimed, or unwanted by age at pregnancy outcome and race and Hispanic origin are identical to those calculated by SAS 9.1 and SUDAAN 8.0.2.

### STATA 8.0 Output

```
. svytab agepregx wantresp, subpop(hisp) row se deff percent

pweight:  finalwgt                Number of obs   =   13241
Strata:    sest                   Number of strata =    84
PSU:       secu_p                 Number of PSUs  =   168
                                                Population size = 1.087e+08
Subpop.:   hisp=1                 Subpop. no. of obs =   3202
                                                Subpop. size   = 18010285
```

agepregx	wantresp				Total
	Wanted	Mistimed	Unwanted	Other	
15-19	28.96 (3.312) 34.01	41.66 (3.877) 33.61	22.93 (2.796) 30.09	6.448 (1.194) 18.64	100
20-24	47.26 (2.448) 9.562	24.9 (2.067) 11.83	19.7 (1.706) 9.991	8.144 (1.15) 10.52	100
25-44	57.53 (1.986) 4.992	15.17 (1.317) 6.87	17.31 (1.698) 10.11	9.988 (1.05) 6.501	100
Total	46.4 (1.81) 2.887	25.57 (1.53) 2.697	19.63 (1.505) 3.146	8.409 (.8339) 1.98	100

Key: row percentages  
(standard errors of row percentages)  
deff for variances of row percentages

Pearson:  
Uncorrected chi2(6) = 1004.9083  
Design-based F(4.62, 388.25) = 20.9104 P = 0.0000

Mean generalized deff = 8.6832  
CV of generalized deffs = 0.7014

**STATA 8.0 Output Cont.**

```
. svytab agepregx wantresp, subpop(white) row se deff percent
pweight: finalwgt      Number of obs   =   13241
Strata:  sest          Number of strata =     84
PSU:     secu_p        Number of PSUs  =    168
Subpop.: white==1     Population size = 1.087e+08
                       Subpop. no. of obs =   6209
                       Subpop. size   = 67604424
```

agepregx	wantresp				Total
	Wanted	Mistimed	Unwanted	Other	
15-19	17.64	61.58	18.59	2.186	100
	(1.539)	(2.067)	(1.828)	(.4496)	
	64.37	36.16	86.32	43.09	
20-24	47.47	33.71	14.14	4.678	100
	(2.012)	(1.742)	(1.157)	(.6375)	
	27.52	27.73	27.41	24.42	
25-44	62.32	13.8	11.28	12.6	100
	(1.534)	(.8552)	(1.136)	(1.03)	
	8.795	8.946	19.04	14.12	
Total	49.99	28.18	13.42	8.401	100
	(1.058)	(1.049)	(.854)	(.6087)	
	3.686	4.471	5.165	3.963	

Key: row percentages  
 (standard errors of row percentages)  
 deff for variances of row percentages

Pearson:  
 Uncorrected chi2(6) = 2581.9724  
 Design-based F(4.37, 367.32) = 105.9443 P = 0.0000  
 Mean generalized deff = 4.3972  
 CV of generalized deffs = 0.5875

```
. svytab agepregx wantresp, subpop(black) row se deff percent
pweight: finalwgt      Number of obs   =   13241
Strata:  sest          Number of strata =     84
PSU:     secu_p        Number of PSUs  =    168
Subpop.: black==1     Population size = 1.087e+08
                       Subpop. no. of obs =   3291
                       Subpop. size   = 17943976
```

agepregx	wantresp				Total
	Wanted	Mistimed	Unwanted	Other	
15-19	17.67	47.25	30.06	5.013	100
	(1.715)	(2.85)	(2.243)	(1.271)	
	12.36	14.15	12.97	22.99	
20-24	34.9	30.79	29.58	4.721	100
	(2.327)	(1.933)	(1.888)	(.8841)	
	11.02	8.479	8.385	10.5	
25-44	44.18	17.2	30.41	8.212	100
	(2.361)	(1.8)	(2.263)	(1.086)	
	9.577	12.92	12.12	9.541	
Total	32.68	31.31	30.01	5.993	100
	(1.428)	(1.41)	(1.379)	(.7605)	
	2.025	2.021	1.977	2.242	

Key: row percentages  
 (standard errors of row percentages)  
 deff for variances of row percentages

Pearson:  
 Uncorrected chi2(6) = 1148.1853  
 Design-based F(4.90, 411.77) = 22.6515 P = 0.0000  
 Mean generalized deff = 8.6495  
 CV of generalized deffs = 0.5009



### STATA 8.0 Output Cont.

```
. svytab agepregx wantresp, subpop(other) row se deff percent
pweight: finalwgt          Number of obs   =   13241
Strata:   sest             Number of strata =    84
PSU:     secu_p           Number of PSUs  =   168
                               Population size = 1.087e+08
Subpop.: other==1         Subpop. no. of obs =    539
                               Subpop. size   = 5183646.1
```

agepregx	wantresp				Total
	Wanted	Mistimed	Unwanted	Other	
15-19	20.45 (7.005) 69.16	61.17 (6.146) 19.74	10.69 (3.431) 31.01	7.691 (5.399) 106	100
20-24	39.91 (5.816) 17.06	40.4 (6.561) 21.49	11.64 (3.118) 14.98	8.053 (2.32) 11.83	100
25-44	49.31 (4.446) 7.84	17.06 (3.356) 11.11	16.67 (3.388) 11.57	16.96 (3.174) 9.991	100
Total	39.23 (3.826) 3.875	35.77 (4.515) 5.601	13.45 (2.205) 2.636	11.56 (1.649) 1.678	100

Key: row percentages  
(standard errors of row percentages)  
deff for variances of row percentages

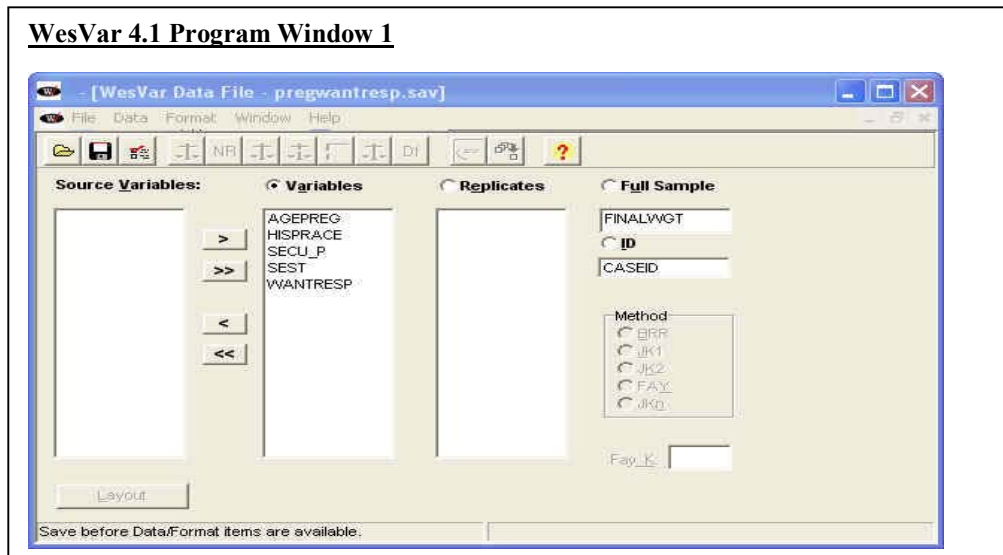
Pearson:  
Uncorrected chi2(6) = 1807.4343  
Design-based F(3.47, 291.28) = 5.1059 P = 0.0010

Mean generalized deff = 51.0482  
CV of generalized deffs = 0.6450

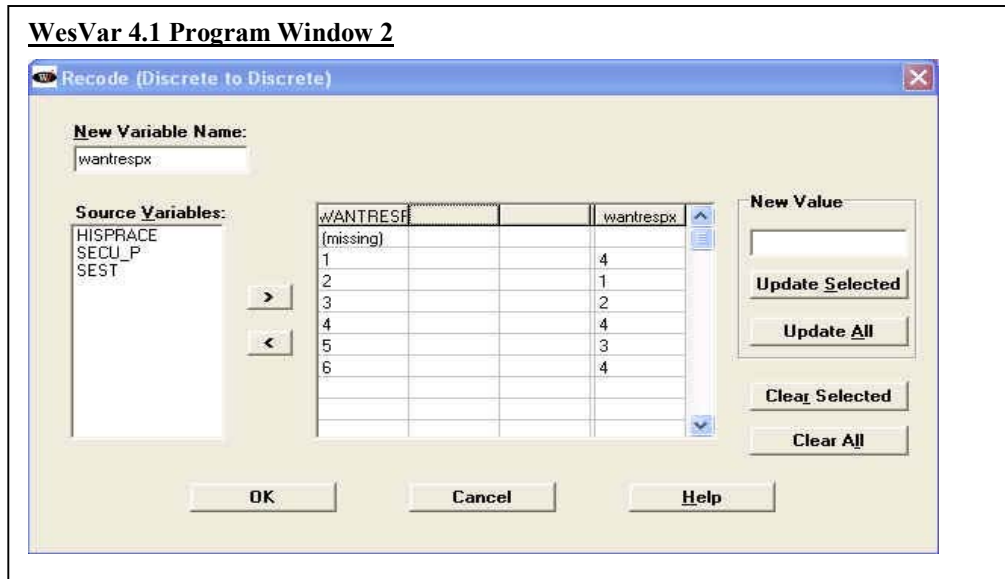
### WesVar 4.1

Not all WesVar windows are displayed for this example. Readers may refer to Example 1 for a full set of windows. An SPSS file was imported for use in analysis.

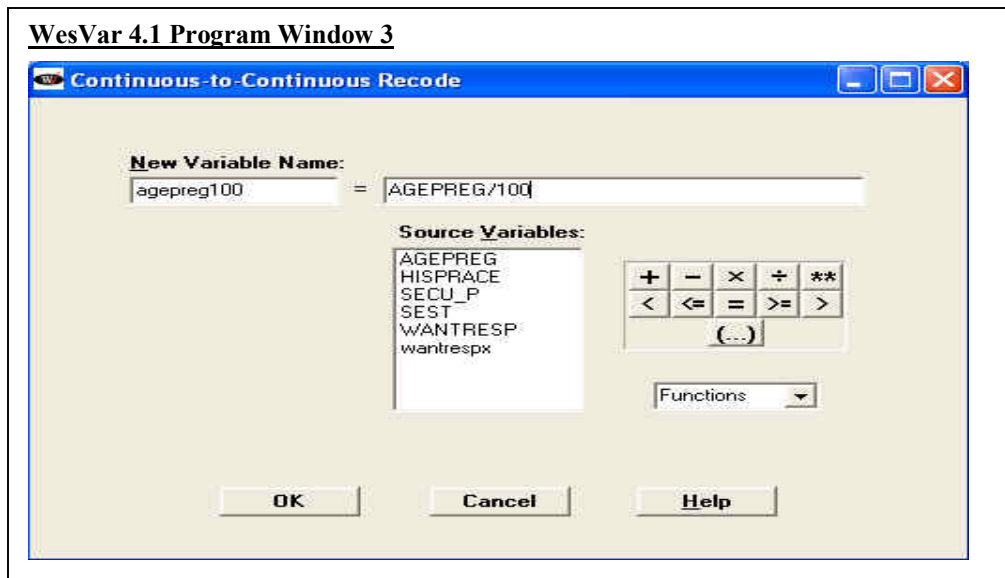
Window 1 displays the selection and categorization of variables to be used in the current analysis. After variables are selected, a new dataset is created.

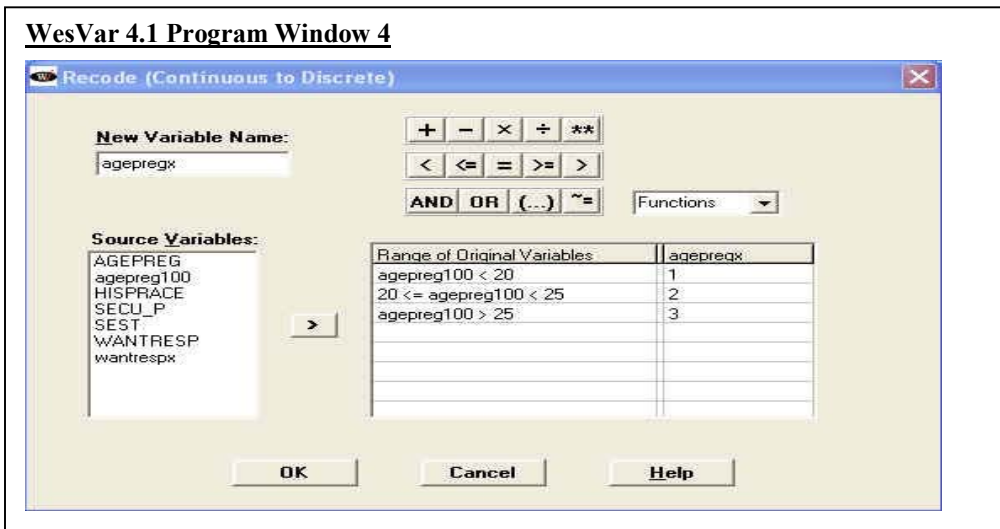


Windows 2 displays the procedure for recoding WANTRESP into 'wantresp'. Select the *New Discrete to Discrete* button to recode WANTRESP.

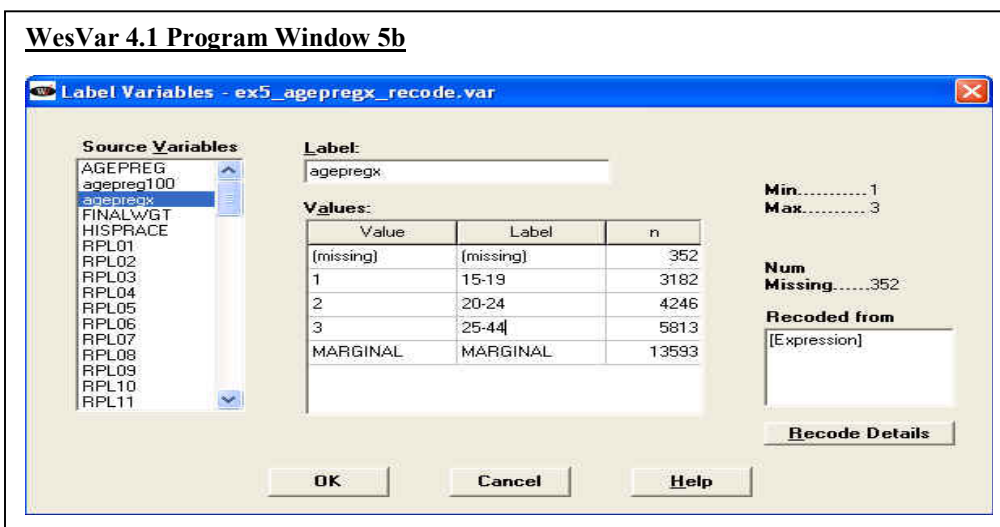
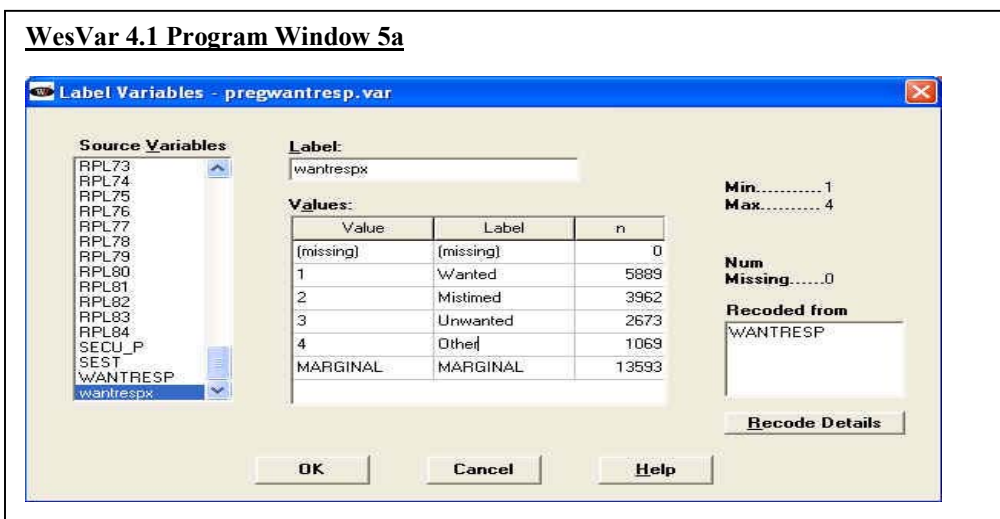


AGEPREG is recoded into the three category variable 'agepreg' in Windows 3 and 4.

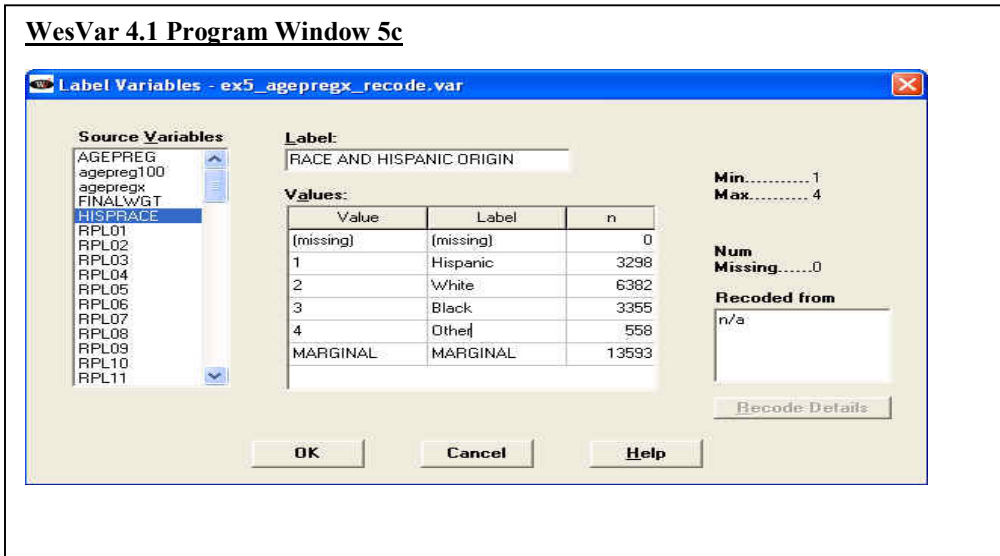




Windows 5a through 5c display how to apply value labels to ‘wantrespx’, ‘agepregx’, and HISPRACE. Under the *Format* menu, select *Label*.

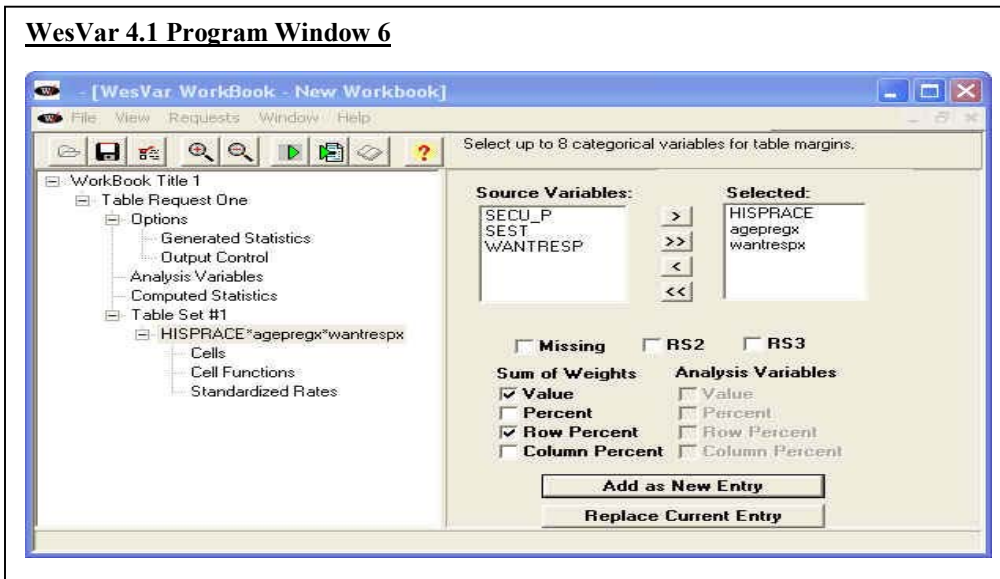


### WesVar 4.1 Program Window 5c



In Window 6 the variables for analysis are selected for a table estimating the percentage of pregnancies that were wanted, mistimed, or unwanted, by race and Hispanic origin, and age at pregnancy outcome. Under the *Sum of Weights* options, *Value* and *Row Percent* are selected for output.

### WesVar 4.1 Program Window 6



The output provided by WesVar is a list-wise statement of all estimates requested.

### **WesVar 4.1 Output**

```
WESVAR VERSION NUMBER :      v4.1
TIME THE JOB EXECUTED  :      13:33:22 10/14/2004
INPUT DATASET NAME    :      ex5.var
TIME THE INPUT DATASET CREATED :    16:13:09 10/13/2004
FULL SAMPLE WEIGHT     :      FINALWGT
REPLICATE WEIGHTS      :      RPL01...RPL84
VARIANCE ESTIMATION METHOD : BRR

OPTION COMPLETE : ON
OPTION FUNCTION LOG :      ON
OPTION VARIABLE LABEL :      OFF
OPTION VALUE LABEL :      ON
OPTION OUTPUT REPLICATE ESTIMATES :      OFF
FINITE POPULATION CORRECTION FACTOR : 1.00000
VALUE OF ALPHA (CONFIDENCE LEVEL %) : 0.05000 (95.00000 %)
DEGREES OF FREEDOM :      84
t VALUE :      1.989

ANALYSIS VARIABLES :      HISPRACE, agepregx, wantrespx
COMPUTED STATISTIC :      None Specified.
TABLE(S) :      HISPRACE*agepregx*wantrespx

FACTOR(S) :      1.00

NUMBER OF REPLICATES :      84
NUMBER OF OBSERVATIONS READ :      13593
WEIGHTED NUMBER OF OBSERVATIONS READ : 111413968.048
```

**WesVar 4.1 Output Cont.**

HISPRACE	agepregx	wantresp	STATISTIC	EST_TYPE	ESTIMATE	STDERROR	CV(%)	CELL_n	DENOM_n	DEFF
Hispanic	15-19	Wanted	SUM_WTS	VALUE	1379985.45	195039.306	14.133	238	N/A	N/A
Hispanic	15-19	Mistimed	SUM_WTS	VALUE	1985184.37	227459.747	11.458	349	N/A	N/A
Hispanic	15-19	Unwanted	SUM_WTS	VALUE	1092502.97	159820.177	14.629	200	N/A	N/A
Hispanic	15-19	Other	SUM_WTS	VALUE	307230.18	66788.015	21.739	57	N/A	N/A
Hispanic	15-19	MARGINAL	SUM_WTS	VALUE	4764902.98	374925.95	7.868	844	N/A	N/A
Hispanic	20-24	Wanted	SUM_WTS	VALUE	2962551.1	247084.882	8.34	508	N/A	N/A
Hispanic	20-24	Mistimed	SUM_WTS	VALUE	1560885.14	137404.202	8.803	276	N/A	N/A
Hispanic	20-24	Unwanted	SUM_WTS	VALUE	1235293.03	130871.11	10.594	252	N/A	N/A
Hispanic	20-24	Other	SUM_WTS	VALUE	510538.44	77420.91	15.165	73	N/A	N/A
Hispanic	20-24	MARGINAL	SUM_WTS	VALUE	6269267.71	355576.328	5.672	1109	N/A	N/A
Hispanic	25-44	Wanted	SUM_WTS	VALUE	4013501.39	303032.357	7.55	692	N/A	N/A
Hispanic	25-44	Mistimed	SUM_WTS	VALUE	1058622.68	126476.131	11.947	202	N/A	N/A
Hispanic	25-44	Unwanted	SUM_WTS	VALUE	1207220.99	133446.69	11.054	231	N/A	N/A
Hispanic	25-44	Other	SUM_WTS	VALUE	696769.62	79035.813	11.343	124	N/A	N/A
Hispanic	25-44	MARGINAL	SUM_WTS	VALUE	6976114.68	454677.602	6.518	1249	N/A	N/A
Hispanic	MARGINAL	Wanted	SUM_WTS	VALUE	8356037.93	628921.624	7.527	1438	N/A	N/A
Hispanic	MARGINAL	Mistimed	SUM_WTS	VALUE	4604692.2	357760.086	7.769	827	N/A	N/A
Hispanic	MARGINAL	Unwanted	SUM_WTS	VALUE	3535016.99	328780.871	9.301	683	N/A	N/A
Hispanic	MARGINAL	Other	SUM_WTS	VALUE	1514538.24	172882.574	11.415	254	N/A	N/A
Hispanic	MARGINAL	MARGINAL	SUM_WTS	VALUE	18010285.36	1044590.278	5.8	3202	N/A	N/A
White	15-19	Wanted	SUM_WTS	VALUE	2114206.43	238951.295	11.302	198	N/A	N/A
White	15-19	Mistimed	SUM_WTS	VALUE	7381542.35	604436.802	8.188	730	N/A	N/A
White	15-19	Unwanted	SUM_WTS	VALUE	2228434.19	229442.282	10.296	249	N/A	N/A
White	15-19	Other	SUM_WTS	VALUE	262049.39	54650.67	20.855	25	N/A	N/A
White	15-19	MARGINAL	SUM_WTS	VALUE	11986232.35	808043.448	6.741	1202	N/A	N/A
White	20-24	Wanted	SUM_WTS	VALUE	9529472.94	671737.438	7.049	794	N/A	N/A
White	20-24	Mistimed	SUM_WTS	VALUE	6766103.9	496334.584	7.336	645	N/A	N/A
White	20-24	Unwanted	SUM_WTS	VALUE	2838981.31	261108.901	9.197	284	N/A	N/A
White	20-24	Other	SUM_WTS	VALUE	939116.38	128942.723	13.73	96	N/A	N/A
White	20-24	MARGINAL	SUM_WTS	VALUE	20073674.53	1039630.048	5.179	1819	N/A	N/A
White	25-44	Wanted	SUM_WTS	VALUE	22152370.25	1342669.083	6.061	1970	N/A	N/A
White	25-44	Mistimed	SUM_WTS	VALUE	4905672.87	423118.421	8.625	457	N/A	N/A
White	25-44	Unwanted	SUM_WTS	VALUE	4008204.02	470464.132	11.738	341	N/A	N/A
White	25-44	Other	SUM_WTS	VALUE	4478269.64	425141.893	9.493	420	N/A	N/A
White	25-44	MARGINAL	SUM_WTS	VALUE	35544516.78	1982662.953	5.578	3188	N/A	N/A
White	MARGINAL	Wanted	SUM_WTS	VALUE	33796049.62	1712443.392	5.067	2962	N/A	N/A
White	MARGINAL	Mistimed	SUM_WTS	VALUE	19053319.12	1307605.52	6.863	1832	N/A	N/A
White	MARGINAL	Unwanted	SUM_WTS	VALUE	9075619.52	689171.089	7.594	874	N/A	N/A
White	MARGINAL	Other	SUM_WTS	VALUE	5679435.41	483456.894	8.512	541	N/A	N/A
White	MARGINAL	MARGINAL	SUM_WTS	VALUE	67604423.67	3308718.612	4.894	6209	N/A	N/A
Black	15-19	Wanted	SUM_WTS	VALUE	986738.41	114909.07	11.645	179	N/A	N/A
Black	15-19	Mistimed	SUM_WTS	VALUE	2637953.8	271820.426	10.304	482	N/A	N/A
Black	15-19	Unwanted	SUM_WTS	VALUE	1678180.11	172420.75	10.274	329	N/A	N/A
Black	15-19	Other	SUM_WTS	VALUE	279884.34	76527.802	27.343	42	N/A	N/A
Black	15-19	MARGINAL	SUM_WTS	VALUE	5582756.66	434484.216	7.783	1032	N/A	N/A
Black	20-24	Wanted	SUM_WTS	VALUE	2195054.78	210273.47	9.579	385	N/A	N/A
Black	20-24	Mistimed	SUM_WTS	VALUE	1936522.33	157960.09	8.157	362	N/A	N/A
Black	20-24	Unwanted	SUM_WTS	VALUE	1860385.7	199317.46	10.714	331	N/A	N/A
Black	20-24	Other	SUM_WTS	VALUE	296882.89	62095.72	20.916	53	N/A	N/A
Black	20-24	MARGINAL	SUM_WTS	VALUE	6288845.7	448524.712	7.132	1131	N/A	N/A
Black	25-44	Wanted	SUM_WTS	VALUE	2682701.58	227367.732	8.475	504	N/A	N/A
Black	25-44	Mistimed	SUM_WTS	VALUE	1044495.62	131577.871	12.597	208	N/A	N/A
Black	25-44	Unwanted	SUM_WTS	VALUE	1846485.72	230188.449	12.466	332	N/A	N/A
Black	25-44	Other	SUM_WTS	VALUE	498690.44	84737.585	16.992	84	N/A	N/A
Black	25-44	MARGINAL	SUM_WTS	VALUE	6072373.37	498249.715	8.205	1128	N/A	N/A
Black	MARGINAL	Wanted	SUM_WTS	VALUE	5864494.77	438856.421	7.483	1068	N/A	N/A
Black	MARGINAL	Mistimed	SUM_WTS	VALUE	5618971.75	405960.219	7.225	1052	N/A	N/A
Black	MARGINAL	Unwanted	SUM_WTS	VALUE	5385051.53	473240.9	8.788	992	N/A	N/A
Black	MARGINAL	Other	SUM_WTS	VALUE	1075457.67	165081.389	15.35	179	N/A	N/A
Black	MARGINAL	MARGINAL	SUM_WTS	VALUE	17943975.72	1181748.69	6.586	3291	N/A	N/A

**WesVar 4.1 Output Cont.**

Other	15-19	Wanted	SUM_WTS	VALUE	243541.94	77397.545	31.78	24	N/A	N/A
Other	15-19	Mistimed	SUM_WTS	VALUE	728518.15	199597.348	27.398	58	N/A	N/A
Other	15-19	Unwanted	SUM_WTS	VALUE	127350.21	28875.538	22.674	15	N/A	N/A
Other	15-19	Other	SUM_WTS	VALUE	91601.48	78783.52	86.007	7	N/A	N/A
Other	15-19	MARGINAL	SUM_WTS	VALUE	1191011.77	265967.27	22.331	104	N/A	N/A
Other	20-24	Wanted	SUM_WTS	VALUE	760398.34	173365.217	22.799	70	N/A	N/A
Other	20-24	Mistimed	SUM_WTS	VALUE	769617.81	237894.992	30.911	67	N/A	N/A
Other	20-24	Unwanted	SUM_WTS	VALUE	221754.13	44998.676	20.292	34	N/A	N/A
Other	20-24	Other	SUM_WTS	VALUE	153430.01	49023.949	31.952	16	N/A	N/A
Other	20-24	MARGINAL	SUM_WTS	VALUE	1905200.29	372313.91	19.542	187	N/A	N/A
Other	25-44	Wanted	SUM_WTS	VALUE	1029368.42	159976.545	15.541	137	N/A	N/A
Other	25-44	Mistimed	SUM_WTS	VALUE	356174.37	80108.766	22.491	39	N/A	N/A
Other	25-44	Unwanted	SUM_WTS	VALUE	347915.32	84291.329	24.228	39	N/A	N/A
Other	25-44	Other	SUM_WTS	VALUE	353975.94	82539.749	23.318	33	N/A	N/A
Other	25-44	MARGINAL	SUM_WTS	VALUE	2087434.05	264950.838	12.693	248	N/A	N/A
Other	MARGINAL	Wanted	SUM_WTS	VALUE	2033308.69	269885.663	13.273	231	N/A	N/A
Other	MARGINAL	Mistimed	SUM_WTS	VALUE	1854310.33	441988.646	23.836	164	N/A	N/A
Other	MARGINAL	Unwanted	SUM_WTS	VALUE	697019.66	98525.43	14.135	88	N/A	N/A
Other	MARGINAL	Other	SUM_WTS	VALUE	599007.43	137775.079	23.001	56	N/A	N/A
Other	MARGINAL	MARGINAL	SUM_WTS	VALUE	5183646.11	744668.494	14.366	539	N/A	N/A
MARGINAL	15-19	Wanted	SUM_WTS	VALUE	4724472.23	365769.615	7.742	639	N/A	N/A
MARGINAL	15-19	Mistimed	SUM_WTS	VALUE	12733198.68	754708.069	5.927	1619	N/A	N/A
MARGINAL	15-19	Unwanted	SUM_WTS	VALUE	5126467.47	343363.738	6.698	793	N/A	N/A
MARGINAL	15-19	Other	SUM_WTS	VALUE	940765.39	146597.965	15.583	131	N/A	N/A
MARGINAL	15-19	MARGINAL	SUM_WTS	VALUE	23524903.76	1139041.685	4.842	3182	N/A	N/A
MARGINAL	20-24	Wanted	SUM_WTS	VALUE	15447477.15	737050.405	4.771	1757	N/A	N/A
MARGINAL	20-24	Mistimed	SUM_WTS	VALUE	11033129.19	590843.43	5.355	1350	N/A	N/A
MARGINAL	20-24	Unwanted	SUM_WTS	VALUE	6156414.17	327606.326	5.321	901	N/A	N/A
MARGINAL	20-24	Other	SUM_WTS	VALUE	1899967.73	177633.752	9.349	238	N/A	N/A
MARGINAL	20-24	MARGINAL	SUM_WTS	VALUE	34536988.23	1208649.224	3.5	4246	N/A	N/A
MARGINAL	25-44	Wanted	SUM_WTS	VALUE	29877941.64	1432044.361	4.793	3303	N/A	N/A
MARGINAL	25-44	Mistimed	SUM_WTS	VALUE	7364965.53	481190.728	6.534	906	N/A	N/A
MARGINAL	25-44	Unwanted	SUM_WTS	VALUE	7409826.05	543196.702	7.331	943	N/A	N/A
MARGINAL	25-44	Other	SUM_WTS	VALUE	6027705.64	468739.268	7.776	661	N/A	N/A
MARGINAL	25-44	MARGINAL	SUM_WTS	VALUE	50680438.87	2171963.844	4.286	5813	N/A	N/A
MARGINAL	MARGINAL	Wanted	SUM_WTS	VALUE	50049891.02	1936760.463	3.87	5699	N/A	N/A
MARGINAL	MARGINAL	Mistimed	SUM_WTS	VALUE	31131293.4	1523041.286	4.892	3875	N/A	N/A
MARGINAL	MARGINAL	Unwanted	SUM_WTS	VALUE	18692707.69	839144.829	4.489	2637	N/A	N/A
MARGINAL	MARGINAL	Other	SUM_WTS	VALUE	8868438.76	613820.816	6.921	1030	N/A	N/A
MARGINAL	MARGINAL	MARGINAL	SUM_WTS	VALUE	108742330.9	3808744.507	3.503	13241	N/A	N/A
Hispanic	15-19	Wanted	SUM_WTS	ROWPCT	28.96	3.434	11.857	238	844	4.837
Hispanic	15-19	Mistimed	SUM_WTS	ROWPCT	41.66	4.046	9.712	349	844	5.686
Hispanic	15-19	Unwanted	SUM_WTS	ROWPCT	22.93	2.886	12.589	200	844	3.979
Hispanic	15-19	Other	SUM_WTS	ROWPCT	6.45	1.229	19.061	57	844	2.114
Hispanic	15-19	MARGINAL	SUM_WTS	ROWPCT	100	.	.	844	844	.
Hispanic	20-24	Wanted	SUM_WTS	ROWPCT	47.26	2.491	5.271	508	1109	2.761
Hispanic	20-24	Mistimed	SUM_WTS	ROWPCT	24.9	2.114	8.49	276	1109	2.65
Hispanic	20-24	Unwanted	SUM_WTS	ROWPCT	19.7	1.748	8.87	252	1109	2.141
Hispanic	20-24	Other	SUM_WTS	ROWPCT	8.14	1.164	14.3	73	1109	2.01
Hispanic	20-24	MARGINAL	SUM_WTS	ROWPCT	100	.	.	1109	1109	.
Hispanic	25-44	Wanted	SUM_WTS	ROWPCT	57.53	2.037	3.54	692	1249	2.12
Hispanic	25-44	Mistimed	SUM_WTS	ROWPCT	15.17	1.332	8.778	202	1249	1.722
Hispanic	25-44	Unwanted	SUM_WTS	ROWPCT	17.31	1.723	9.957	231	1249	2.591
Hispanic	25-44	Other	SUM_WTS	ROWPCT	9.99	1.079	10.802	124	1249	1.617
Hispanic	25-44	MARGINAL	SUM_WTS	ROWPCT	100	.	.	1249	1249	.
Hispanic	MARGINAL	Wanted	SUM_WTS	ROWPCT	46.4	1.855	3.999	1438	3202	4.432
Hispanic	MARGINAL	Mistimed	SUM_WTS	ROWPCT	25.57	1.571	6.145	827	3202	4.153
Hispanic	MARGINAL	Unwanted	SUM_WTS	ROWPCT	19.63	1.515	7.721	683	3202	4.662
Hispanic	MARGINAL	Other	SUM_WTS	ROWPCT	8.41	0.855	10.17	254	3202	3.041
Hispanic	MARGINAL	MARGINAL	SUM_WTS	ROWPCT	100	.	.	3202	3202	.
White	15-19	Wanted	SUM_WTS	ROWPCT	17.64	1.588	9.004	198	1202	2.087
White	15-19	Mistimed	SUM_WTS	ROWPCT	61.58	2.117	3.437	730	1202	2.277
White	15-19	Unwanted	SUM_WTS	ROWPCT	18.59	1.837	9.883	249	1202	2.681
White	15-19	Other	SUM_WTS	ROWPCT	2.19	0.461	21.096	25	1202	1.196
White	15-19	MARGINAL	SUM_WTS	ROWPCT	100	.	.	1202	1202	.
White	20-24	Wanted	SUM_WTS	ROWPCT	47.47	2.001	4.215	794	1819	2.921
White	20-24	Mistimed	SUM_WTS	ROWPCT	33.71	1.73	5.132	645	1819	2.436
White	20-24	Unwanted	SUM_WTS	ROWPCT	14.14	1.175	8.306	284	1819	2.067
White	20-24	Other	SUM_WTS	ROWPCT	4.68	0.632	13.52	96	1819	1.632
White	20-24	MARGINAL	SUM_WTS	ROWPCT	100	.	.	1819	1819	.
White	25-44	Wanted	SUM_WTS	ROWPCT	62.32	1.549	2.485	1970	3188	3.257
White	25-44	Mistimed	SUM_WTS	ROWPCT	13.8	0.869	6.299	457	3188	2.025
White	25-44	Unwanted	SUM_WTS	ROWPCT	11.28	1.148	10.184	341	3188	4.202
White	25-44	Other	SUM_WTS	ROWPCT	12.6	1.041	8.259	420	3188	3.135
White	25-44	MARGINAL	SUM_WTS	ROWPCT	100	.	.	3188	3188	.
White	MARGINAL	Wanted	SUM_WTS	ROWPCT	49.99	1.072	2.145	2962	6209	2.856
White	MARGINAL	Mistimed	SUM_WTS	ROWPCT	28.18	1.055	3.745	1832	6209	3.417
White	MARGINAL	Unwanted	SUM_WTS	ROWPCT	13.42	0.862	6.42	874	6209	3.968
White	MARGINAL	Other	SUM_WTS	ROWPCT	8.4	0.609	7.248	541	6209	2.992
White	MARGINAL	MARGINAL	SUM_WTS	ROWPCT	100	.	.	6209	6209	.

**WesVar 4.1 Output Cont.**

Black	15-19	Wanted	SUM_WTS	ROWPCT	17.67	1.722	9.741	179	1032	2.102
Black	15-19	Mistimed	SUM_WTS	ROWPCT	47.25	2.787	5.899	482	1032	3.217
Black	15-19	Unwanted	SUM_WTS	ROWPCT	30.06	2.266	7.539	329	1032	2.521
Black	15-19	Other	SUM_WTS	ROWPCT	5.01	1.25	24.93	42	1032	3.385
Black	15-19	MARGINAL	SUM_WTS	ROWPCT	100	.	.	1032	1032	.
Black	20-24	Wanted	SUM_WTS	ROWPCT	34.9	2.328	6.67	385	1131	2.698
Black	20-24	Mistimed	SUM_WTS	ROWPCT	30.79	1.954	6.346	362	1131	2.027
Black	20-24	Unwanted	SUM_WTS	ROWPCT	29.58	1.868	6.314	331	1131	1.894
Black	20-24	Other	SUM_WTS	ROWPCT	4.72	0.867	18.375	53	1131	1.892
Black	20-24	MARGINAL	SUM_WTS	ROWPCT	100	.	.	1131	1131	.
Black	25-44	Wanted	SUM_WTS	ROWPCT	44.18	2.345	5.308	504	1128	2.515
Black	25-44	Mistimed	SUM_WTS	ROWPCT	17.2	1.786	10.386	208	1128	2.528
Black	25-44	Unwanted	SUM_WTS	ROWPCT	30.41	2.261	7.437	332	1128	2.726
Black	25-44	Other	SUM_WTS	ROWPCT	8.21	1.071	13.036	84	1128	1.715
Black	25-44	MARGINAL	SUM_WTS	ROWPCT	100	.	.	1128	1128	.
Black	MARGINAL	Wanted	SUM_WTS	ROWPCT	32.68	1.415	4.329	1068	3291	2.995
Black	MARGINAL	Mistimed	SUM_WTS	ROWPCT	31.31	1.391	4.443	1052	3291	2.962
Black	MARGINAL	Unwanted	SUM_WTS	ROWPCT	30.01	1.364	4.545	992	3291	2.915
Black	MARGINAL	Other	SUM_WTS	ROWPCT	5.99	0.748	12.479	179	3291	3.267
Black	MARGINAL	MARGINAL	SUM_WTS	ROWPCT	100	.	.	3291	3291	.
Other	15-19	Wanted	SUM_WTS	ROWPCT	20.45	7.736	37.833	24	104	3.826
Other	15-19	Mistimed	SUM_WTS	ROWPCT	61.17	6.799	11.115	58	104	2.024
Other	15-19	Unwanted	SUM_WTS	ROWPCT	10.69	4.021	37.606	15	104	1.761
Other	15-19	Other	SUM_WTS	ROWPCT	7.69	5.706	74.195	7	104	4.77
Other	15-19	MARGINAL	SUM_WTS	ROWPCT	100	.	.	104	104	.
Other	20-24	Wanted	SUM_WTS	ROWPCT	39.91	5.852	14.663	70	187	2.671
Other	20-24	Mistimed	SUM_WTS	ROWPCT	40.4	6.833	16.916	67	187	3.626
Other	20-24	Unwanted	SUM_WTS	ROWPCT	11.64	3.281	28.188	34	187	1.957
Other	20-24	Other	SUM_WTS	ROWPCT	8.05	2.504	31.094	16	187	1.584
Other	20-24	MARGINAL	SUM_WTS	ROWPCT	100	.	.	187	187	.
Other	25-44	Wanted	SUM_WTS	ROWPCT	49.31	4.59	9.307	137	248	2.09
Other	25-44	Mistimed	SUM_WTS	ROWPCT	17.06	3.387	19.851	39	248	2.011
Other	25-44	Unwanted	SUM_WTS	ROWPCT	16.67	3.505	21.029	39	248	2.193
Other	25-44	Other	SUM_WTS	ROWPCT	16.96	3.218	18.977	33	248	1.824
Other	25-44	MARGINAL	SUM_WTS	ROWPCT	100	.	.	248	248	.
Other	MARGINAL	Wanted	SUM_WTS	ROWPCT	39.23	3.893	9.924	231	539	3.426
Other	MARGINAL	Mistimed	SUM_WTS	ROWPCT	35.77	4.66	13.026	164	539	5.094
Other	MARGINAL	Unwanted	SUM_WTS	ROWPCT	13.45	2.294	17.064	88	539	2.438
Other	MARGINAL	Other	SUM_WTS	ROWPCT	11.56	1.722	14.902	56	539	1.564
Other	MARGINAL	MARGINAL	SUM_WTS	ROWPCT	100	.	.	539	539	.
MARGINAL	15-19	Wanted	SUM_WTS	ROWPCT	20.08	1.202	5.985	639	3182	2.864
MARGINAL	15-19	Mistimed	SUM_WTS	ROWPCT	54.13	1.659	3.066	1619	3182	3.529
MARGINAL	15-19	Unwanted	SUM_WTS	ROWPCT	21.79	1.298	5.955	793	3182	3.144
MARGINAL	15-19	Other	SUM_WTS	ROWPCT	4	0.561	14.032	131	3182	2.61
MARGINAL	15-19	MARGINAL	SUM_WTS	ROWPCT	100	.	.	3182	3182	.
MARGINAL	20-24	Wanted	SUM_WTS	ROWPCT	44.73	1.339	2.994	1757	4246	3.079
MARGINAL	20-24	Mistimed	SUM_WTS	ROWPCT	31.95	1.25	3.914	1350	4246	3.053
MARGINAL	20-24	Unwanted	SUM_WTS	ROWPCT	17.83	0.863	4.844	901	4246	2.161
MARGINAL	20-24	Other	SUM_WTS	ROWPCT	5.5	0.459	8.348	238	4246	1.722
MARGINAL	20-24	MARGINAL	SUM_WTS	ROWPCT	100	.	.	4246	4246	.
MARGINAL	25-44	Wanted	SUM_WTS	ROWPCT	58.95	1.19	2.018	3303	5813	3.401
MARGINAL	25-44	Mistimed	SUM_WTS	ROWPCT	14.53	0.696	4.792	906	5813	2.269
MARGINAL	25-44	Unwanted	SUM_WTS	ROWPCT	14.62	0.929	6.355	943	5813	4.021
MARGINAL	25-44	Other	SUM_WTS	ROWPCT	11.89	0.78	6.555	661	5813	3.371
MARGINAL	25-44	MARGINAL	SUM_WTS	ROWPCT	100	.	.	5813	5813	.
MARGINAL	MARGINAL	Wanted	SUM_WTS	ROWPCT	46.03	0.858	1.865	5699	13241	3.927
MARGINAL	MARGINAL	Mistimed	SUM_WTS	ROWPCT	28.63	0.83	2.898	3875	13241	4.461
MARGINAL	MARGINAL	Unwanted	SUM_WTS	ROWPCT	17.19	0.662	3.851	2637	13241	4.076
MARGINAL	MARGINAL	Other	SUM_WTS	ROWPCT	8.16	0.44	5.4	1030	13241	3.428
MARGINAL	MARGINAL	MARGINAL	SUM_WTS	ROWPCT	100	.	.	13241	13241	.