

Legionnaires' Disease

Use water management programs in buildings to help prevent outbreaks

CDC investigated the first outbreak of Legionnaires' disease, a serious lung infection (pneumonia), in 1976. An increasing number of people in the US are getting this disease, which is caused by breathing in small water droplets contaminated with *Legionella* germs. About 5,000 people are diagnosed with Legionnaires' disease and there are at least 20 outbreaks reported each year. Most identified outbreaks are in buildings with large water systems, such as hotels, long-term care facilities, and hospitals. *Legionella* grows best in building water systems that are not well maintained. Building owners and managers should adopt newly published standards that promote *Legionella* water management programs, which are ways to reduce the risk of this germ in building water systems.

Building owners and managers can:

- Learn about and follow newly published standards for *Legionella* water management programs.
<http://bit.ly/1Ph3wQP>
- Determine if the water systems in their buildings are at increased risk of growing and spreading *Legionella*.
- Develop and use a *Legionella* water management program as needed. www.cdc.gov/legionella/WMPtoolkit
- Monitor and respond to changes in water quality.

Want to learn more? www.cdc.gov/vitalsigns/legionnaires

National Center for Immunization and Respiratory Diseases

National Center for Environmental Health

4x

The number of people with Legionnaires' disease grew by nearly 4 times from 2000–2014.

1 in 10

Legionnaires' disease is deadly for about 10% of people who get it.

9 in 10

CDC investigations show almost all outbreaks were caused by problems preventable with more effective water management.



U.S. Department of Health and Human Services
Centers for Disease Control and Prevention



Problem:

Water management problems can lead to Legionnaires' disease outbreaks.



What causes the Legionnaires' disease outbreaks that CDC investigates?

- About 1 in 2 (48%) are due to **more than one** of the following problems.
- About 2 in 3 (65%) are due to **process failures**, like not having a *Legionella* water management program.
- About 1 in 2 (52%) are due to **human error**, such as a hot tub filter not being cleaned or replaced as recommended by the manufacturer.
- About 1 in 3 (35%) are due to **equipment**, such as a disinfection system, not working.
- About 1 in 3 (35%) are due to **changes in water quality** from reasons external to the building itself, like nearby construction.

Where do people get Legionnaires' disease?

- CDC investigations of building-associated outbreaks show the most common places for getting the disease are **hotels**, **long-term care facilities**, and **hospitals**. Cruise ships are another place where Legionnaires' disease outbreaks can happen.
- In these types of buildings, the most likely sources for spreading water droplets contaminated with *Legionella* include:
 - ▶ Showers and faucets.
 - ▶ Cooling towers, which are parts of large centralized air conditioning systems.
 - ▶ Hot tubs.
 - ▶ Decorative fountains and water features.

Who's most at risk for getting Legionnaires' disease?

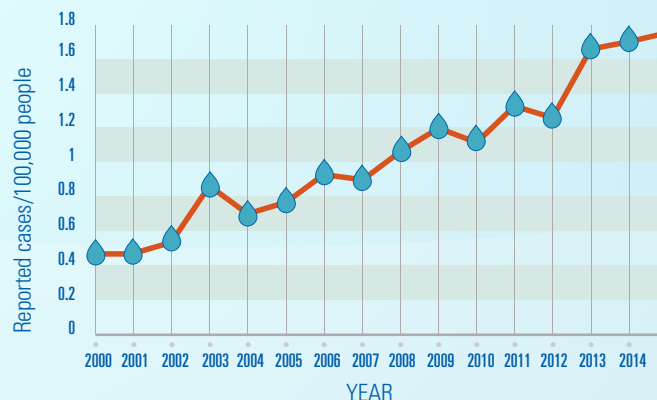
- Adults 50 years or older.
- Current or former smokers and people with a chronic lung disease, such as emphysema.
- People with a weakened immune system caused by diseases or medicines.

A *Legionella* water management program consists of:

- 1 Establishing a water management program team.
- 2 Describing the building water systems using words and diagrams.
- 3 Identifying areas where *Legionella* could grow and spread.
- 4 Deciding where control measures should be applied and how to monitor them.
- 5 Establishing ways to intervene when control limits are not met.
- 6 Making sure the program is running as designed and is effective.
- 7 Documenting and communicating all the activities.

www.cdc.gov/legionella/WMPtoolkit

Legionnaires' disease is on the rise

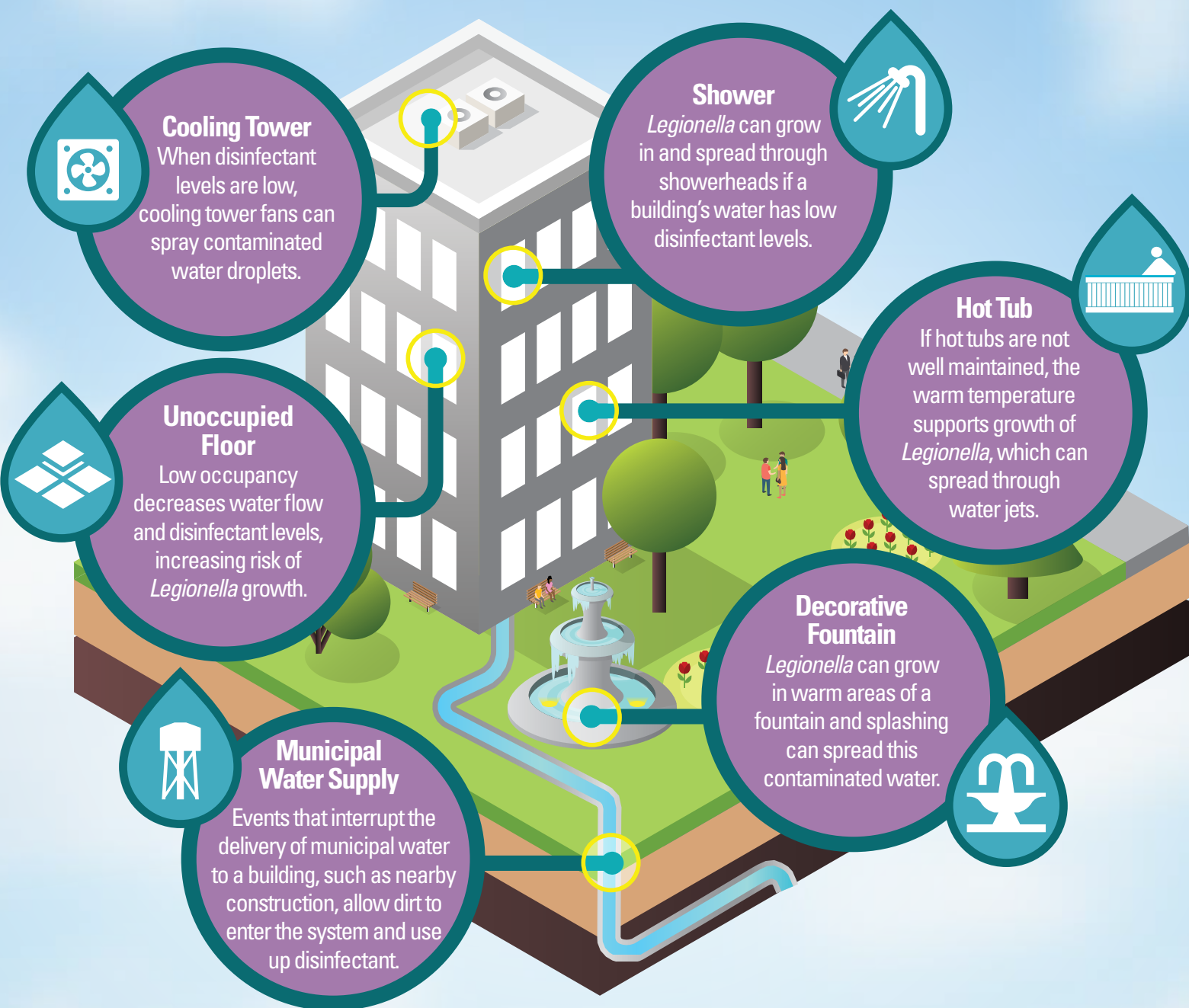


Legionella can grow and spread in many areas of a building.

Effective water management programs can **REDUCE** the risk of Legionnaires' disease.

Legionella can make people sick when the germs grow in water and spread in droplets small enough for people to breathe in.

Legionella grows best in warm water that is not moving or that does not have enough disinfectant to kill germs.



What Can Be Done?

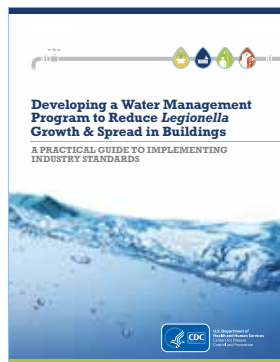


The Federal government is

- Providing tools for building owners and managers to understand how to develop water management programs to reduce the risk of Legionnaires' disease.
- Working with health, academic, and industry partners to develop and evaluate guidelines and standards to prevent Legionnaires' disease.
- Working towards including Legionnaires' disease prevention practices in national building and public health codes.
- Improving health care for veterans by requiring plans for prevention of Legionnaires' disease at Veterans Health Administration hospitals and long-term care facilities.
- Tracking Legionnaires' disease and responding to outbreaks to find the source and help prevent future infections.

Building owners and managers can

- Learn about and follow newly published standards for *Legionella* water management programs. <http://bit.ly/1Ph3wQP>
- Determine if their building water systems are at increased risk of growing and spreading *Legionella*.
- Develop and use a *Legionella* water management program as needed. www.cdc.gov/legionella/WMPtoolkit
- Monitor and respond to changes in water quality.



Practical guide for developing a *Legionella* water management program

www.cdc.gov/legionella/WMPtoolkit

State and local officials can

- Incorporate *Legionella* water management programs into licensing and accreditation requirements for healthcare facilities.
- Consider changing building and public health codes to include *Legionella* water management programs.
- Provide tools and information to help local building owners and managers carry out *Legionella* water management programs.
- Investigate and respond to reports of Legionnaires' disease promptly to prevent more people from getting sick.

Healthcare providers can

- Tell patients if they are at increased risk for pneumonia, including Legionnaires' disease, and to seek care quickly if they develop symptoms of pneumonia.
- Test for Legionnaires' disease in people with serious pneumonia, especially those requiring intensive care or who recently stayed in a healthcare facility or hotel or on a cruise ship. Use a urinary antigen test and a culture from a lower respiratory specimen (e.g., sputum).
- Report positive Legionnaires' disease lab tests to local public health authorities quickly.

1-800-CDC-INFO (232-4636)

TTY: 1-888-232-6348

www.cdc.gov

Centers for Disease Control and Prevention

1600 Clifton Road NE, Atlanta, GA 30329

Publication date: 06/07/2016